

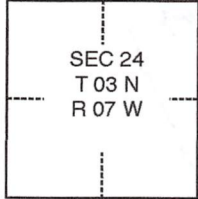
CORNER RECORD

Agency Index 21-067
Document Number 146-052-04 B

City of NOVATO County of MARIN, California
Brief Legal Description FOUND BRASS DISK IN MONUMENT WELL AT C/L X OF INDIAN VALLEY & ARTHUR ST, PER (18 RM 11)

CORNER TYPE

COORDINATES (Optional)



- Government Corner
- Meander
- Rancho
- Control
- Property
- Other

Date of Survey NOVEMBER 2020

N. _____ E. _____
 Elevation _____
 Units Metric U.S. Survey Foot
 Horizontal Datum _____
 Zone _____ Epoch Date _____
 Vertical Datum _____
 Complies with Public Resources Code §§8801-8819
 Complies with Public Resources Code §§8890-8902

- PLS Act Ref.: 8765(d) 8771 8773 Other:
- Corner/Monument: Left as found Established Rebuilt Pre-Construction
 Found and tagged Reestablished Referenced Post-Construction

Narrative of corner identified and monument as found, set, reset, replaced, or removed:
 See sheet #2 for description(s):

FOUND BRASS DISK STAMPED "RCE 11602" IN MONUMENT WELL AT THE INTERSECTION OF THE CENTERLINES OF ARTHUR STREET AND INDIAN VALLEY, PER MAP OF ARROYO AVICHI ESTATES (18 RM 11). SET 4 REFERENCE POINTS AS SHOWN ON PAGE 2. THIS MONUMENT WAS REFERENCED PRIOR TO A CONSTRUCTION PROJECT IN THE VICINITY. THE TIES SHOWN HEREON ARE FOR THE PURPOSE OF PERPETUATION OF FOUND MONUMENT, AND NO CLAIM IS MADE TO ITS RELATIONSHIP TO TRUE BOUNDARY LOCATION.

SURVEYOR'S STATEMENT

This Corner Record was prepared by me or under my direction in conformance with the Professional Land Surveyors' Act on DECEMBER 30, 2020
Signed Rodney D. Unema P.L.S. or R.C.E. No. 9571



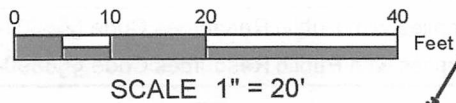
COUNTY SURVEYOR'S STATEMENT

This Corner Record was received 3-2-21
and examined and filed 5-12-21
Signed [Signature] P.L.S. or R.C.E. No. 9292
Title DEPUTY
County Surveyor's Comment _____



LEGEND

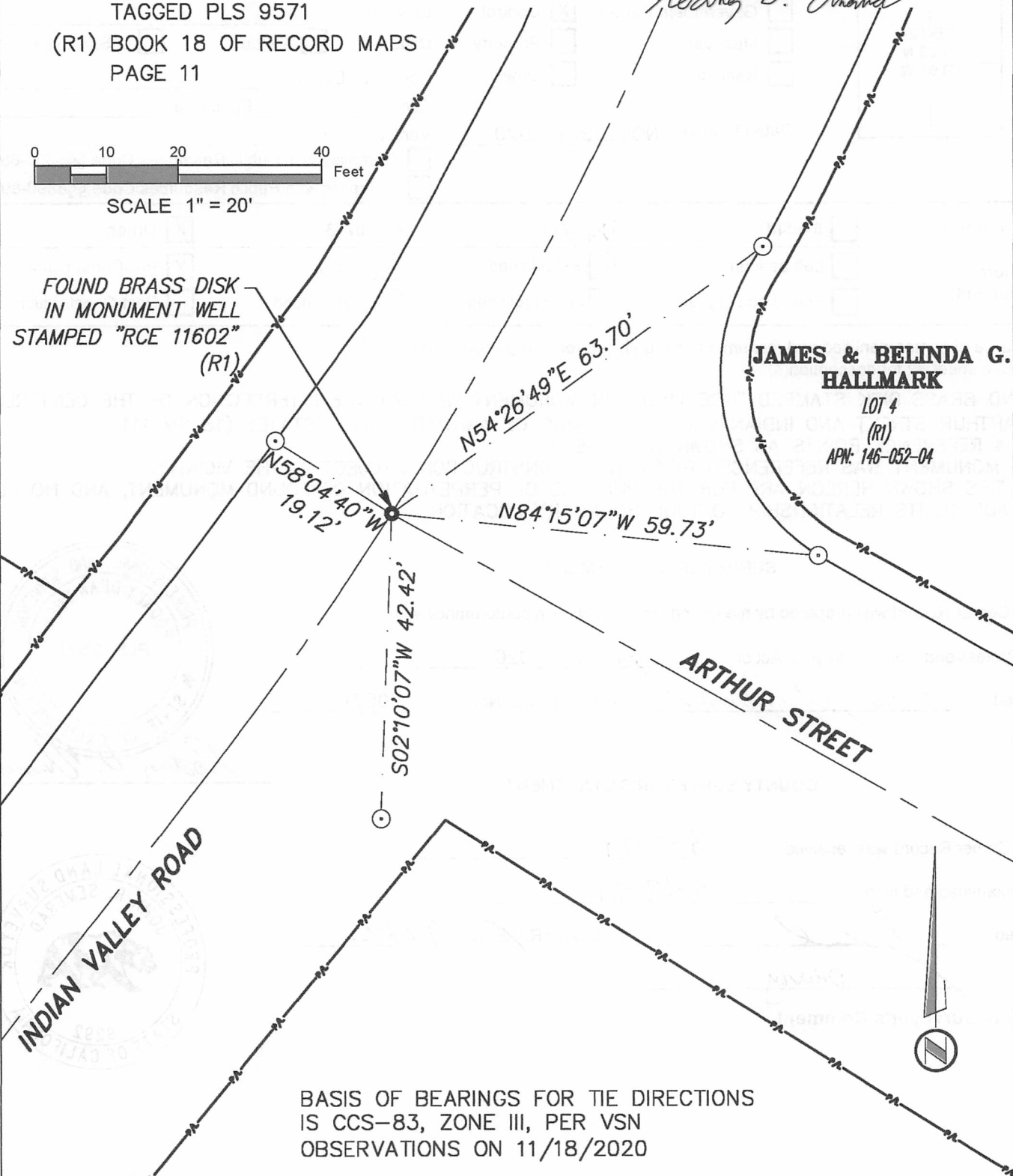
- APPROXIMATE PROPERTY LINE
- APPROXIMATE TOP FACE OF CURB
- - - MONUMENT LINE PER (R1)
- . - SURVEY TIE LINE
- FOUND MONUMENT AS NOTED
- SET NAIL & TAG
TAGGED PLS 9571
- (R1) BOOK 18 OF RECORD MAPS
PAGE 11



Rodney D. Unema

FOUND BRASS DISK
IN MONUMENT WELL
STAMPED "RCE 11602"
(R1)

**JAMES & BELINDA G.
HALLMARK**
LOT 4
(R1)
APN: 146-052-04



BASIS OF BEARINGS FOR TIE DIRECTIONS
IS CCS-83, ZONE III, PER VSN
OBSERVATIONS ON 11/18/2020