

1071

RECEIVED

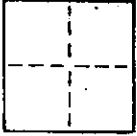
MAY 03 1984

Marin County Public Works

CORNER RECORD

COUNTY OF _____ T. _____ R. _____ MERIDIAN _____ CALIFORNIA _____

CORNER TYPE: GOVT. CORNER MEANDER RANCHO CONTROL OTHER Lot 5/6
 CORNER IDENTIFICATION — DATE OF VISIT _____ 19____ 12 RM 83



A.P. # 176-012-05

CORNER — LEFT AS FOUND FOUND AND TAGGED REESTABLISHED OBLITERATED CORNER REBUILT

PHYSICAL DESCRIPTION OF CORNER FOUND; EVIDENCE AND METHOD USED TO IDENTIFY OR REESTABLISH

Set 2" x 2" Redwood hubs, tagged RCE 17,486 at the North corner of Lot 6 and on the dividing line between Lots 5 and 6, "Map of Marin Highlands Unit 1, Marin County, Calif." filed in Book 12 of Maps at Page 83, Marin County Records

PHYSICAL DESCRIPTION OF MONUMENTS REBUILT OR PERPETUATED

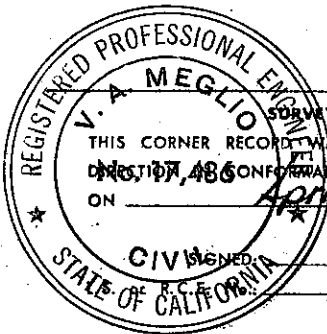
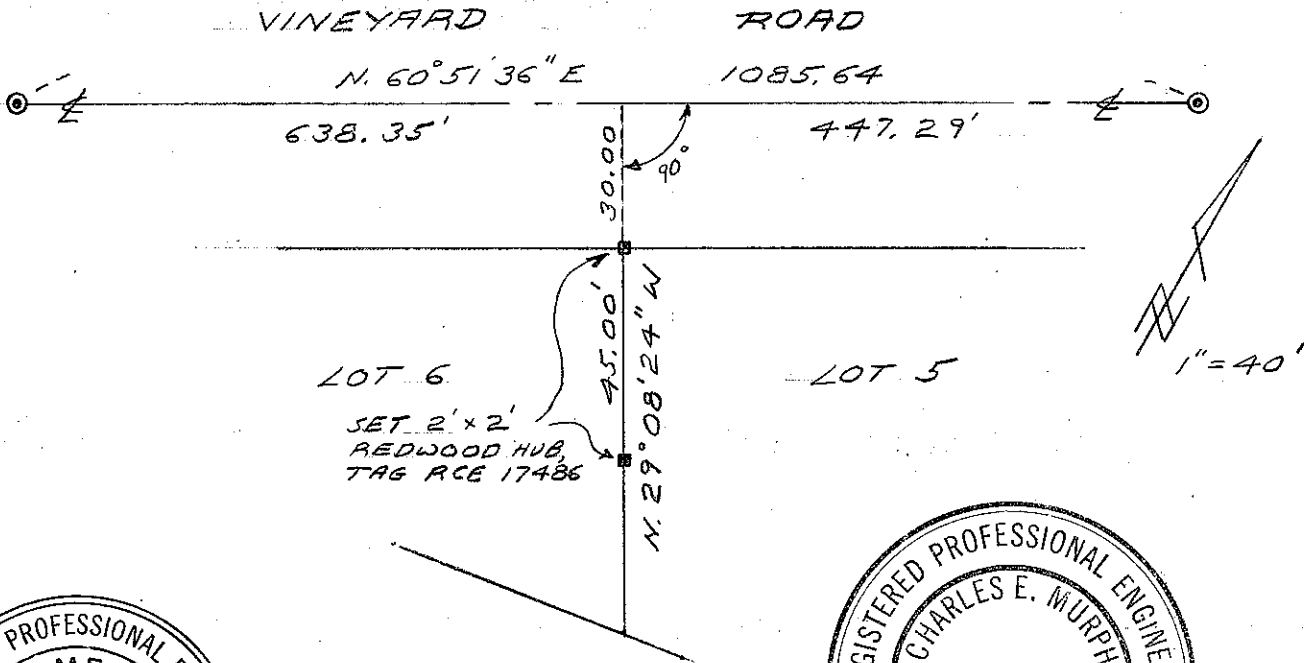
As shown

CALIFORNIA COORDINATE SYSTEM ORDER: FIRST SECOND THIRD

STATIONS USED: NGS (USC & GS) STATE COUNTY OTHER STATION _____ STATION _____

ZONE _____ ELEVATION _____ NORTHINGS (Y) _____ EASTINGS (X) _____

SKETCH: (Include reference tie or witness points, remarks and topo of area)



SURVEYOR'S CERTIFICATE

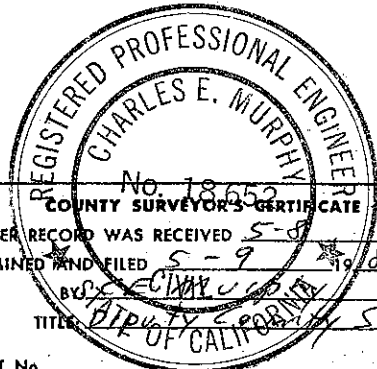
THIS CORNER RECORD WAS PREPARED BY ME OR UNDER MY

NO. 17,486 CONFORMANCE WITH THE LAND SURVEYORS ACT

ON APR 27 1984

SIGNED: V. A. Meglio

C 17486



THE CORNER RECORD WAS RECEIVED 5-8 1984

AND EXAMINED AND FILED 5-9 1984

TITLE: DEPUTY COUNTY Surveyor

DOCUMENT No. _____

STATEMENT ON BACK OF SHEET YES NO