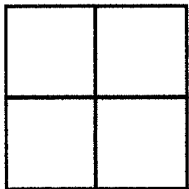


# CORNER RECORD

Agency Index 21-120  
 Document Number 141-201-14  
 County of MARIN, California

City of Novato  
 Brief Legal Description Parcel 1 per 4 RS 70



### CORNER TYPE

Government Corner  Control   
 Meander  Property   
 Rancho  Other

Date of Survey October 19, 2021

### COORDINATES (Optional)

N. \_\_\_\_\_ E. \_\_\_\_\_  
 Elevation \_\_\_\_\_  
 Units Metric  U.S. Survey Foot   
 Horizontal Datum \_\_\_\_\_  
 Zone \_\_\_\_\_ Epoch Date \_\_\_\_\_  
 Vertical Datum \_\_\_\_\_

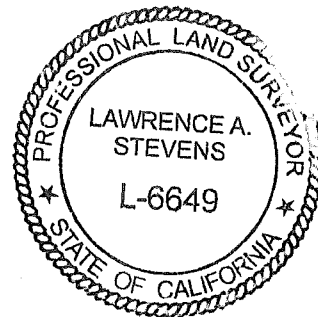
Complies with Public Resources Code §§8801-8819  
 Complies with Public Resources Code §§8890-8902

PLS Act Ref:  8765(d)  8771  8773  Other:  
 Corner/Monument:  Left as found  Established  Rebuilt  Pre-Construction  
 Found and tagged  Reestablished  Referenced  Post-Construction

Narrative of corner identified and monument as found, set, reset, replaced, or removed:  
 See sheet #2 for description (s):

### SURVEYOR'S STATEMENT

This Corner Record was prepared by me or under my direction in conformance with  
 the Professional Land Surveyors' Act on October 25, 2021  
 Signed [Signature] P.L.S. or R.C.E. No. 6649



### COUNTY SURVEYOR'S STATEMENT

This Corner Record was received 10.27.21  
 and examined and filed Nov. 03. 2021  
 Signed [Signature] P.L.S. or R.C.E. No. 9292  
 Title DEPUTY

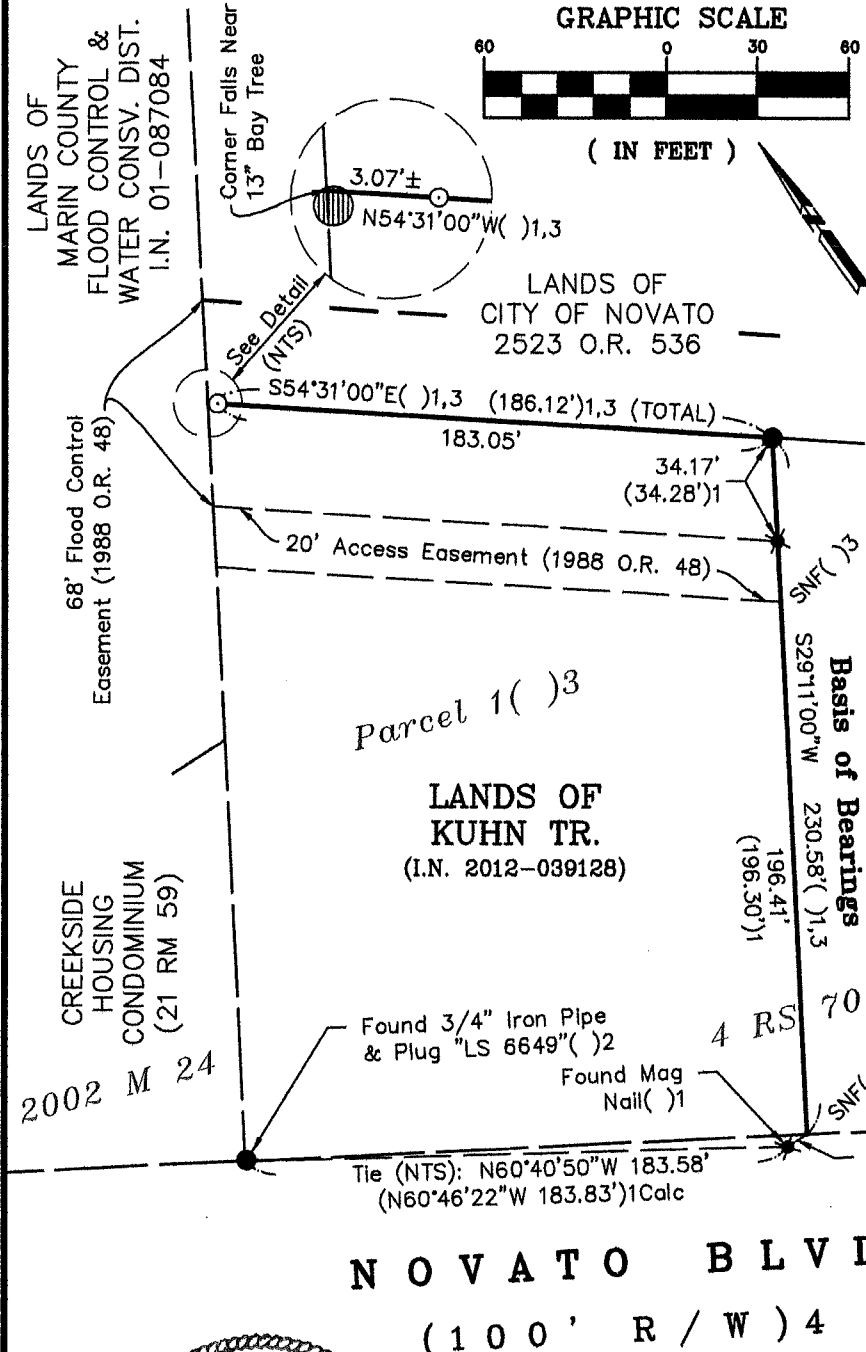
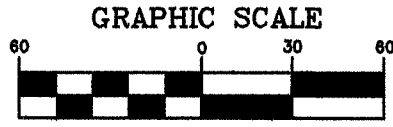


County Surveyor's Comment \_\_\_\_\_  
 \_\_\_\_\_  
 \_\_\_\_\_

All distances shown are in feet and decimals thereof

**LEGEND**

- Found 3/4" Iron Pipe & Plastic Plug, Stamped "Marin County Surveyor" ( ) 1 (UNO)
- ✱ Found Mag Nail & Brass Tag Stamped "Marin County Surveyor" ( ) 1 (UNO)
- Set 5/8" Rebar & 1-1/2" Punched Aluminum Cap, Stamped "LA STEVENS PLS 6649"

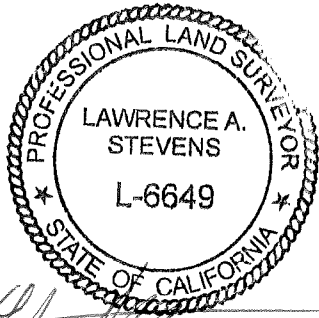


- Calc Calculated Per Record Map
- SNF Searched Area Nothing Found
- UNO Unless Noted Otherwise
- NTS Not To Scale
- O.R. Official Records of Marin County
- ( ) 1 2013 M 30
- ( ) 2 2002 M 24
- ( ) 3 4 RS 70
- ( ) 4 20 RS 68

LANDS OF COUNTY OF MARIN  
2193 O.R. 149

2013 M 30

**NOVATO BLVD.**  
(100' R / W) 4



Lawrence A. Stevens, PLS 6649  
Copyright © Lawrence A. Stevens 2021

**CORNER RECORD  
LANDS OF KUHN TR.**

(NW'y & SE'y Lines of Parcel 1, 4 RS 70)  
CITY OF NOVATO

MARIN COUNTY CALIFORNIA  
SCALE: 1" = 60' October 25, 2021  
**L.A. Stevens & Associates, Inc.**  
Professional Land Surveyors \* (415) 382-7713  
7 Commercial Blvd., Suite 1 \* Novato, CA 94949

Job # 212163