

L. A. Stevens & Associates, Inc.
Professional Land Surveyors
Novato, California

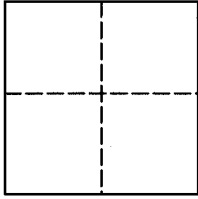
Lands of Fonzo
Job #: 14-1598

CORNER RECORD

Document Number 141-181-14

City of Novato, County of Marin, California

Brief Legal Description: Being the southwesterly line of Lot 13 as shown on that certain map entitled, "Map of M & S Seventh Street Subdivision" filed in Volume 9 of Maps, at page 22, Marin County Records.



CORNER TYPE

COORDINATES (Optional)

Government Corner Control
Meander Property
Rancho Other
Date of Survey August 4, 2014

N _____
E _____
Zone _____ NAD27 NAD83
NAD 83 Epoch _____
Elev. _____
Vert. Datum: NGVD29 NAVD88
Meas. Units: Metric Imperial

Corner - Left as found Found and tagged Established Reestablished Rebuilt

Identification and type of corner found: Evidence used to identify or procedure used to establish or reestablish the corner:
See Page 2 of 2 for additional information

A description of the physical condition of the monument as found and as set or reset:
See Page 2 of 2 for additional information

SURVEYOR'S STATEMENT

This Corner Record was prepared by me or under my direction in conformance with
The Land Surveyor's Act on August 07, 2014.

Signed [Signature] P.L.S. 6649



COUNTY SURVEYOR'S STATEMENT

This Corner Record was received 08/12/2014

and examined and filed SEPTEMBER 2, 2014

Signed [Signature] P.L.S. or R.C.E. No. 7821

Title DEPUTY



County Surveyors' Comment _____

All distances shown are in feet and decimals thereof

LEGEND

⊙ Found Pin in Standard Concrete Well Casing per 9 RM 22

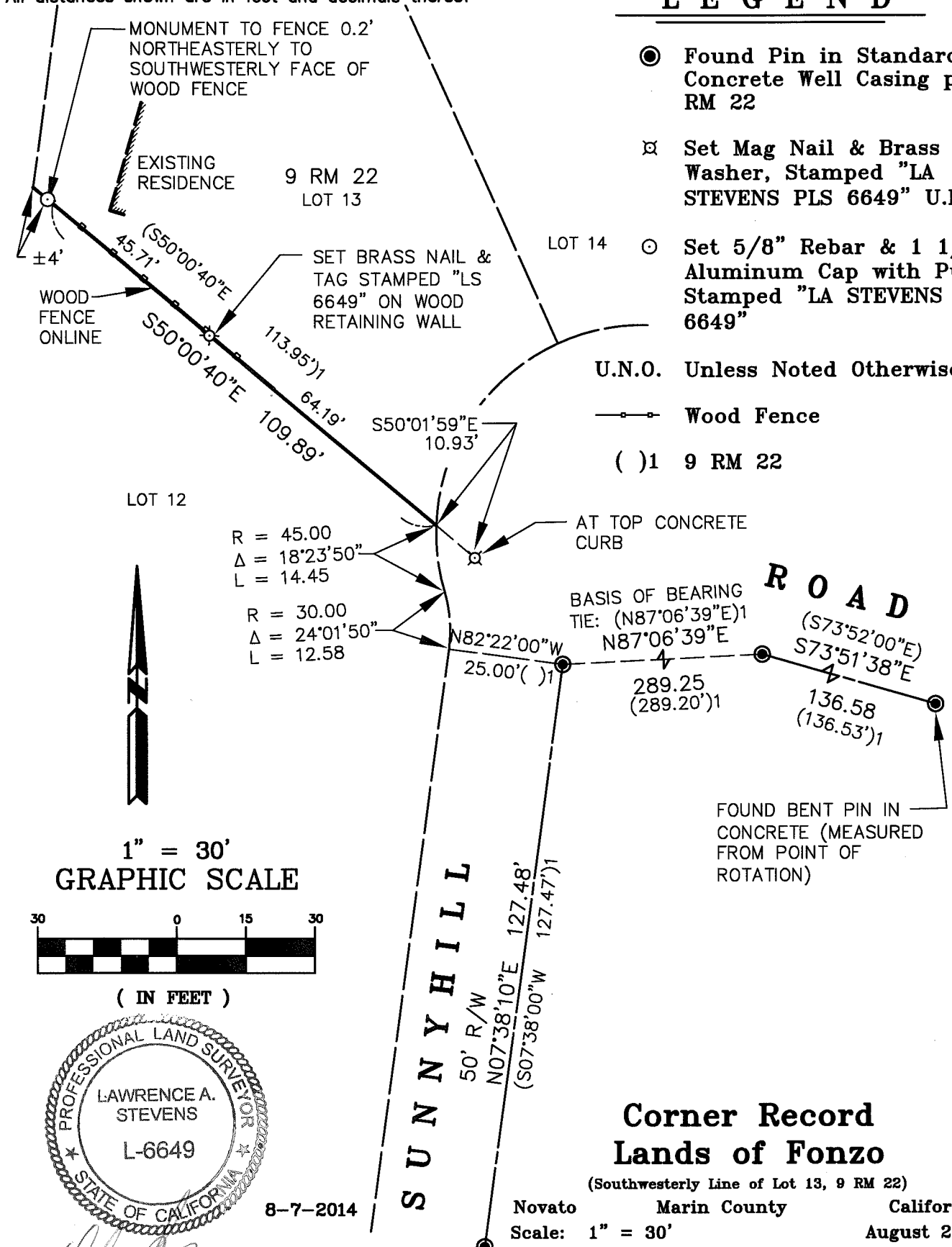
⊠ Set Mag Nail & Brass Washer, Stamped "LA STEVENS PLS 6649" U.N.O.

○ Set 5/8" Rebar & 1 1/2" Aluminum Cap with Punch, Stamped "LA STEVENS PLS 6649"

U.N.O. Unless Noted Otherwise

—|— Wood Fence

() 1 9 RM 22



Corner Record Lands of Fonzo

(Southwesterly Line of Lot 13, 9 RM 22)

Novato Marin County California
Scale: 1" = 30' August 2014

L.A. Stevens & Associates, Inc.

Professional Land Surveyors * (415) 382-7713
7 Commercial Blvd., Suite 1 * Novato, CA 94949