

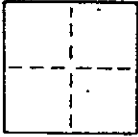
CORNER RECORD

SHT. 1 of 2

COUNTY OF MARIN T. \_\_\_\_\_ R. \_\_\_\_\_ MERIDIAN \_\_\_\_\_ CALIFORNIA

CORNER TYPE: GOVT. CORNER  MEANDER  RANCHO  CONTROL  OTHER

CORNER IDENTIFICATION — DATE OF VISIT \_\_\_\_\_ 19\_\_\_\_



N/A

CORNER — LEFT AS FOUND  FOUND AND TAGGED  REESTABLISHED OBLITERATED CORNER  REBUILT

PHYSICAL DESCRIPTION OF CORNER FOUND; EVIDENCE AND METHOD USED TO IDENTIFY OR REESTABLISH

N/A

PHYSICAL DESCRIPTION OF MONUMENTS REBUILT OR PERPETUATED

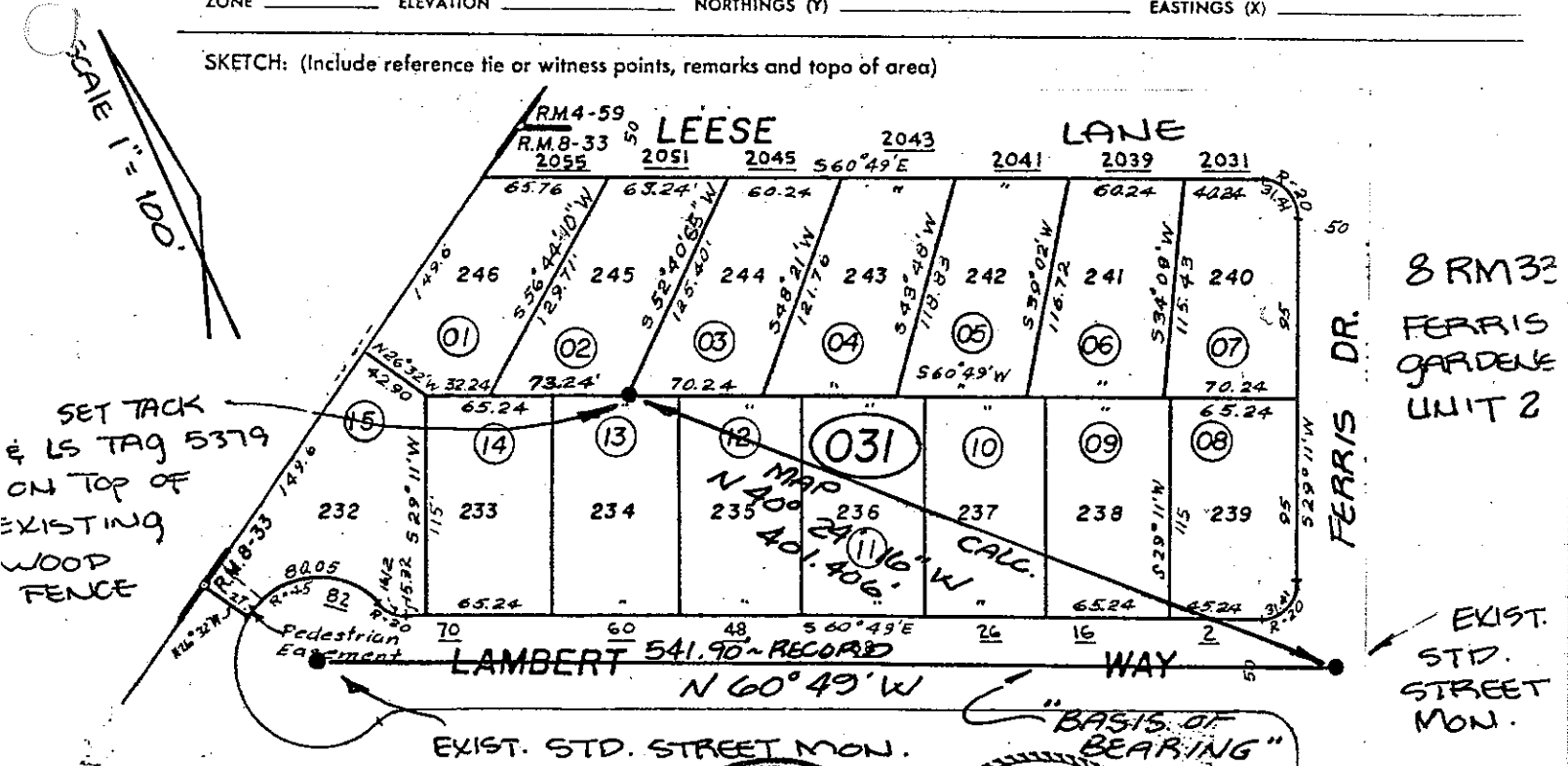
SET TACK & LS TAG 5379 ON TOP OF EXISTING 6' HIGH WOOD FENCE AT THE SE CORNER OF LOT 245 OF THE MAP OF FERRIS GARDENS (8 RM 33) BEING AP# 141-031-02 ~ 2051 LEESE LANE, NOVATO, CA

CALIFORNIA COORDINATE SYSTEM ORDER: FIRST  N/A SECOND  THIRD

STATIONS USED: NGS (USC & GS)  STATE  COUNTY  OTHER  STATION \_\_\_\_\_ STATION \_\_\_\_\_

ZONE \_\_\_\_\_ ELEVATION \_\_\_\_\_ NORTHINGS (Y) \_\_\_\_\_ EASTINGS (X) \_\_\_\_\_

SKETCH: (Include reference tie or witness points, remarks and topo of area)



8 RM 33  
FERRIS GARDENS  
UNIT 2

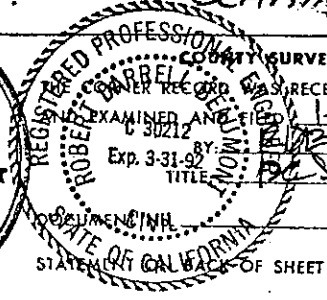
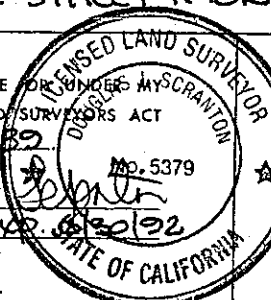
EXIST. STD. STREET MON.

SURVEYOR'S CERTIFICATE

THIS CORNER RECORD WAS PREPARED BY ME OR UNDER MY SUPERVISION  
 DIRECTION IN CONFORMANCE WITH THE LAND SURVEYORS ACT  
 ON JANUARY 10th 1989

SIGNED: \_\_\_\_\_

L.S. or R.C.E. No.: LS 5379



COUNTY SURVEYOR'S CERTIFICATE

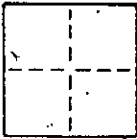
RECORDED AND EXAMINED AND FILED IN BOOK \_\_\_\_\_ PAGE \_\_\_\_\_  
 Exp. 3-31-92  
 TITLE \_\_\_\_\_

SEAL

YES  NO

# CORNER RECORD

COUNTY OF MABIN T. \_\_\_\_\_ R. \_\_\_\_\_ MERIDIAN \_\_\_\_\_ CALIFORNIA  
 CORNER TYPE: GOVT. CORNER  MEANDER  RANCHO  CONTROL  OTHER   
 CORNER IDENTIFICATION — DATE OF VISIT \_\_\_\_\_ 19\_\_\_\_



N/A

CORNER — LEFT AS FOUND  FOUND AND TAGGED  REESTABLISHED OBLITERATED CORNER  REBUILT

PHYSICAL DESCRIPTION OF CORNER FOUND; EVIDENCE AND METHOD USED TO IDENTIFY OR REESTABLISH

N/A

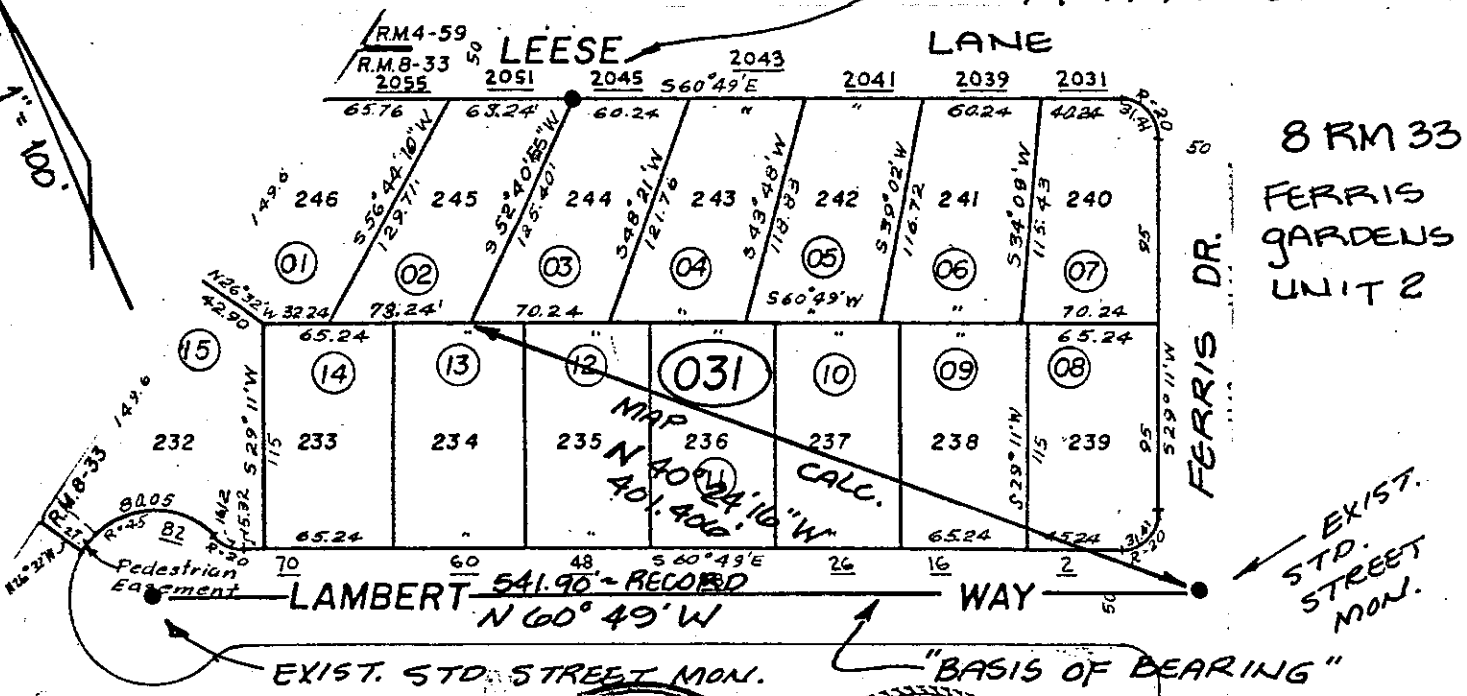
PHYSICAL DESCRIPTION OF MONUMENTS REBUILT OR PERPETUATED

SET 3/4" IRON PIPE/LS TAG 5379 AT THE NE CORNER OF LOT 245 OF THE MAP OF FERRIS GARDENS, UNIT 2 (8 RM 33) BEING AP # 141-031-02 ~ 2051 LEESE LANE NOVATO, CA.

CALIFORNIA COORDINATE SYSTEM ORDER: FIRST  N/A SECOND  THIRD   
 STATIONS USED: NGS (USC & GS)  STATE  COUNTY  OTHER  STATION \_\_\_\_\_ STATION \_\_\_\_\_  
 ZONE \_\_\_\_\_ ELEVATION \_\_\_\_\_ NORTHINGS (Y) \_\_\_\_\_ EASTINGS (X) \_\_\_\_\_

SKETCH: (Include reference tie or witness points, remarks and topo of area)

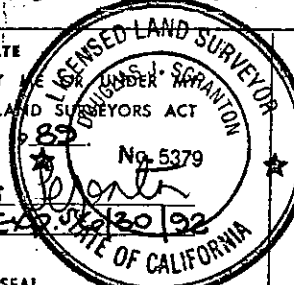
SET 3/4" I.P. /LS 5379



**SURVEYOR'S CERTIFICATE**

THIS CORNER RECORD WAS PREPARED BY DAVID J. SPANION IN THE DIRECTION IN CONFORMANCE WITH THE LAND SURVEYORS ACT ON JANUARY 10<sup>th</sup> 1989

SIGNED: David J. Spanion No. 5379  
 L.S. or R.C.E. No.: LS 5379 Exp. 3-31-92



**COUNTY SURVEYOR'S CERTIFICATE**

THIS CORNER RECORD WAS RECEIVED 1-18 1989  
 EXAMINED AND FILED 1-18 1989  
 COUNTY CLERK  
 COUNTY OF MABIN  
 DOCUMENT No. \_\_\_\_\_  
 STATE OF CALIFORNIA

SEAL

YES  NO