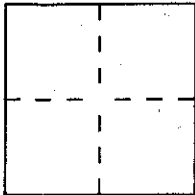


CORNER RECORD

Document Number APN 141-031-02

City of Novato County of Marin, California
Brief Legal Description Lot 245 Ferris Gardens, Unit 2, 8 RM 33



CORNER TYPE

Government Corner Control
Meander Property
Rancho Other
Date of Survey July 1, 1998

COORDINATES (Optional)

N. _____
E. _____
Zone _____ Datum _____
Elev. _____

Corner — Left as found Found and tagged Established Reestablished Rebuilt

Identification and type of corner found: Evidence used to identify or procedure used to establish or reestablish the corner:

Reestablish the Northwesterly, Southwesterly, and Southeasterly corner
of Lot 245 of the Map of Ferris Gardens, Unit 2, 8 RM 33 from
existing standard street monuments on Lambert Way as depicted upon
said Map of Record. Refer to sketch on reverse side for details.

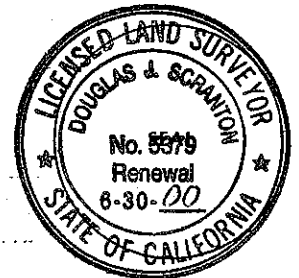
A description of the physical condition of the monument as found and as set or reset:

Northwesterly corner- set 1/2 inch rebar with PLS cap 5379 affixed
to the top and driven approximately flush with ground grade
Southwesterly corner- set brass nail with tag LS 5379 in fence rail
Southeasterly corner-set lead plug and tag LS 5379 in concrete

SURVEYOR'S STATEMENT

This Corner Record was prepared by me or under my direction in conformance with
the Land Surveyors' Act on July 2 19 98.

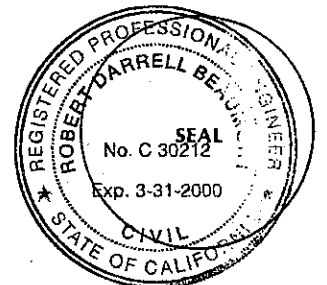
Signed [Signature] L.S. or R.C.E. Number PLS 5379
renewal 6/30/00



COUNTY SURVEYOR'S STATEMENT

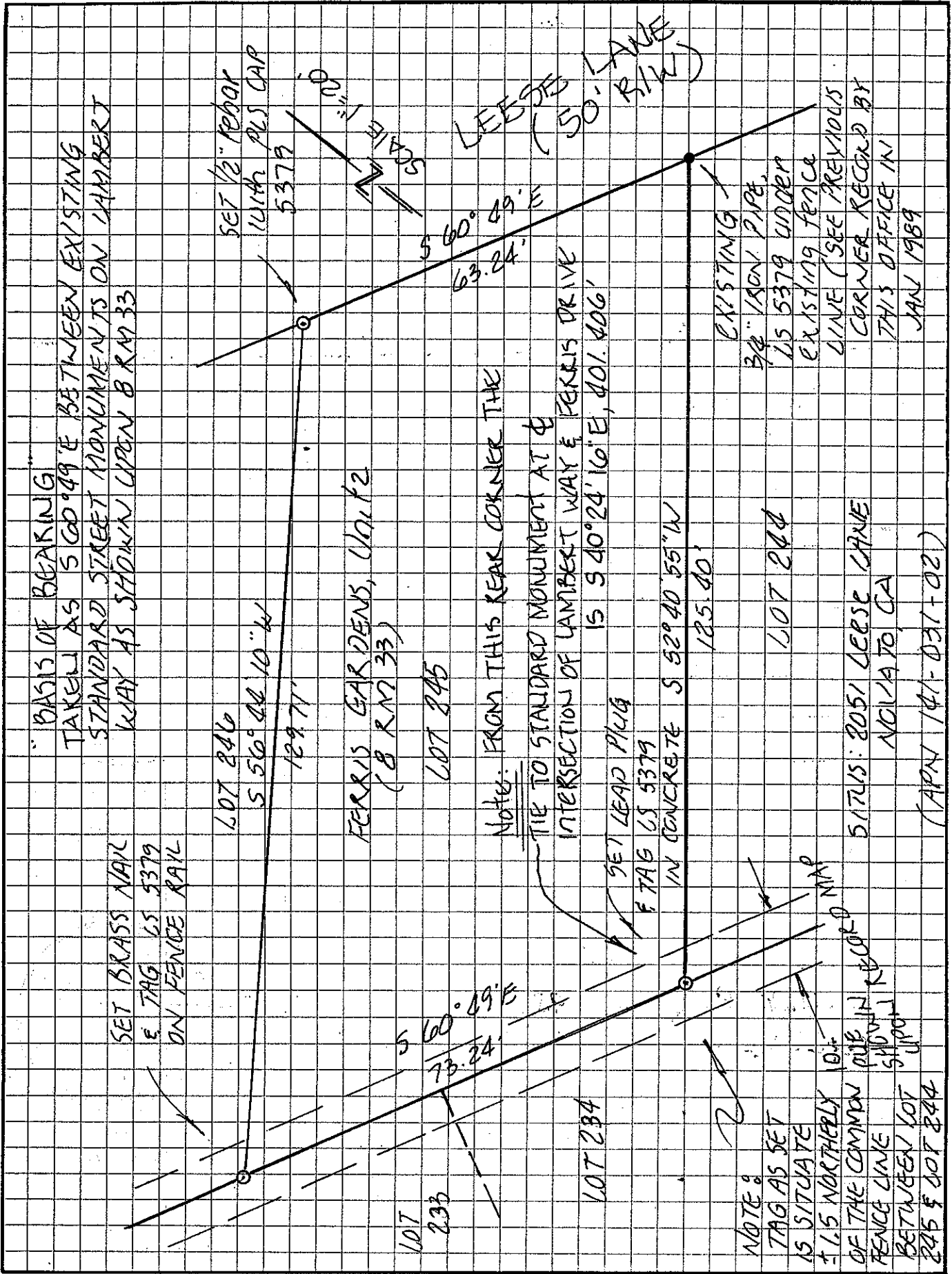
This Corner Record was received JULY 8 19 98 and examined
and filed JULY 9 19 98.

Signed [Signature] Title DEPUTY



County Surveyor's Comment _____

PREPARED BY: DJ SCRANTON SURVEYING 845 OLIVE AVE. NOVATO, CA 94945



"BASIS OF BEARING"

TAKEN AS S 60° 49' E BETWEEN EXISTING STANDARD STREET MONUMENTS ON LAMBERT WAY AS SHOWN UPON B R M 33

SET BRASS NAIL
E TAG LS 5379
ON FENCE RAIL

LOT 246
S 56° 04' 10" W
129.71'

FERRIS GARDENS, UNIT 2
(8 RM 33)

LOT 245

NOTE: FROM THIS REAR CORNER THE

TIE TO STANDARD MONUMENT AT

INTERSECTION OF LAMBERT WAY & FERRIS DRIVE

IS S 40° 24' 10" E, 401.406'

SET LEAD PLUG
E TAG LS 5379

IN CONCRETE S 52° 40' 55" W
125.40'

S 60° 49' E
73.24'

LOT 234

NOTE:

TAG AS SET IS SITUATE

± 1.5 NORTHERLY OF THE COMMON FENCE LINE BETWEEN LOT 245 & LOT 244

SHOWN IN RECORD MAP

SITUS: 8051 LEESE CANE
NOVATO, CA

(APN 141-031-02)

EXISTING

3/4" IRON PIPE,

LS 5379 UNDER

EXISTING FENCE

LINE (SEE PREVIOUS

CORNER RECORD BY

THIS OFFICE IN

JAN 1989

LEESE (50' LAVER R/W)

SCALE 1" = 20'

SET 1/2" IRON NAIL
WITH PLS CAP
5379

S 60° 49' E
63.24'

63.24'

63.24'

63.24'

63.24'

63.24'

63.24'

63.24'

63.24'

63.24'

63.24'

63.24'

63.24'

63.24'

63.24'

63.24'

63.24'

63.24'

63.24'

63.24'

63.24'

63.24'

63.24'

63.24'

63.24'