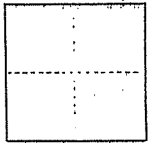


CORNER RECORD

COUNTY OF Marin T. _____ R. _____ MERIDIAN CALIFORNIA

CORNER TYPE: GOV'T. CORNER MEANDER RANCHO CONTROL OTHER Lot 231, Bk 8 Maps, P 3:
CORNER IDENTIFICATION — DATE OF VISIT April 18, 1979



A.P. # 171-022-01

CORNER — LEFT AS FOUND FOUND AND TAGGED REESTABLISHED OBLITERATED CORNER REBUILT

PHYSICAL DESCRIPTION OF CORNER FOUND; EVIDENCE AND METHOD USED TO IDENTIFY OR REESTABLISH

Set 1/2" x 30" iron pipe and tag L S 4483 on the Northwesterly property line and at the Northeasterly corner of Lot 231 in the position shown on that " Map of Ferris Gardens Unit #2 " filed in Book 8 of Maps, Page 33, Marin County Records..

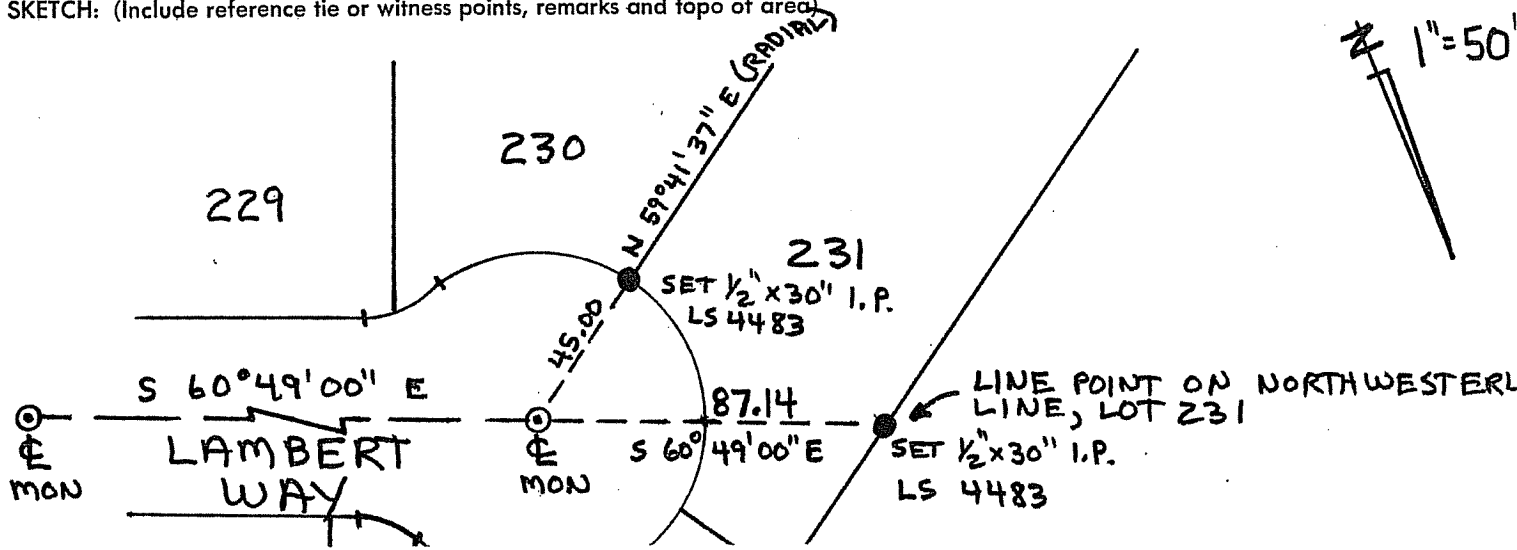
PHYSICAL DESCRIPTION OF MONUMENTS REBUILT OR PERPETUATED

As shown hereon.

CALIFORNIA COORDINATE SYSTEM ORDER: FIRST SECOND THIRD
STATIONS USED: NGS (USC & GS) STATE COUNTY OTHER STATION _____ STATION _____
ZONE _____ ELEVATION _____ NORTHINGS (Y) _____ EASTINGS (X) _____

(Fold)

SKETCH: (Include reference tie or witness points, remarks and topo of area)



233

232

SURVEYOR'S CERTIFICATE

THIS CORNER RECORD WAS PREPARED BY ME OR UNDER MY DIRECTION IN CONFORMANCE WITH THE LAND SURVEYORS ACT ON 25 April 1979.

SIGNED: Fred M. Phelps

L.S. or R.C.E. No.: LS 4483



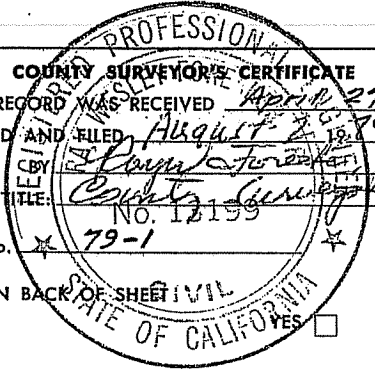
COUNTY SURVEYOR'S CERTIFICATE

THE CORNER RECORD WAS RECEIVED April 27 1979 AND EXAMINED AND FILED August 2, 1979

BY County Clerk
TITLE: No. 12159

DOCUMENT No. 79-1

STATEMENT ON BACK OF SHEET VIL YES NO



A CORNER RECORD IS TO BE USED TO PERPETUATE MONUMENTS ONLY

The following are the Board's instructions:

1. This Corner Record is to be prepared by a licensed land surveyor or registered civil engineer and filed with the County Surveyor (or County Engineer) in the county in which the corner is located.
2. A Corner Record shall be filed within 90 days when a corner or corner accessory originally established by official public land surveys of the United States Government has been found remonumented (reestablished—as an obliterated corner), witnessed or used in a survey.
3. The County Surveyor shall examine the Corner Record within 20 days. He shall examine it for conformance with Section 8766, subsection b and c. He shall then file and index this Corner Record after:
 1. He finds that the information is complete.
 2. He finds a disagreement with other record and he has noted the disagreement on the reverse side of the Corner Record.

He shall notify the surveyor of his action.

4. At the option of the licensed land surveyor or registered civil engineer, a Corner Record may be filed for any property corner, property controlling corner, reference monument, or accessory to a property corner, when none of the conditions requiring a record of survey is required as outlined in Section 8762.
5. Corner identification should be by the Bureau of Land Management marking system, as outlined in the "Manual of Surveying Instructions" (Sections 4-23 through 4-45 in the 1973 manual). (Sections 259 through 280 in the 1947 manual)
6. Perpetuation of monument to be filed on a Corner Record form shall be those monuments set to replace existing or obliterated corners as identified in Sections 348 through 358 of the "Manual of Surveying Instruction, 1947" or Sections 5-4 through 5-19 of the "Manual of Surveying Instruction, 1973". The location and restoration of lost corners shall be shown on a record of survey in accordance with Section 8764.
7. California Coordinate System data may be included only when readily available.
8. A sketch showing reference ties to identifiable objects in the vicinity of the corner shall be provided when appropriate. Photographs or topo of the monument and general area, etc., are also encouraged.
9. Only one corner shall be included on each Corner Record. Accessories to a corner, may be included on the Corner Record for the subject corner.
10. A Corner Record is not required but may be filed to show its physical condition when: a) a Corner Record is on file and the corner is found as described in the existing Corner Record filed; b) all conditions of the statutes are complied with by proper notation on a record of survey map, subdivision map or parcel map filed after January 1, 1974.