

# CORNER RECORD

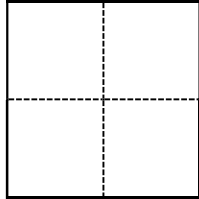
Agency Index DPW 21-005

Document Number APN 141-021-47

City of unincorporated County of Marin, California

Brief Legal Description South line of the lands of Andruas as shown on that Record of Survey 2018 Maps 2, Marin County Records.

### CORNER TYPE



- Government Corner     Control  
 Meander                     Property  
 Rancho                          Other

Date of Survey October 16, 2020

### COORDINATES (Optional)

N. \_\_\_\_\_ E. \_\_\_\_\_

Elevation \_\_\_\_\_

Units     Metric                     U.S. Survey Foot

Horizontal Datum \_\_\_\_\_

Zone \_\_\_\_\_ Epoch Date \_\_\_\_\_

Vertical Datum \_\_\_\_\_

Complies with Public Resources Code §§8801-8819

Complies with Public Resources Code §§8890-8902

PLS Act Ref.:     8765(d)                     8771                     8773                     Other:

Corner/  
Monument:     Left as found                     Established                     Rebuilt                     Pre-Construction

Found and tagged                     Reestablished                     Referenced                     Post-Construction

Narrative of corner identified and monument as found, set, reset, replaced, or removed:

See sheet #2 for description(s):

Found monumentation as shown on Record of Survey, 2018 Maps 2, Marin County Records. Set 5/8" rebar tagged LS 4483, as shown on sheet 2.

### SURVEYOR'S STATEMENT

This Corner Record was prepared by me or under my direction in conformance with the Professional Land Surveyors' Act on September 16, 2021.

Signed Fred M. Phelps P.L.S. or R.C.E. No. LS 4483



### COUNTY SURVEYOR'S STATEMENT

This Corner Record was received December 23, 2021

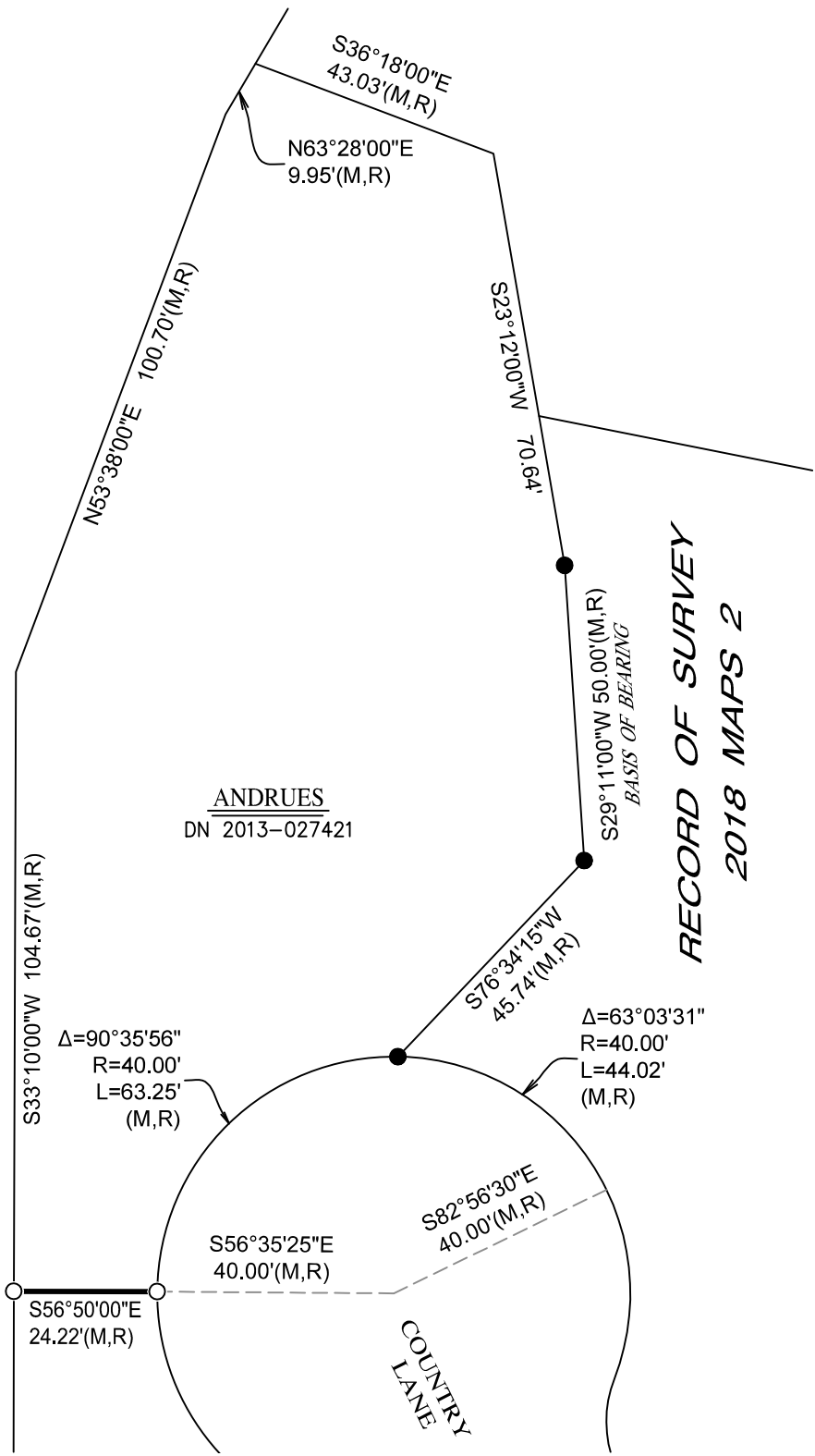
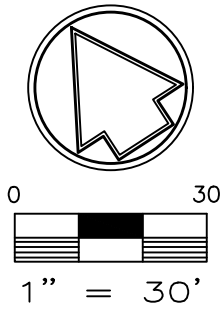
and examined and filed December 23, 2021.

Signed T. L. Park P.L.S. [Redacted] No. 8176

Title County Surveyor

County Surveyor's Comment





**Legend**

- = 5/8" rebar set (tagged LS 4483)
- = 3/4" iron pipe found (tagged RCE 18221)
- R = Record of Survey / 2018 Maps 2
- M = Measured