

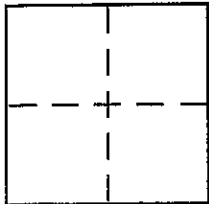
**CORNER RECORD**

Document Number AP 140-331-10

City of NOVATO

County of MARIN, California

Brief Legal Description Northwesterly Property Line Lot 10, 16 RM 47



**CORNER TYPE**

Government Corner  Control   
Meander  Property   
Rancho  Other   
Date of Survey August 21, 1999

**COORDINATES (Optional)**

N. \_\_\_\_\_  
E. \_\_\_\_\_  
Zone \_\_\_\_\_ NAD27  NAD83   
NAD83 Epoch \_\_\_\_\_  
Elev. \_\_\_\_\_  
Vert. Datum: NGVD29  NAVD88   
Meas. Units: Metric  Imperial

Corner - Left as found  Found and tagged  Established  Reestablished  Rebuilt

Identification and type of corner found: Evidence used to identify or procedure used to establish or reestablish the corner:

See "PLAT OF CORNER RECORD" Page 2 of 2.

A description of the physical condition of the monument as found and as set or reset:

See "Plat Of Corner Record" Page 2 of 2.

**SURVEYOR'S STATEMENT**

This Corner Record was prepared by me or under my direction in conformance with

the Land Surveyor's Act on August 30, 1999

Signed [Signature] P.L.S. ~~No.~~ No. 6649



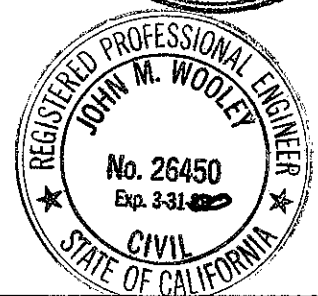
**COUNTY SURVEYOR'S STATEMENT**

This Corner Record was received 10-6-99

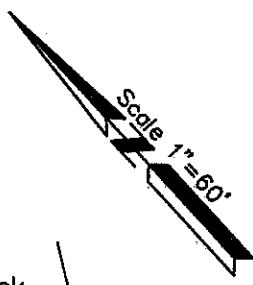
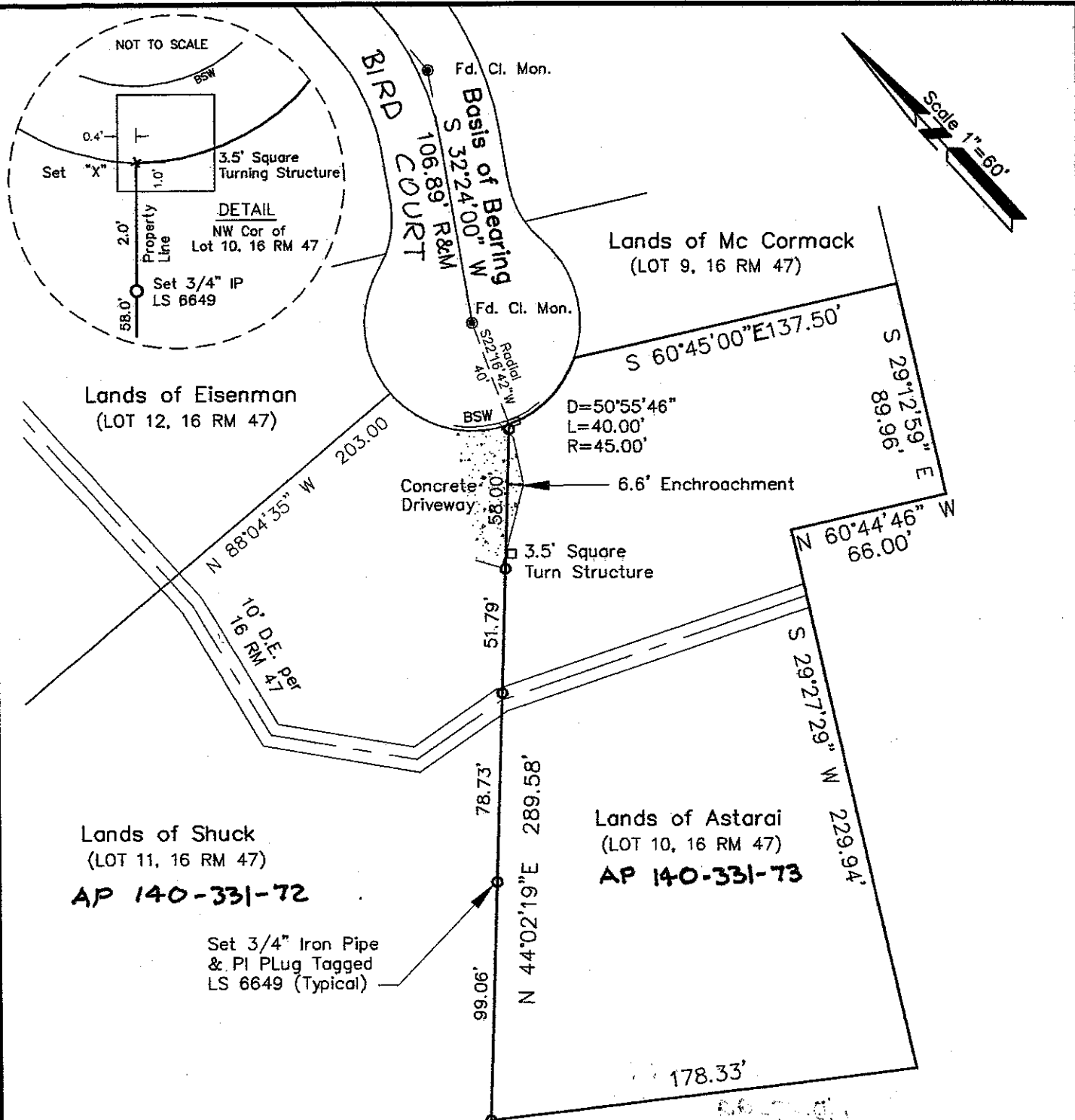
and examined and filed 10-7-99

Signed [Signature] P.L.S. or R.C.E. No. 26450

Title DEPUTY



County Surveyor's Comment \_\_\_\_\_



**Plat of Corner Record  
Common Property Line  
Lands of Astarai & Shuck**

(Lot 10 & 11, 16 RM 47)  
Marin County California  
August 1999



**L.A. Stevens & Associates**

Professional Land Surveyors \* (415) 382-8321  
1132 Bel Marin Keys Blvd. \* Novato, CA 94947

Lawrence A. Stevens, PLS 6649  
License expires 12/31/99

Drawing No. 99314Fld.dwg

Page 2 Of 2