

CORNER RECORD

Assessor's Parcels No. 140-272-09 & 10

City of Novato County of Marin California
Brief Legal Description: Lots 17 and 18, 6 RM 64, Marin County Records

CORNER TYPE

Lots in an Existing Subdivision

COORDINATES
(Optional)

None

Corners:

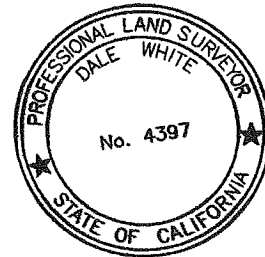
Re-established corners based on street monuments and Amended Map of Pleasant View (6 RM 64).
Set property corner monuments as shown on Page 2 this Corner Record.

Description of Monuments reset:

See Page 2 of this Corner Record for descriptions of all monuments found and set.

SURVEYOR'S STATEMENT

This Corner Record was prepared by me or under my direction in conformance with the Land Surveyor's Act on June 14, 2016.

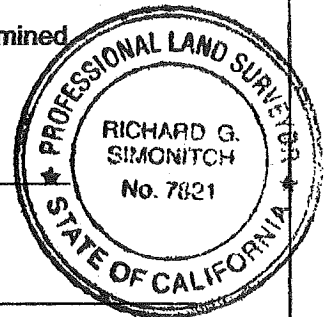


Signed Dale White LS 4397

COUNTY SURVEYOR'S STATEMENT

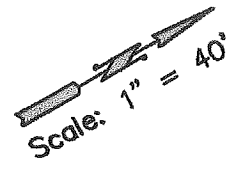
This Corner Record was received JUNE 21, 20 16, and examined
and filed SEPTEMBER 23, 20 16.

Signed Richard G. Simonitch Title County Surveyor

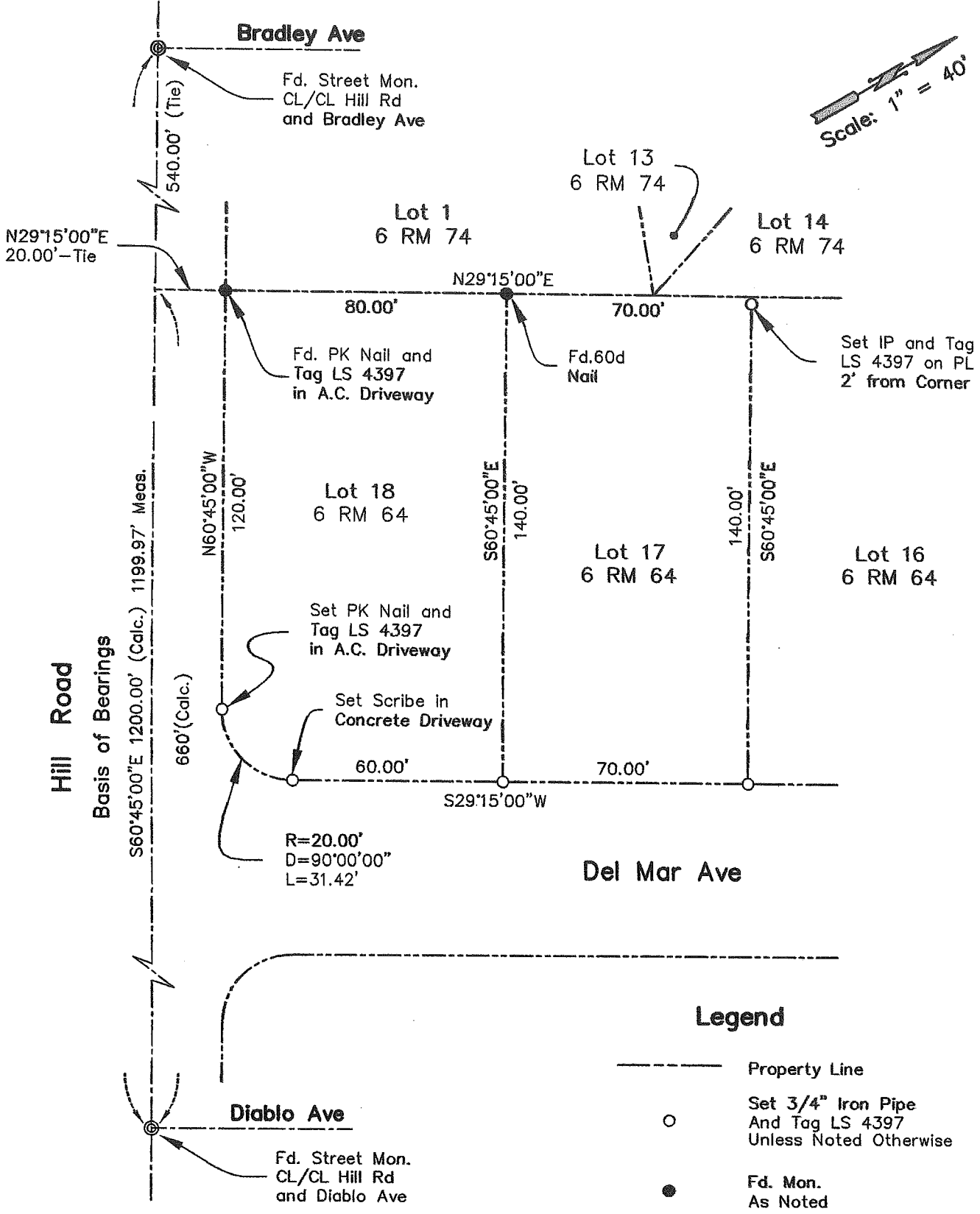


County Surveyor's Comments _____

Corner Record



Hill Road
 Basis of Bearings



Legend

- Property Line
- Set 3/4" Iron Pipe And Tag LS 4397 Unless Noted Otherwise
- Fd. Mon. As Noted

701 and 703 Del Mar Ave
 Novato, CA
 APN 140-272-09 & 10

Corner Record

Property Survey
 Lots 17 and 18, 6 RM 64
 Marin County Records

D:\LDT2016\Jackson Corner Record\
 dwg\Corner-pg-2.dwg