

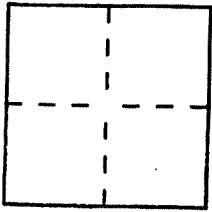
# CORNER RECORD

Document Number APN 140-171-88

City of NOVATO

County of MARIN, California

Brief Legal Description LOT 6, "RECORD OF SURVEY..." 2/RS/163



### CORNER TYPE

Government Corner  Control   
Meander  Property   
Rancho  Other   
Date of Survey \_\_\_\_\_

### COORDINATES (Optional)

N. \_\_\_\_\_  
E. \_\_\_\_\_  
Zone \_\_\_\_\_ Datum \_\_\_\_\_  
Elev. \_\_\_\_\_

Corner Left as found  Found and tagged  Established  Reestablished  Rebuilt

Identification and type of corner found: Evidence used to identify or procedure used to establish or reestablish the corner:

SEE PAGE 2

A description of the physical condition of the monument as found and as set or reset:

SEE PAGE 2

### SURVEYOR'S STATEMENT

This Corner Record was prepared by me or under my direction in conformance with the Land Surveyors' Act on APRIL 11 2000 19.

Signed [Signature] L.S. or R.C.E. Number PLS 6784



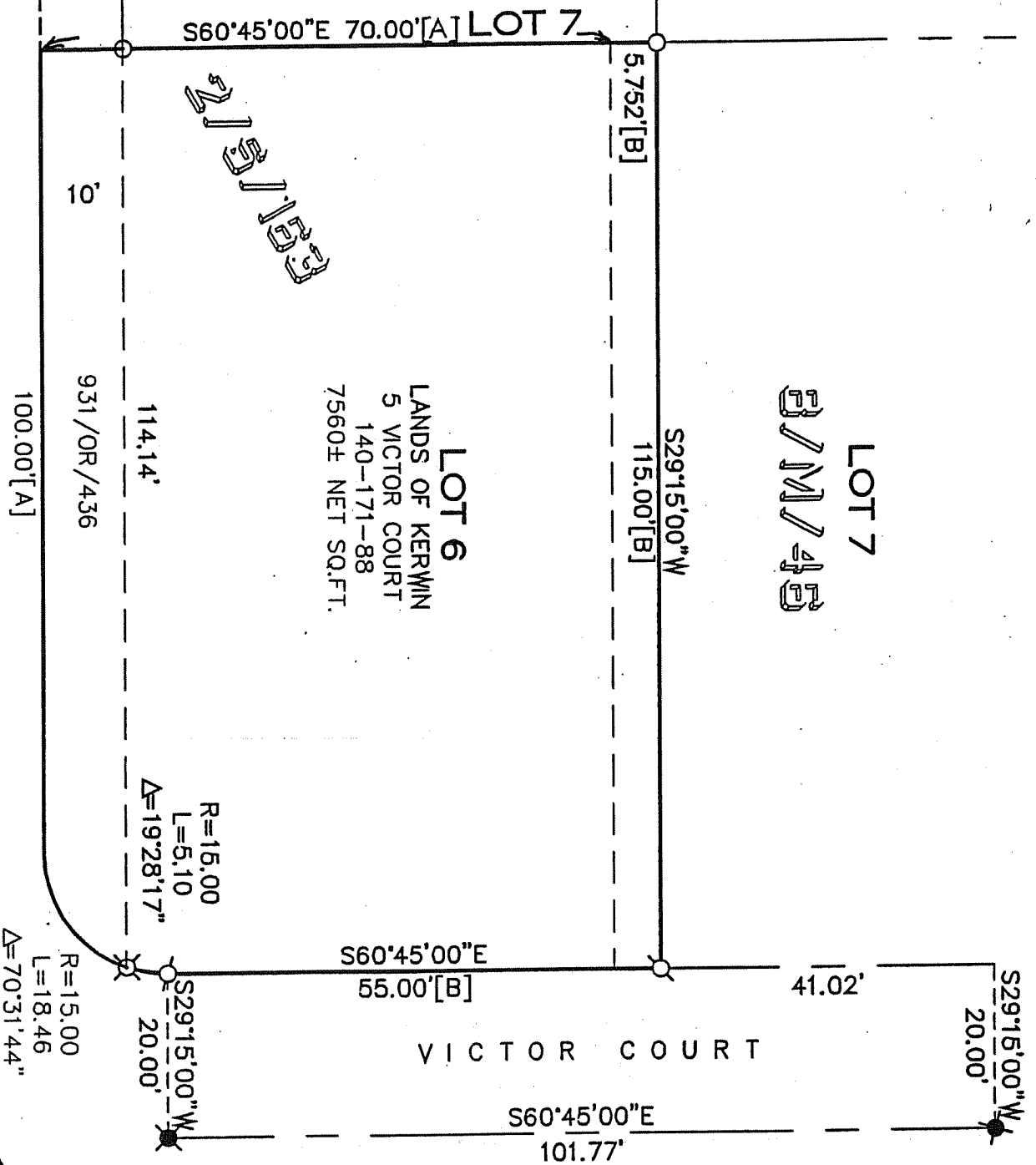
### COUNTY SURVEYOR'S STATEMENT

This Corner Record was received 4-13-2000 19 and examined and filed 4-17-2000 19.

Signed [Signature] Title DEPUTY



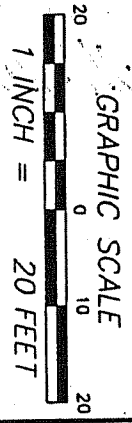
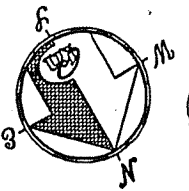
County Surveyor's Comment \_\_\_\_\_



**LOT 7**  
 8/M/48

**LOT 6**  
 LANDS OF KERWIN  
 5 VICTOR COURT  
 140-171-88  
 7560± NET SQ.FT.

TAMALPAIS DRIVE



**REFERENCE**

[A] RECORD OF SURVEY "PORTION LOTS NOS. 133 & 164..." FILED FOR RECORD MARCH 27, 1951 IN VOLUME 2 OF SURVEYS, AT PAGE 163, MARIN COUNTY RECORDS.  
 [B] "MAP OF HILLSIDE SUBDIVISION..." FILED FOR RECORD MARCH 25, 1955 IN VOLUME 8 OF MAPS, AT PAGE 46, MARIN COUNTY RECORDS.

**LEGEND**

- FOUND CITY MONUMENT
- SET TACK & BRASS TAG  
 PLS 6784, IN TOP OF FENCE
- SET 5/8" REBAR WITH  
 CAP, PLS 6784
- ⊗ SET LEAD PLUG & BRASS TAG  
 PLS 6784

**NOTES**

1. RECORD=MEASURED
2. NO EASEMENTS SHOWN

**CORNER RECORD**

**MERIDIAN SURVEYING ENGINEERING, INC.**  
 100 BRAKES LANDING RD., #164  
 GREENBRAE, CA 94123  
 (415) 461-1241

1812 UNION STREET  
 SAN FRANCISCO, CA 94123  
 (415) 440-4131  
 info@meridiansurvey.com