

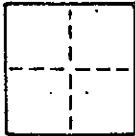
CORNER RECORD

2257

COUNTY OF Marin T. \_\_\_\_\_ R. \_\_\_\_\_ MERIDIAN \_\_\_\_\_ CALIFORNIA

CORNER TYPE: GOVT. CORNER  MEANDER  RANCHO  CONTROL  OTHER

CORNER IDENTIFICATION - DATE OF VISIT \_\_\_\_\_ 19\_\_



A.P. # 140-141-64

CORNER - LEFT AS FOUND  FOUND AND TAGGED  REESTABLISHED OBLITERATED CORNER  RESULT

PHYSICAL DESCRIPTION OF CORNER FOUND; EVIDENCE AND METHOD USED TO IDENTIFY OR REESTABLISH

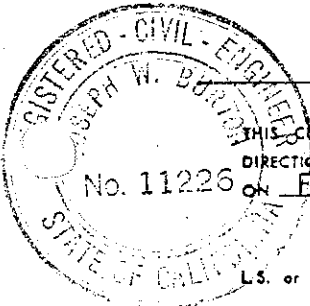
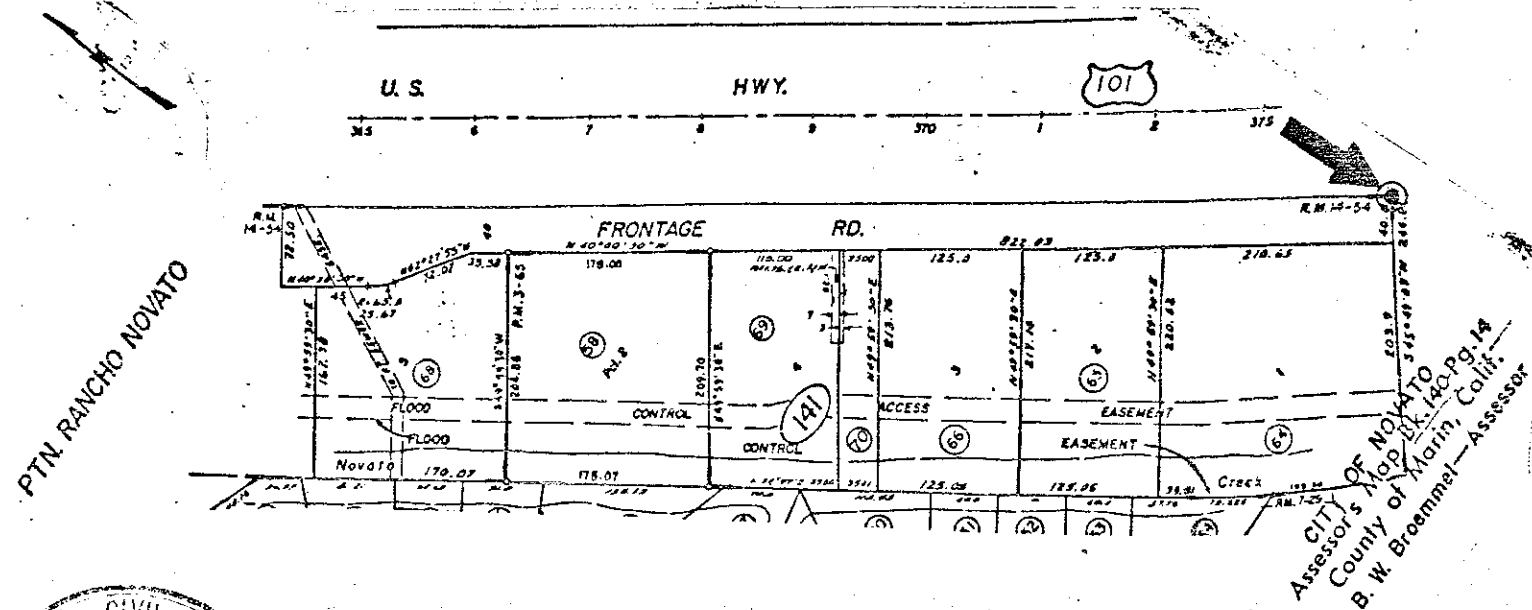
Monument at corner lost.  
Replaced per Map of Shuman Center 14 maps 54

PHYSICAL DESCRIPTION OF MONUMENTS REBUILT OR PERPETUATED

Set street monument per City of Novato Development Standards  
5-47-008 b; U.C.S. Dwg. 930

CALIFORNIA COORDINATE SYSTEM ORDER: FIRST  SECOND  THIRD   
STATIONS USED: NGS (USC & GS)  STATE  COUNTY  OTHER  STATION \_\_\_\_\_ STATION \_\_\_\_\_  
ZONE \_\_\_\_\_ ELEVATION \_\_\_\_\_ NORTHINGS (Y) \_\_\_\_\_ EASTINGS (X) \_\_\_\_\_

SKETCH: (Include reference tie or witness points, remarks and topo of area)



SURVEYOR'S CERTIFICATE

THIS CORNER RECORD WAS PREPARED BY ME OR UNDER MY DIRECTION IN CONFORMANCE WITH THE LAND SURVEYORS ACT

No. 11226 on February 29 1988

SIGNED: Joseph W. Burton

L.S. or R.C.E. No.: RCE 11226  
Expires 12/31/88  
SEAL

COUNTY SURVEYOR'S CERTIFICATE

THE CORNER RECORD WAS RECEIVED AND EXAMINED AND FILED

BY: [Signature]  
TITLE: DEPUTY

DOCUMENT No. \_\_\_\_\_  
STATEMENT ON BACK OF SHEET

EX. 3-31-88

