

CORNER RECORD

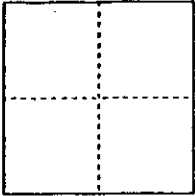
Document Number APN 140-111-36
County of MARIN, California

City of NOVATO

Brief Legal Description PORTION OF LOTS 60 & 91 MAP OF SUB. A & B OF THE NOVATO RANCH, 3 R.M. 86, ADJACENT TO 12 O.S. 83 AND 10 P.M. 43

CORNER TYPE

COORDINATES (Optional)



Government Corner Control
Meander Property
Rancho Other
Date of Survey 5-21-99

N. _____
E. _____
Zone _____ NAD27 NAD83
NAD83 Epoch _____
Elev. _____
Vert. Datum: NGVD29 NAVD88
Meas. Units: Metric Imperial

Corner - Left as found Found and tagged Established Reestablished Rebuilt

Identification and type of corner found: Evidence used to identify or procedure used to establish or reestablish the corner:

REESTABLISHED SOUTHWESTERLY CORNER OF 12 O.S. 83 AND
NORTHEASTERLY CORNER OF PARCEL 3 OF 10 P.M. 43.
SEE OTHER SIDE

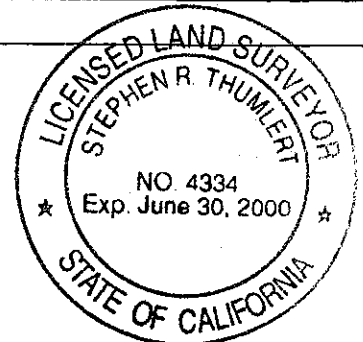
A description of the physical condition of the monument as found and as set or reset:

N/A

SURVEYOR'S STATEMENT

This Corner Record was prepared by me or under my direction in conformance with the Land Surveyors' Act on July 13, 19 99.

Signed Stephen R. Thumbert L.S. or R.C.E. Number 4334

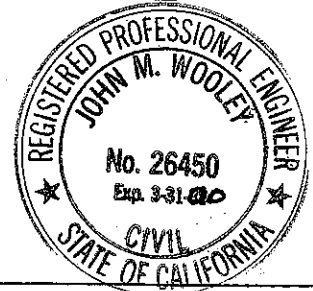


COUNTY SURVEYOR'S STATEMENT

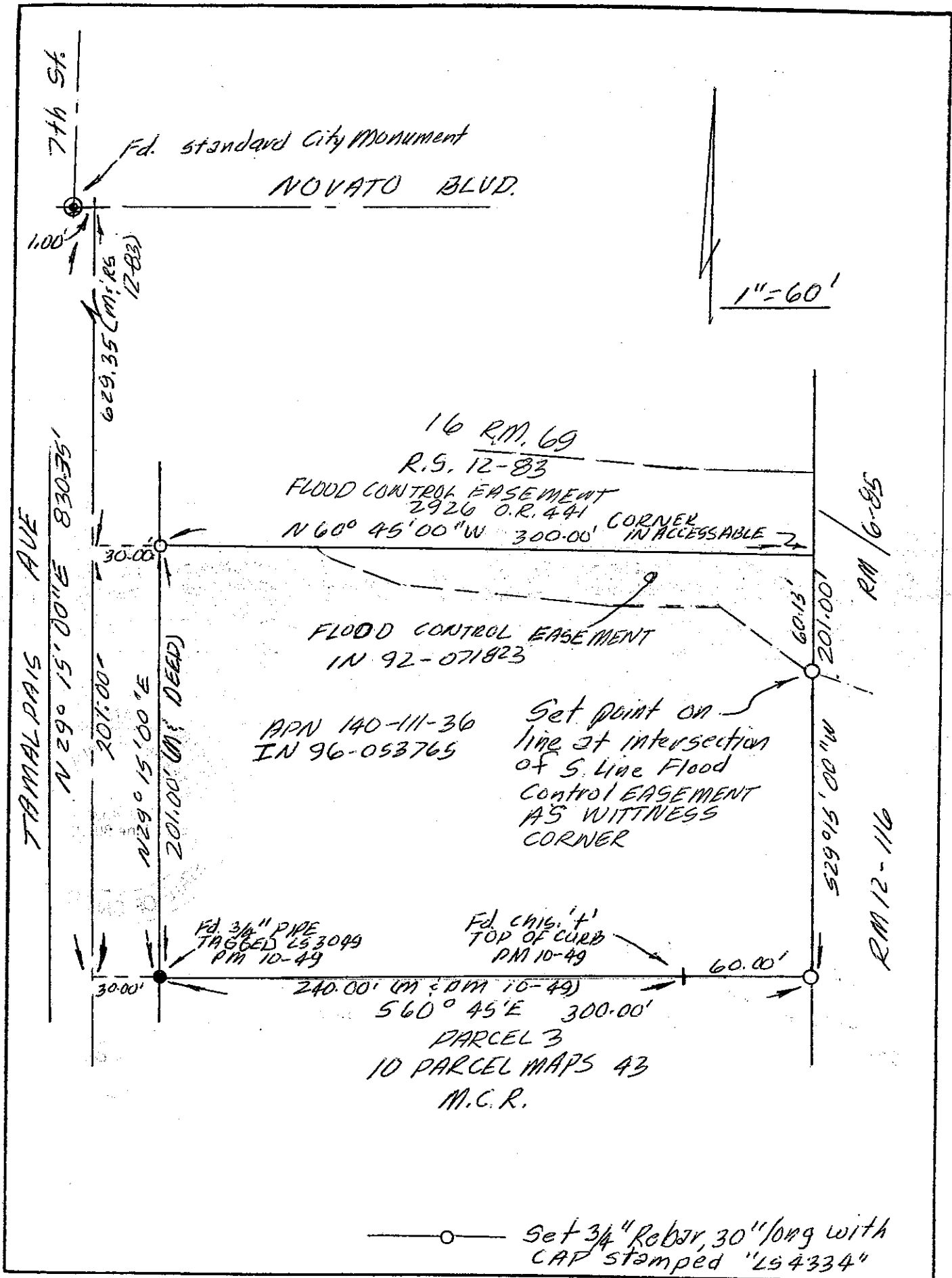
This Corner Record was received JULY 27, 1999 and examined and filed JULY 28, 1999.

Signed John M. Wooley R.C.E. No. 26450

Title Deputy County Surveyor



County Surveyor's Comment _____



1" = 60'

Fd. standard City Monument
NOVATO BLVD.

16 R.M. 69
R.S. 12-83
FLOOD CONTROL EASEMENT
2926 O.R. 441 CORNER
N 60° 45' 00" W 300.00' IN ACCESSABLE 2

FLOOD CONTROL EASEMENT
IN 92-071823

APN 140-111-36
IN 96-053765

Set point on
line at intersection
of S. line Flood
Control EASEMENT
AS WITNESS
CORNER

Fd. 3/4" PIPE
TAGGED L53049
RM 10-49

Fd. chg. 't'
TOP OF CURB
RM 10-49

240.00' (M & DM 10-49)
560° 45' E 300.00'
PARCEL 3
10 PARCEL MAPS 43
M.C.R.

—○— Set 3/4" Rebar, 30" long with
CAP stamped "L54334"