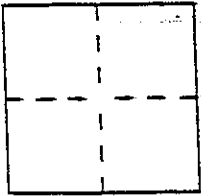


CORNER RECORD

Assessor's Parcel Number 140-082-68

City of Novato County of Marin, California

Brief Legal Description Parcel 3, Book 17, Parcel Maps, page 44, Marin County Records



CORNER TYPE

COORDINATES (Optional)

- Government Corner
- Meander
- Rancho
- Date of Survey _____
- Control
- Property
- Other

N. _____
 E. _____
 Zone _____ Datum _____
 Elev. _____

Corner — Left as found Found and tagged Established Reestablished Rebuilt

Identification and type of corner found: Evidence used to identify or procedure used to establish or reestablish the corner:
Found 2 Iron pipes w/ tags per map. Set 2 Iron Pipes per corner Record. Used monuments in McClay Road as basis for survey.

A description of the physical condition of the monument as found and as set or reset: Found 2 - 3/4 inch diameter Iron pipes and tags LS 3775 as shown on Corner Record map (over). Set 2 - 3/4" diameter Iron pipes & tags LS 4397 Per Corner Record map (over).

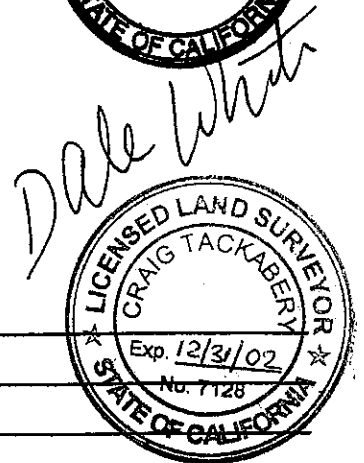
SURVEYOR'S STATEMENT

This Corner Record was prepared by me or under my direction in conformance with the Land Surveyors' Act on April 23 ²⁰⁰²
 Signed Dale White LS. or R.C.E. Number LS 4397



COUNTY SURVEYOR'S STATEMENT

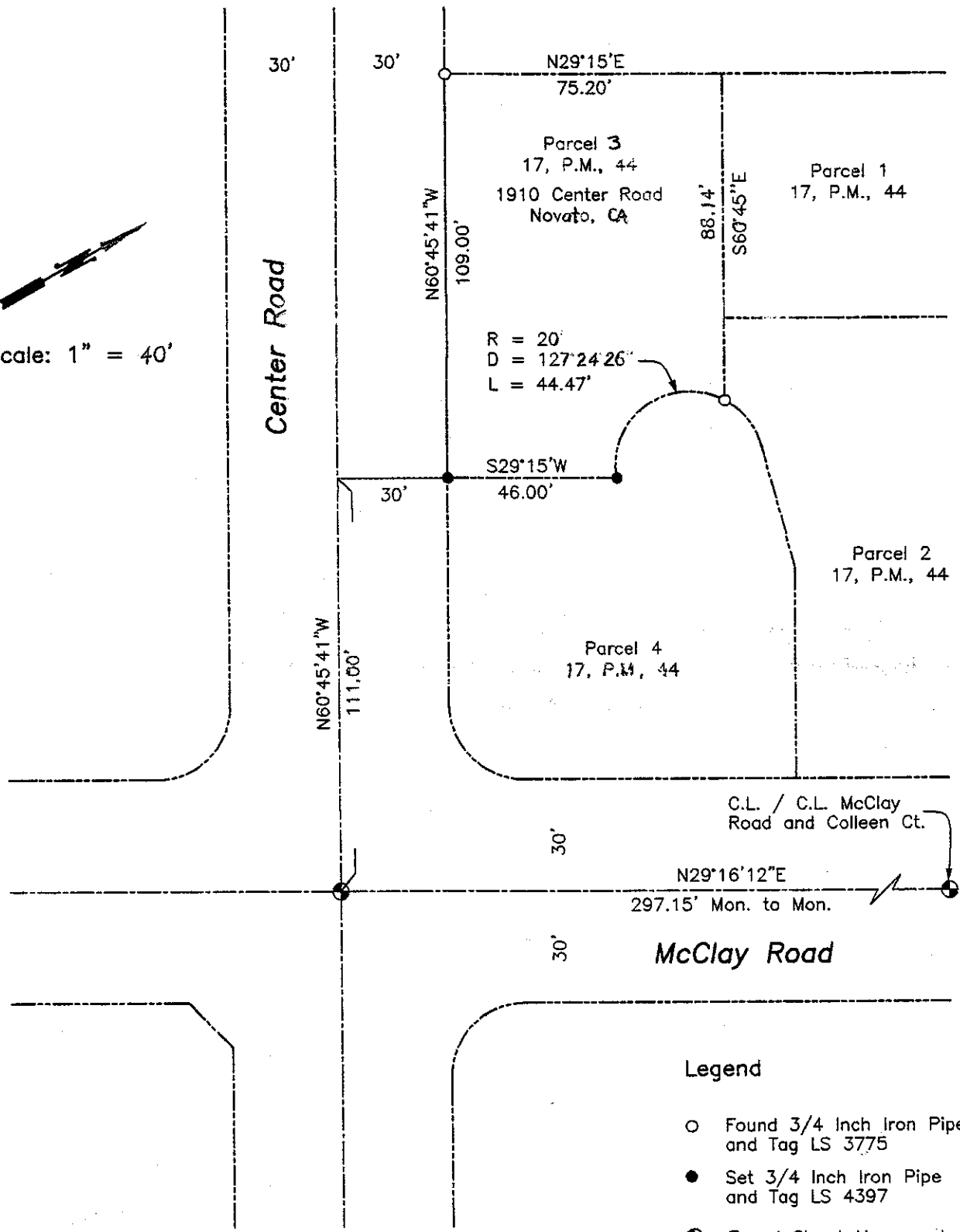
This Corner Record was received MAY 10, ²⁰⁰² and examined
 and filed MAY 13, ²⁰⁰²
 Signed Craig Tackabery Title DEPUTY



County Surveyor's Comment _____



Scale: 1" = 40'



Legend

- Found 3/4 Inch Iron Pipe and Tag LS 3775
- Set 3/4 Inch Iron Pipe and Tag LS 4397
- ⊕ Found Street Monument

Corner Record

Parcel 3, Book 17, Parcel Maps, Page 44
Marin County Records

