

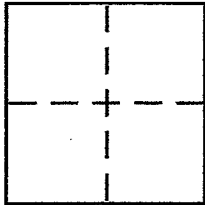
CORNER RECORD

Document Number 140-082-42

City of NOVATO

County of MARIN, California

Brief Legal Description LOT 8 MAP OF MARGORY COURT 14 MAPS 82



CORNER TYPE

Government Corner Control
Meander Property
Rancho Other
Date of Survey 7/5 & 7/6 2011

COORDINATES (Optional)

N. _____
E. _____
Zone _____ NAD27 NAD83
NAD83 Epoch _____
Elev. _____
Vert. Datum: NGVD29 NAVD88
Meas. Units: Metric Imperial

Corner - Left as found Found and tagged Established Reestablished Rebuilt

Identification and type of corner found: Evidence used to identify or procedure used to establish or reestablish the corner:

REESTABLISH THE NORTHERLY & EASTERLY LINE OF LOT 8, MAP OF MARGORY COURT, 14 MAPS 82 FROM EXISTING STREET MONUMENTS ON MARGORY COURT THAT ARE DEPICTED UPON SAID RECORD MAP. REFER TO SKETCH ON REVERSE SIDE FOR DETAILS.

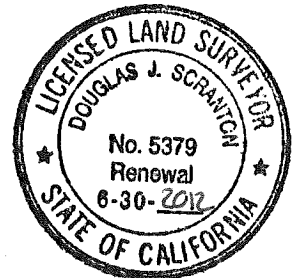
A description of the physical condition of the monument as found and as set or reset: SET EITHER 1/2" REBAR WITH A YELLOW PLASTIC CAP ATTACHED TO TOP OF REBAR, CAP EMBOSSED "SCRANTON, PLS 5379" (TOP OF REBAR DRIVEN FLUSH TO SURROUNDING GRADE) OR SET BRASS PIN WITH BRASS TAG STAMPED LS 5379. SEE REVERSE SIDE FOR LOCATIONS OF POINTS SET.

SURVEYOR'S STATEMENT

This Corner Record was prepared by me or under my direction in conformance with

the Land Surveyor's Act on July 11 2011

Signed Douglas J. Scranton P.L.S or R.C.E. No. PLS 5379



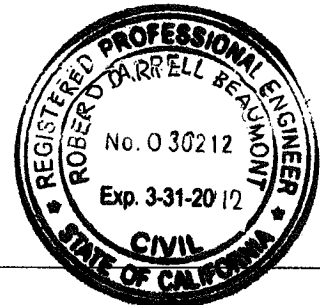
COUNTY SURVEYOR'S STATEMENT

This Corner Record was received JULY 12, 2011

and examined and filed AUGUST 4, 2011

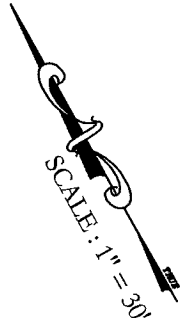
Signed [Signature] P.L.S or R.C.E. No. 30212

Title DEP. COUNTY SURVEYOR



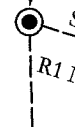
County Surveyor's Comment _____

PREPARED BY: DJ SCRANTON SURVEYING PETAUMA, CALIFORNIA

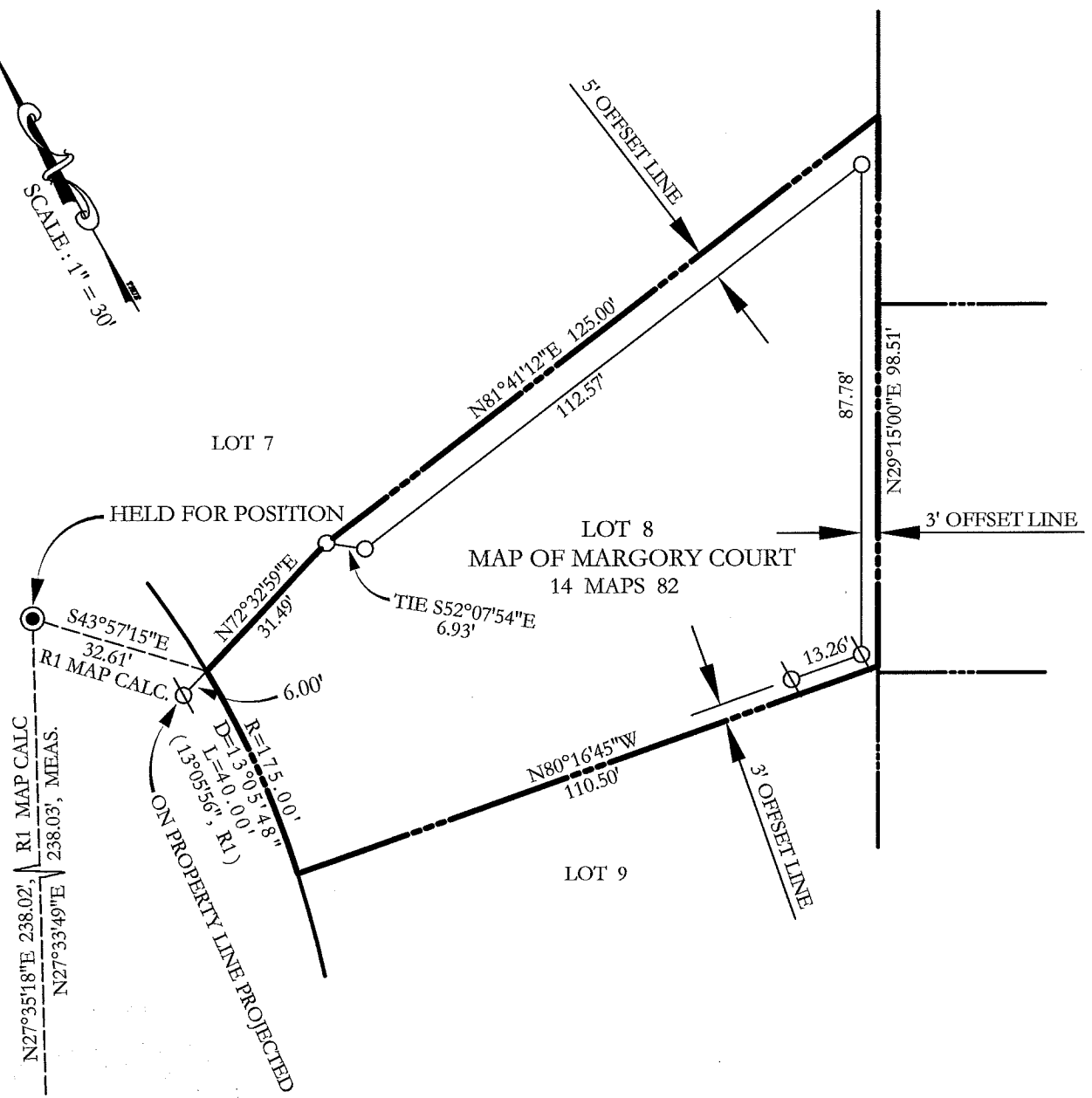
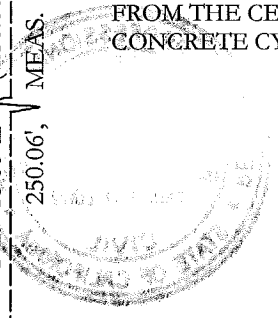


MARGORY COURT (40')

BASIS OF BEARINGS



NOTE:
 MONUMENT PIN IN CONCRETE CYLINDER IS SHEARED OFF BUT PIN POSITION IS STILL VISIBLE. PIN POSITION IS S40°E, ±0.04' FROM THE CENTER OF THE CONCRETE CYLINDER



LEGEND

- STANDARD STREET MONUMENT PER R1 (CONCRETE CYLINDER WITH SMALL PIN)
- SET 1/2" REBAR WITH PLASTIC CAP EMBOSSED "PLS 5379 SCRANTON" ATTACHED TO TOP OF REBAR
- ⊗ SET BRASS NAIL WITH BRASS TAG LS 5379 IN CONCRETE
- R1 14 MAPS 82

BASIS OF BEARINGS

TAKEN AS NORTH 29°15'00" EAST BETWEEN MONUMENTS ON MARGORY COURT AS SHOWN HEREON AND AS SAID MONUMENTS ARE SHOWN UPON R1

ALL DIMENSIONS GIVEN IN FEET AND DECIMALS THEREOF

NO EASEMENTS ARE SHOWN