

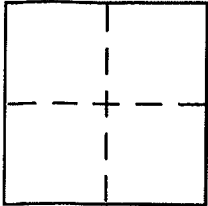
CORNER RECORD

Document Number 140-082-01

City of Novato

County of Marin, California

Brief Legal Description Portion Lot 82, 13 Maps 36, Per 18 R.S. 8'



CORNER TYPE

Government Corner Control
Meander Property
Rancho Other
Date of Survey 9/26/05

COORDINATES (Optional)

N. _____
E. _____
Zone _____ NAD27 NAD83
NAD83 Epoch _____
Elev. _____
Vert. Datum: NGVD29 NAVD88
Meas. Units: Metric Imperial

Corner - Left as found Found and tagged Established Reestablished Rebuilt

Identification and type of corner found: Evidence used to identify or procedure used to establish or reestablish the corner:

See Page 2 of 2

A description of the physical condition of the monument as found and as set or reset:

See Page 2 of 2

SURVEYOR'S STATEMENT

This Corner Record was prepared by me or under my direction in conformance with the Land Surveyor's Act on November 17 2005

Signed [Signature] P.L.S or R.C.E. No. 6784

COUNTY SURVEYOR'S STATEMENT

This Corner Record was received NOVEMBER 21, 2005

and examined and filed DECEMBER 19, 2005

Signed [Signature] P.L.S or R.C.E. No. 7128

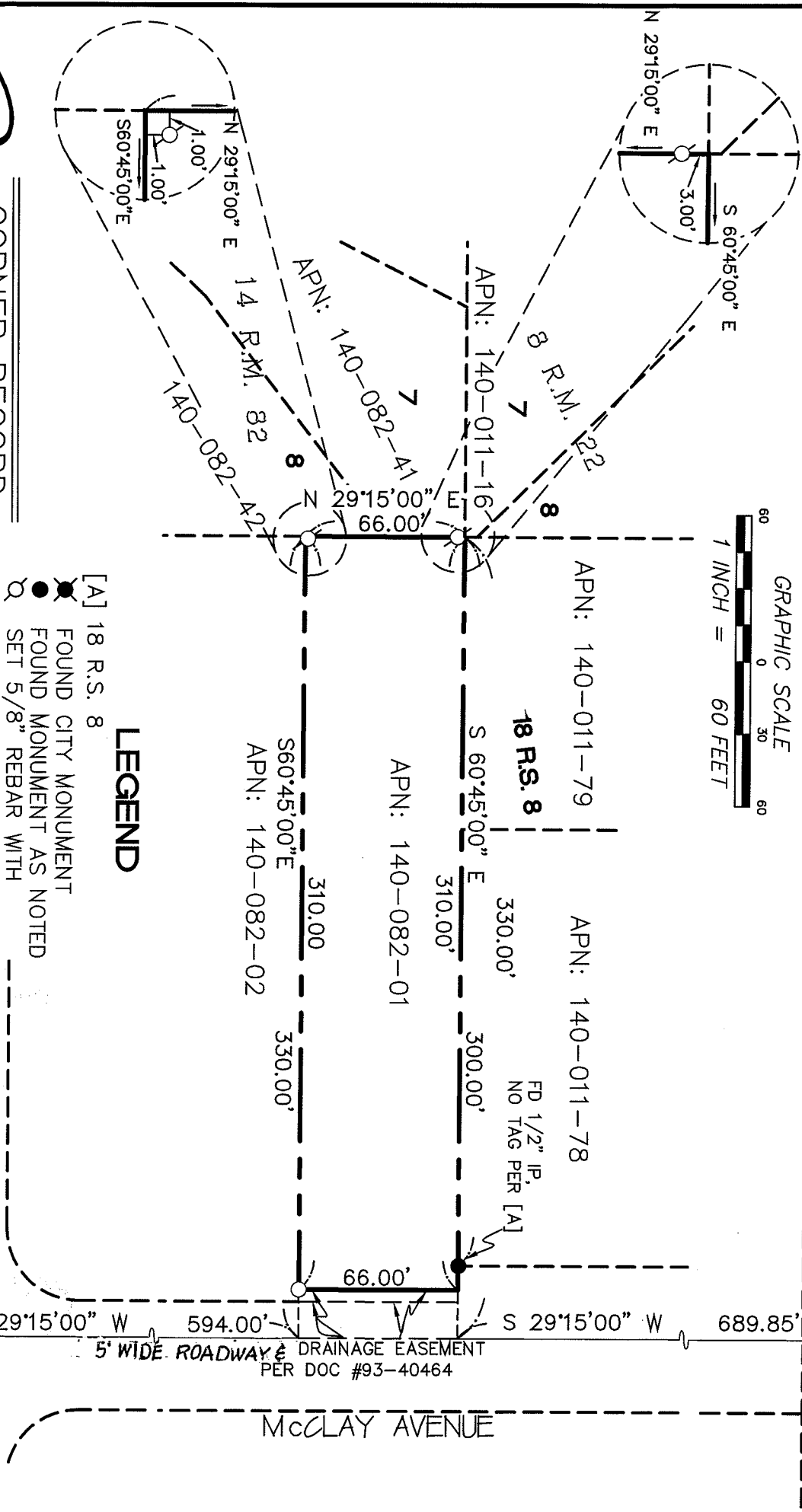
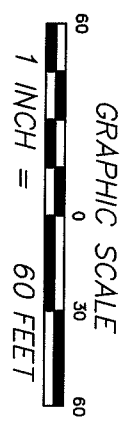
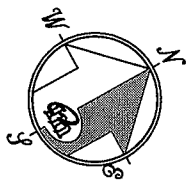
Title COUNTY SURVEYOR

County Surveyor's Comment _____



REFERENCE

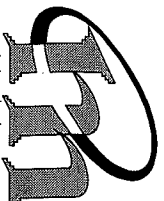
"RECORD OF SURVEY AND LOT LINE ADJUSTMENT..., NOVATO, CALIFORNIA" FILED FOR RECORD 9 NOVEMBER 1982 IN BOOK 18 OF SURVEYS, AT PAGE 8, MARIN COUNTY RECORDS.



LEGEND

- [A] 18 R.S. 8
 - FOUND CITY MONUMENT
 - FOUND MONUMENT AS NOTED
 - SET 5/8" REBAR WITH CAP, PLS 6784
 - SET MAG NAIL & WASHER PLS 6784 IN AC DRIVE
- NOTE
RECORD=MEASURED

CORNER RECORD



MERIDIAN SURVEYING
ENGINEERING, INC.

1812 UNION STREET
SAN FRANCISCO, CA 94123
(415) 440-4131
Info@meridiansurvey.com

05083
777 GRAND AVENUE, SUITE 202
SAN RAFAEL, CA 94901
(415) 456-5450

NOVATO BLVD.

McCLAY AVENUE

CENTER ROAD