

CORNER RECORD

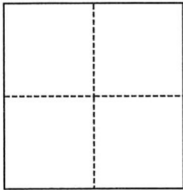
21-026

APN 140-081-23,
26, 27 & 29

Agency Index _____
Document Number 2013-67415 & 2013-67416

City of Novato County of Marin, California

Brief Legal Description Pcl 2, 7 PM99 & Pcls 5, 6 & 8, B PM92, Marin Co. Records



CORNER TYPE

- Government Corner Control
 Meander Property
 Rancho Other

Date of Survey 2-23-2021

COORDINATES (Optional)

N. _____ E. _____

Elevation _____

Units Metric U.S. Survey Foot

Horizontal Datum _____

Zone _____ Epoch Date _____

Vertical Datum _____

Complies with Public Resources Code §§8801-8819

Complies with Public Resources Code §§8890-8902

PLS Act Ref.: 8765(d) 8771 8773 Other:

Corner/Monument: Left as found Established Rebuilt Pre-Construction

Found and tagged Reestablished Referenced Post-Construction

Narrative of corner identified and monument as found, set, reset, replaced, or removed:

See sheet #2 for description(s):

SURVEYOR'S STATEMENT

This Corner Record was prepared by me or under my direction in conformance with

the Professional Land Surveyors' Act on 2-25-2021

Signed Dale White (P.L.S.) or R.C.E. No. 4397



COUNTY SURVEYOR'S STATEMENT

This Corner Record was received 3-2-21

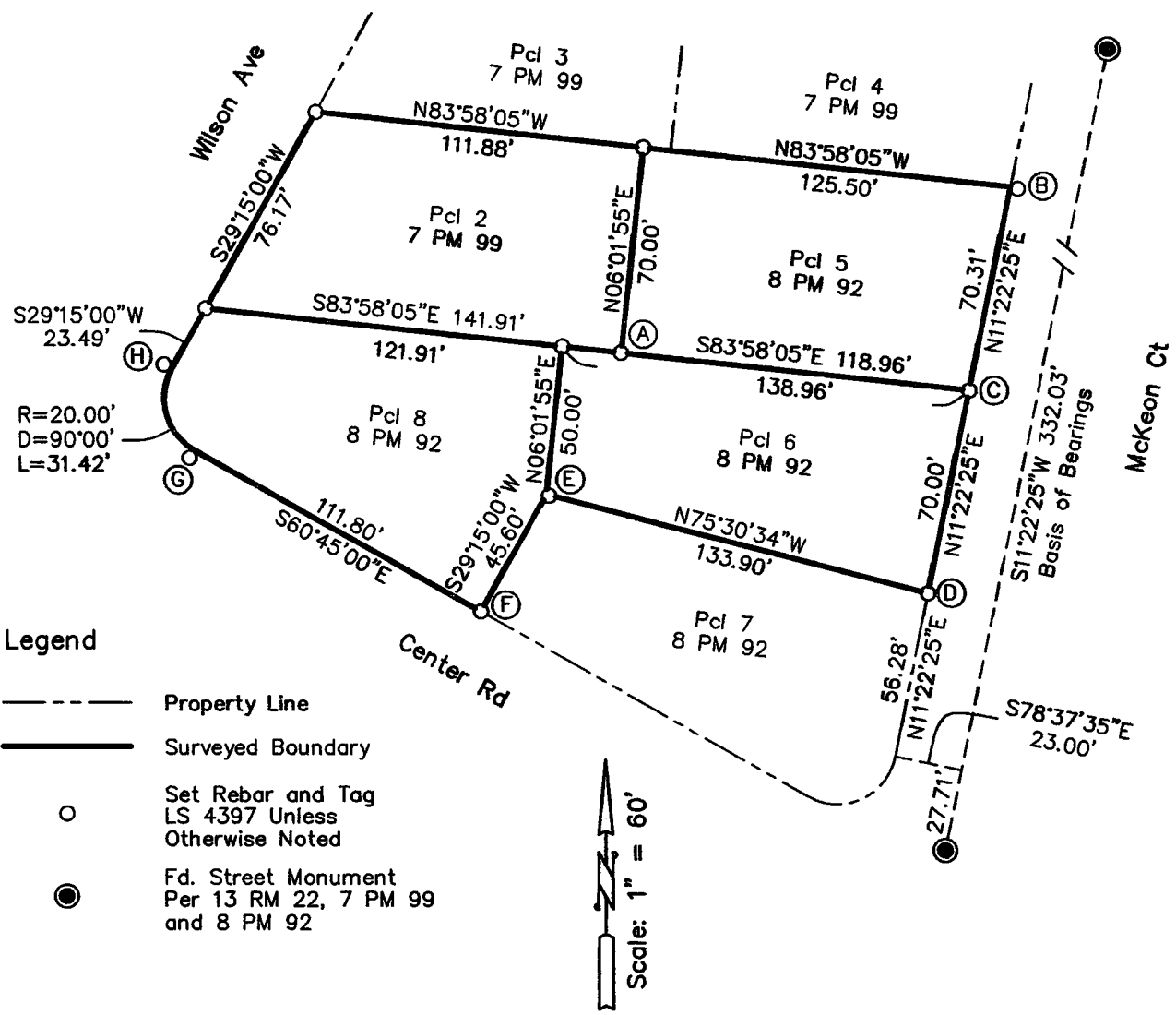
and examined and filed 5-12-21

Signed [Signature] P.L.S. or R.C.E. No. 9292

Title DEPUTY

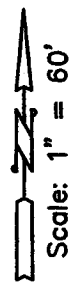
County Surveyor's Comment _____





Legend

- Property Line
- Surveyed Boundary
- Set Rebar and Tag
LS 4397 Unless
Otherwise Noted
- Fd. Street Monument
Per 13 RM 22, 7 PM 99
and 8 PM 92



Abbreviations

- PM Parcel Map
- RM Record Map

Monument Notes

- (A) Set Nail and Tag 4397 in Wood Deck at the Property Corner.
- (B) Set Nail and Tag 4397 in Sidewalk S83°58'05"E 2.00' from the Property Corner.
- (C) Set Nail and Tag 4397 in Concrete at the Property Corner.
- (D) Set Nail and Tag 4397 in Concrete Curb End at the Property Corner.
- (E) Set Rebar and Tag 4397 S75°30'34"E 1.00' from the Property Corner.
- (F) Set Nail and Tag 4397 in the Top Rail of a Wooden Fence at the Property Corner.
- (G) Set Rebar and Tag 4397 S29°15'00"W 3.00' from the Property Corner.
- (H) Set Rebar and Tag 4397 N60°45'00"W 3.00' from the Property Corner.

White & Prescott
1400 Grant Avenue
Novato, CA 94945

Corner Record

Boundary Survey
Parcels 2, 7 PM 99 and
Parcels 5, 6, & 8, 8 PM 92
Marin County Records