

**CORNER RECORD**

Document Number APN 140-062-06

City of Novato

County of Marin, California

Brief Legal Description Lot 1, Edgewater Condo.s, Phase 2, 1998 Maps 17, M.C.R.



**CORNER TYPE**

Government Corner  Control   
Meaneder  Property   
Rancho  Other   
Date of Survey 4/25/12

**COORDINATES (Optional)**

N. \_\_\_\_\_  
E. \_\_\_\_\_  
Zone  NAD27  NAD83   
NAD83 Epoch \_\_\_\_\_  
Elev. \_\_\_\_\_  
Vert. Datum: NGVD29  NAVD88   
Meas. Units: Metric  Imperial

Corner - Left as found  Found and tagged  Established  Reestablished  Rebuilt

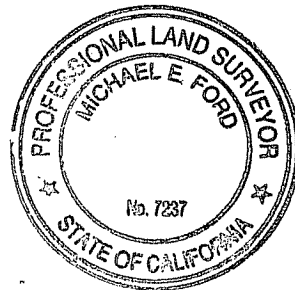
Identification and type of corner found: Evidence used to identify or procedure used to establish or reestablish the corner:

Found centerline monuments at the intersections of Nave Ct. and S. Novato Blvd. & Joan Ave. and S. Novato Blvd. were used to reestablish the location of the Northerly line of Lot 1, 1998 Maps 17.

A description of the physical condition of the monument as found and as set or reset: 1/2" iron pipes tagged LS 7237

**SURVEYOR'S STATEMENT**

This Corner Record was prepared by me or under my direction in conformance with the Land Surveyor's Act on APRIL 30 2012  
Signed Michael E. Ford P.L.S. or R.C.E. No. 7237



**COUNTY SURVEYOR'S STATEMENT**

This Corner Record was received MAY 17, 2012  
and examined and filed JUNE 7, 2012  
Signed \_\_\_\_\_ P.L.S. or R.C.E. No. 7128  
Title COUNTY SURVEYOR

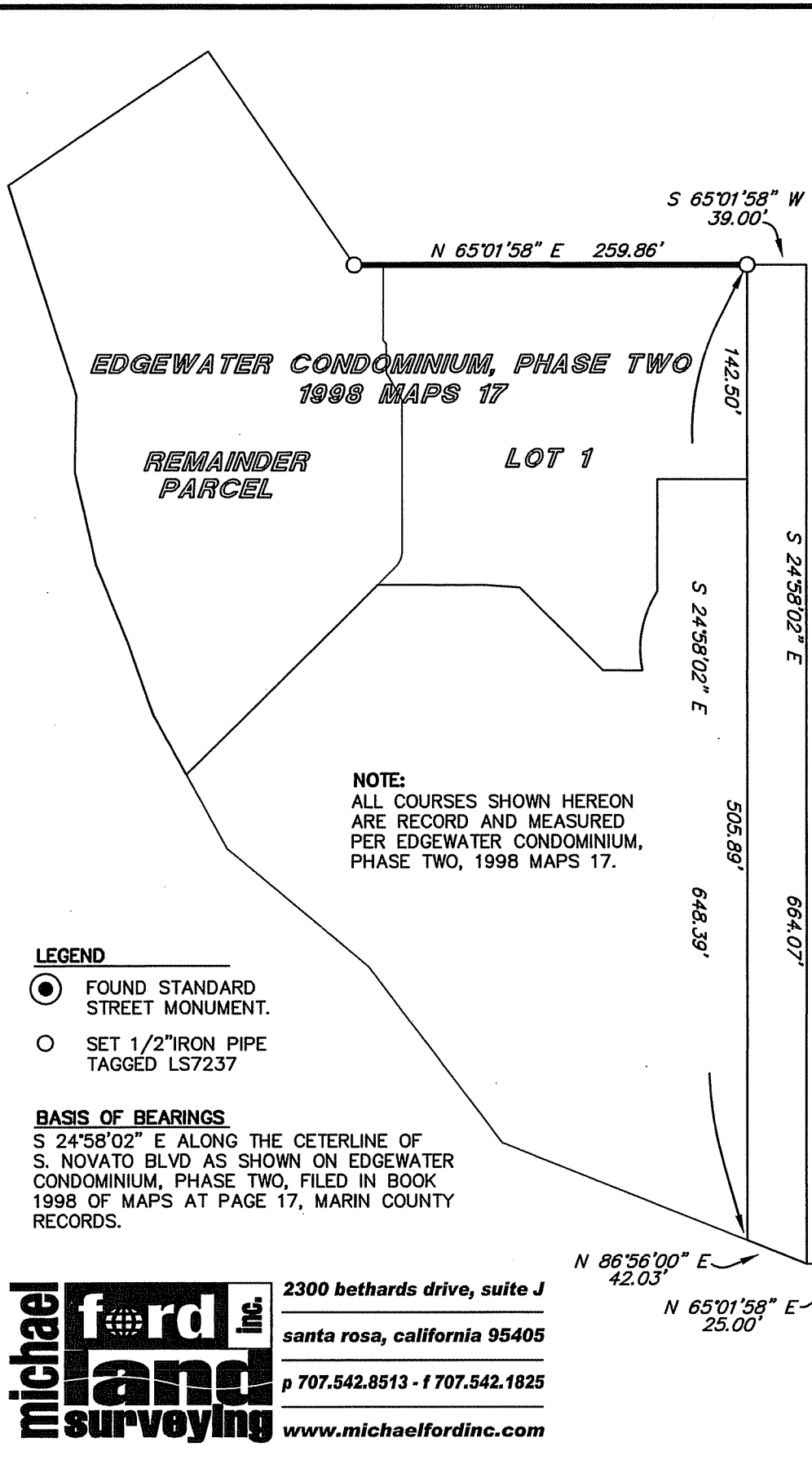


County Surveyor's Comment

\_\_\_\_\_  
\_\_\_\_\_  
\_\_\_\_\_



SCALE: 1"=100'



EDGEWATER CONDOMINIUM, PHASE TWO  
1998 MAPS 17

REMAINDER  
PARCEL

LOT 1

**NOTE:**  
ALL COURSES SHOWN HEREON  
ARE RECORD AND MEASURED  
PER EDGEWATER CONDOMINIUM,  
PHASE TWO, 1998 MAPS 17.

**LEGEND**

- FOUND STANDARD STREET MONUMENT.
- SET 1/2" IRON PIPE TAGGED LS7237

**BASIS OF BEARINGS**

S 24°58'02" E ALONG THE CENTERLINE OF S. NOVATO BLVD AS SHOWN ON EDGEWATER CONDOMINIUM, PHASE TWO, FILED IN BOOK 1998 OF MAPS AT PAGE 17, MARIN COUNTY RECORDS.



2300 bethards drive, suite J  
santa rosa, california 95405  
p 707.542.8513 - f 707.542.1825  
www.michaelfordinc.com