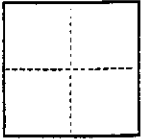


CORNER RECORD

A.P.N. 140-053-20

COUNTY OF MARIN T. _____ R. _____ MERIDIAN _____ CALIFORNIA

CORNER TYPE: GOV'T. CORNER MEANDER RANCHO CONTROL OTHER
CORNER IDENTIFICATION — DATE OF VISIT 5-13 19 93



CORNER — LEFT AS FOUND FOUND AND TAGGED REESTABLISHED OBLITERATED CORNER REBUILT SEE SKETCH

PHYSICAL DESCRIPTION OF CORNER FOUND; EVIDENCE AND METHOD USED TO IDENTIFY OR REESTABLISH

SEE SKETCH

PHYSICAL DESCRIPTION OF MONUMENTS REBUILT OR PERPETUATED

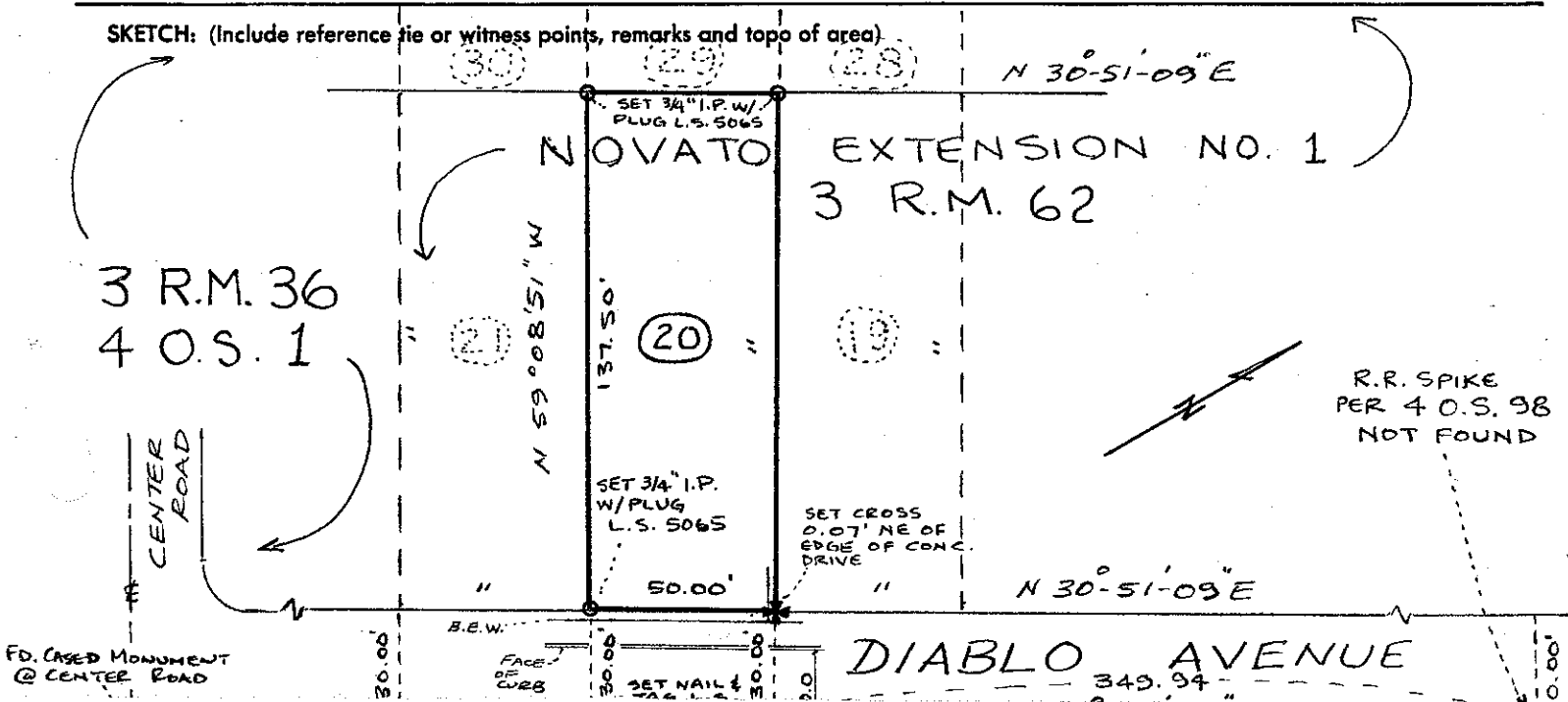
SEE SKETCH :

SET CORNERS AND REFERENCES FOR LOT 20,
NOVATO EXTENSION NO. 1 (3 R.M. 62) AS SHOWN.

CALIFORNIA COORDINATE SYSTEM ORDER: FIRST SECOND THIRD
STATIONS USED: NGS (USC & GS) STATE COUNTY OTHER STATION _____ STATION _____
ZONE _____ ELEVATION _____ NORTHINGS (Y) _____ EASTINGS (X) _____

(Fold)

SKETCH: (Include reference tie or witness points, remarks and topo of area)



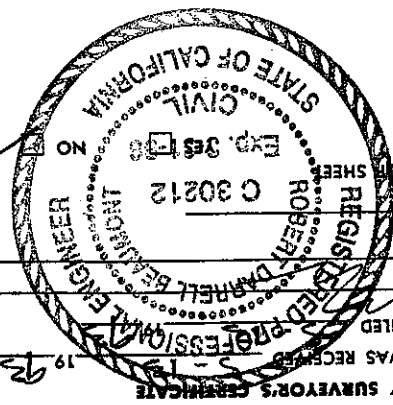


SURVEYOR'S CERTIFICATE

THIS CORNER RECORD WAS PREPARED BY ME OR UNDER MY
 DIRECTION IN CONFORMANCE WITH THE LAND SURVEYORS ACT
 ON 5-13 19 93

SIGNED: David L. Williams

L.S. or R.C.E. No.: 5065



COUNTY SURVEYOR'S CERTIFICATE

THE CORNER RECORD WAS RECEIVED BY ME OR UNDER MY
 DIRECTION AND EXAMINED AND FILED

BY: Robert D. Barrett

TITLE: REGISTERED PROFESSIONAL ENGINEER

DOCUMENT No. C 30212

Exp. 3/31/98

STATE OF CALIFORNIA

CIVIL ENGINEER

STATEMENT ON BACK OF SHEET

