



JERRICO ASSOCIATES

SUITE 27
77 MARK DRIVE
SAN RAFAEL, CA 94903

7229-1

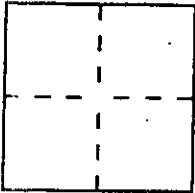
CORNER RECORD

Document Number 140-041-52/

City of Novato

County of Marin, California

Brief Legal Description 96-30165 (9 O.S. 12)



CORNER TYPE

Government Corner Control
 Meander Property
 Rancho Other
 Date of Survey Jan 5, 1998

COORDINATES (Optional)

N. _____
 E. _____
 Zone _____ Datum _____
 Elev. _____

Corner — Left as found Found and tagged Established Reestablished Rebuilt

Identification and type of corner found: Evidence used to identify or procedure used to establish or reestablish the corner:

Found points per 9 O.S. 12

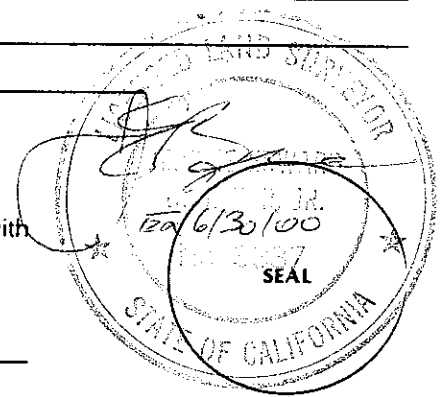
A description of the physical condition of the monument as found and as set or reset:

(A) (B) (C) Found L.P. and LS 3049
 (D) Set #5 rebar and cap LS 3887

SURVEYOR'S STATEMENT

This Corner Record was prepared by me or under my direction in conformance with the Land Surveyors' Act on Jan 5 19 98.

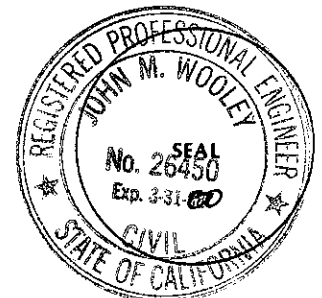
Signed [Signature] L.S. or R.C.E. Number LS 3887



COUNTY SURVEYOR'S STATEMENT

This Corner Record was received APRIL 6 19 98 and examined and filed APRIL 7 19 98.

Signed [Signature] Title DEPUTY



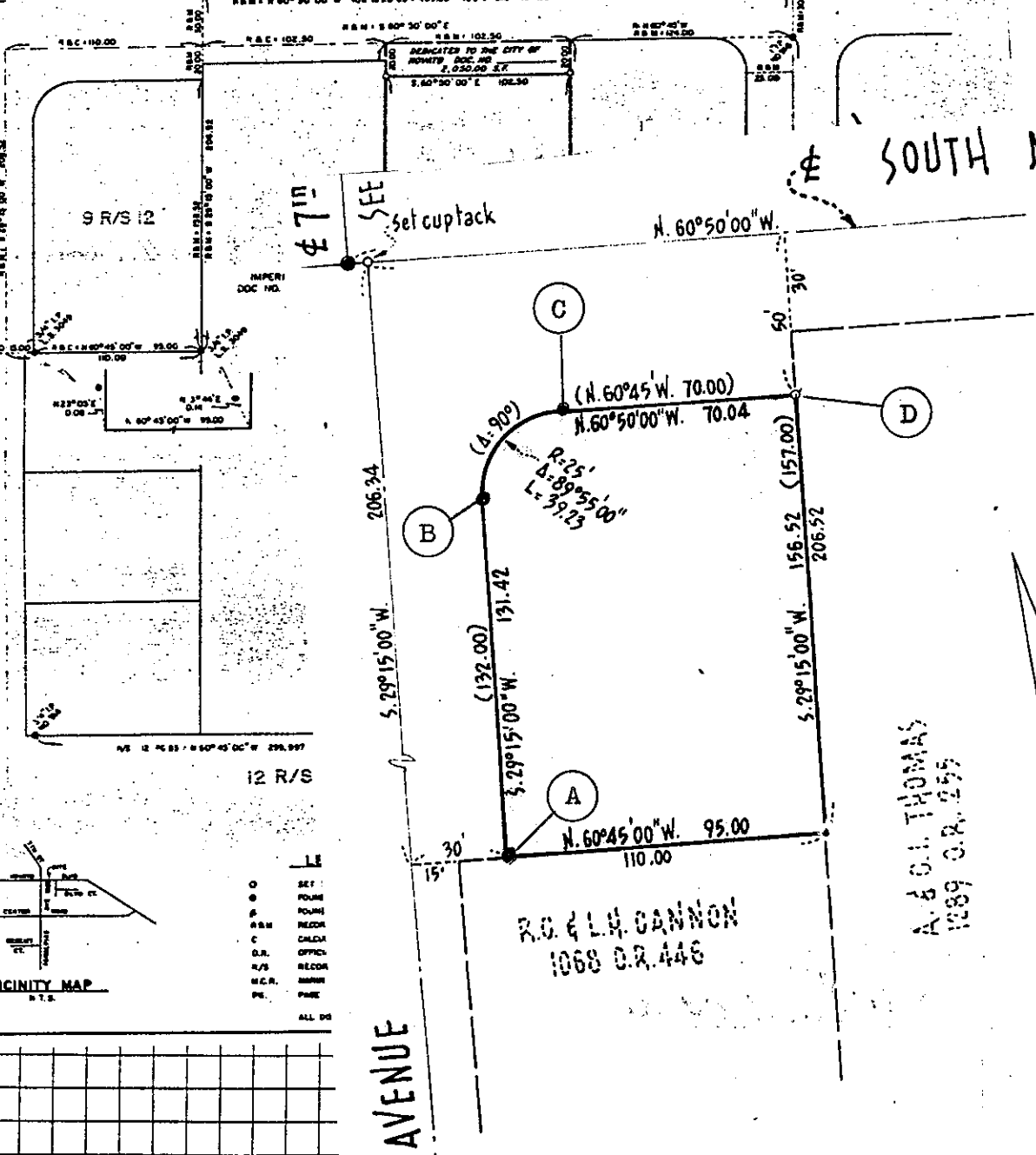
County Surveyor's Comment _____

7TH ST.

SOUTH NOVATO BOULEVARD

TAMALPIAS AVENUE

SOUTH NOVATO



- LE
- SET
- PLUM
- PLUM
- RECOR
- CALC
- OFFIC
- RECOR
- RECOR
- RECOR
- RECOR
- RECOR
- ALL DO

R.O. & L.V. CANNON
1068 O.R. 446

A. & O.L. THOMAS
1089 O.R. 255

K. Nail
0.31
Set conc. Nail

495.00
CENTER ROAD