

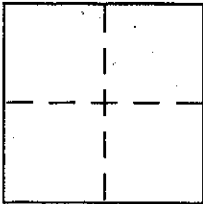
CORNER RECORD

Document Number A.P.N 132-371-33

City of NOVATO

County of MARIN, California

Brief Legal Description LOT 12 PER 16 R.M. 55, AS ADJUSTED BY RECORD OF SURVEY 13 O.S. 95



CORNER TYPE

Government Corner  Control   
Meander  Property   
Rancho  Other   
Date of Survey 5-6-2002

COORDINATES (Optional)

N. \_\_\_\_\_  
E. \_\_\_\_\_  
Zone \_\_\_\_\_ NAD27  NAD83   
NAD83 Epoch \_\_\_\_\_  
Elev. \_\_\_\_\_  
Vert. Datum: NGVD29  NAVD88   
Meas. Units: Metric  Imperial

Corner - Left as found  Found and tagged  Established  Reestablished  Rebuilt

Identification and type of corner found: Evidence used to identify or procedure used to establish or reestablish the corner:

= SEE OVER =

(ONLY THE ORIGINAL CENTERLINE MONUMENTS WERE EMPLOYED AS SHOWN ON REVERSE - OTHER POINTS SHOWN ON 13 O.S. 95 WERE NOT FOUND)

A description of the physical condition of the monument as found and as set or reset:

= SEE OVER =

SURVEYOR'S STATEMENT

This Corner Record was prepared by me or under my direction in conformance with

the Land Surveyor's Act on AUGUST 12, 2002

Signed David Contreras P.L.S. or R.C.E. No. 5065



COUNTY SURVEYOR'S STATEMENT

This Corner Record was received AUGUST 16, 2002

and examined and filed AUGUST 23, 2002

Signed Craig Tackabery P.L.S. or R.C.E. No. 7128

Title DEPUTY



County Surveyor's Comment \_\_\_\_\_

LOT 11  
N86°03'50"W  
63.60'  
R=70'

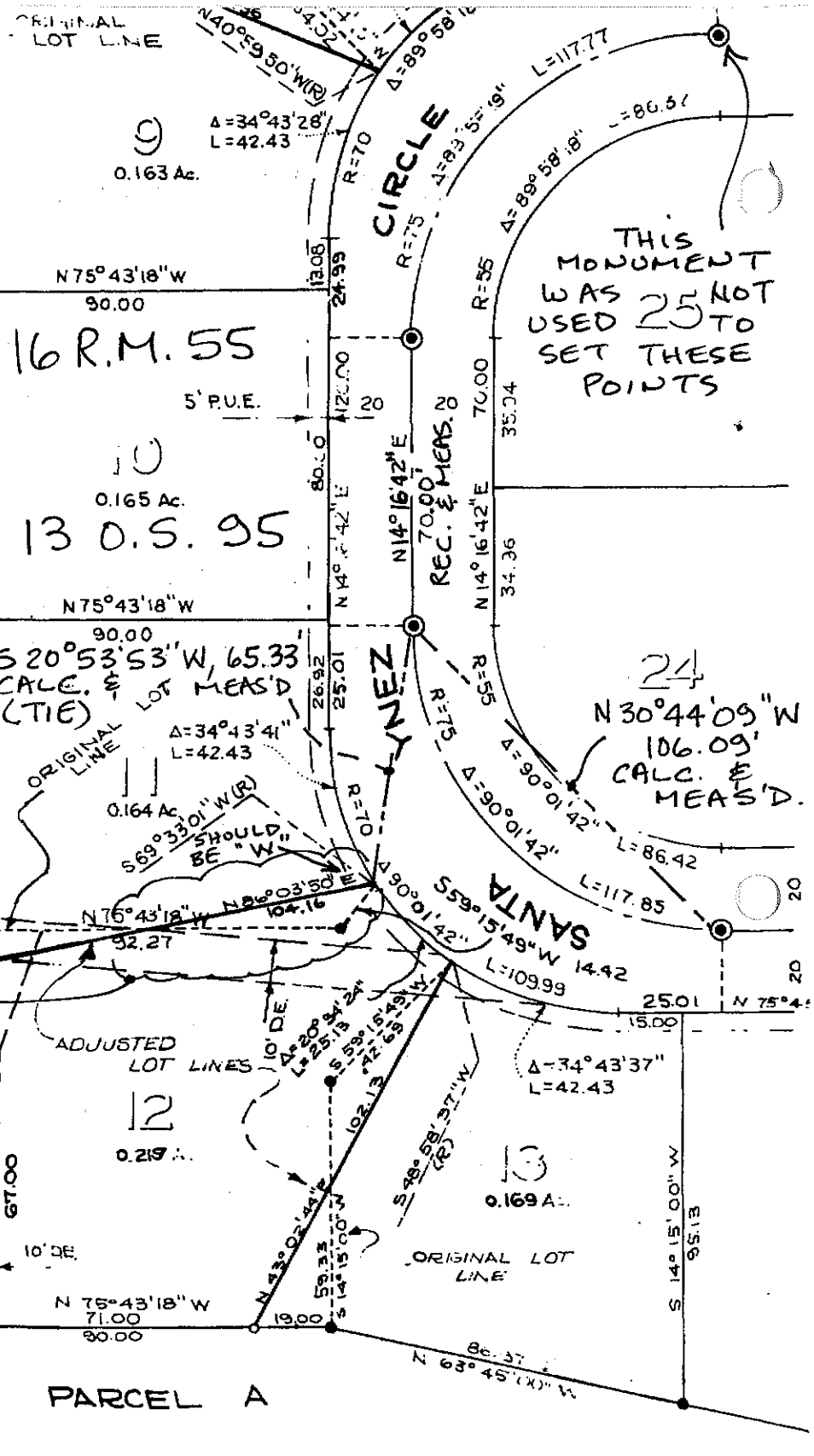
LOT 12

SCALE: 1" = 40'

ST. FRANCIS HEIGHTS UNIT TWO  
10 RM. 122

SEE  
DETAIL  
ABOVE

1" = 40'



LEGEND

- Found 3/4" I.P., R.C.E. 10759
- Set 3/4" I.P., R.C.E. 10759
- ◎ Fnd. standard street monument, R.C.E. 10759
- SET 1/2" REBAR & CAP, L.S. 5065

SYMBOLS SHOWN ON THIS COPY OF 13 O.S. 95 PER THIS LEE ID WERE NOT FOUND DURING OUR SURVEY