

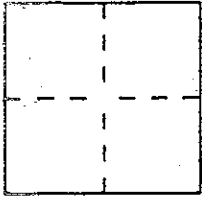
CORNER RECORD

Document Number A.P.N. 132-321-44

City of NOVATO

County of MARIN, California

Brief Legal Description PARCEL 1, PER 17 P.M. 32



CORNER TYPE

COORDINATES (Optional)

Government Corner  Control   
Meander  Property   
Rancho  Other   
Date of Survey 10-11-93

N. \_\_\_\_\_  
E. \_\_\_\_\_  
Zone \_\_\_\_\_ Datum \_\_\_\_\_  
Elev. \_\_\_\_\_

Corner — Left as found  Found and tagged  Established  Reestablished  Rebuilt

Identification and type of corner found: Evidence used to identify or procedure used to establish or reestablish the corner:

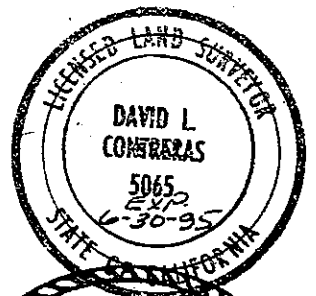
SEE REVERSE

A description of the physical condition of the monument as found and as set or reset: SEE REVERSE

SURVEYOR'S STATEMENT

This Corner Record was prepared by me or under my direction in conformance with the Land Surveyors' Act on 10-11-93

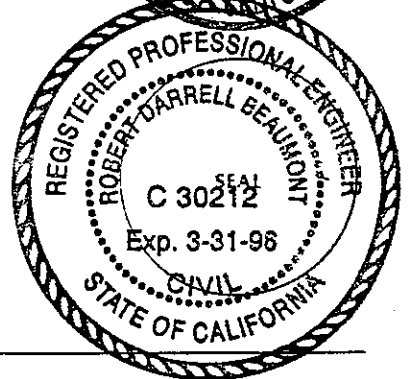
Signed David Montus L.S. or P.E. Number 5065



COUNTY SURVEYOR'S STATEMENT

This Corner Record was received 10-14-93 and examined and filed 10-15-93

Signed [Signature] Title DES

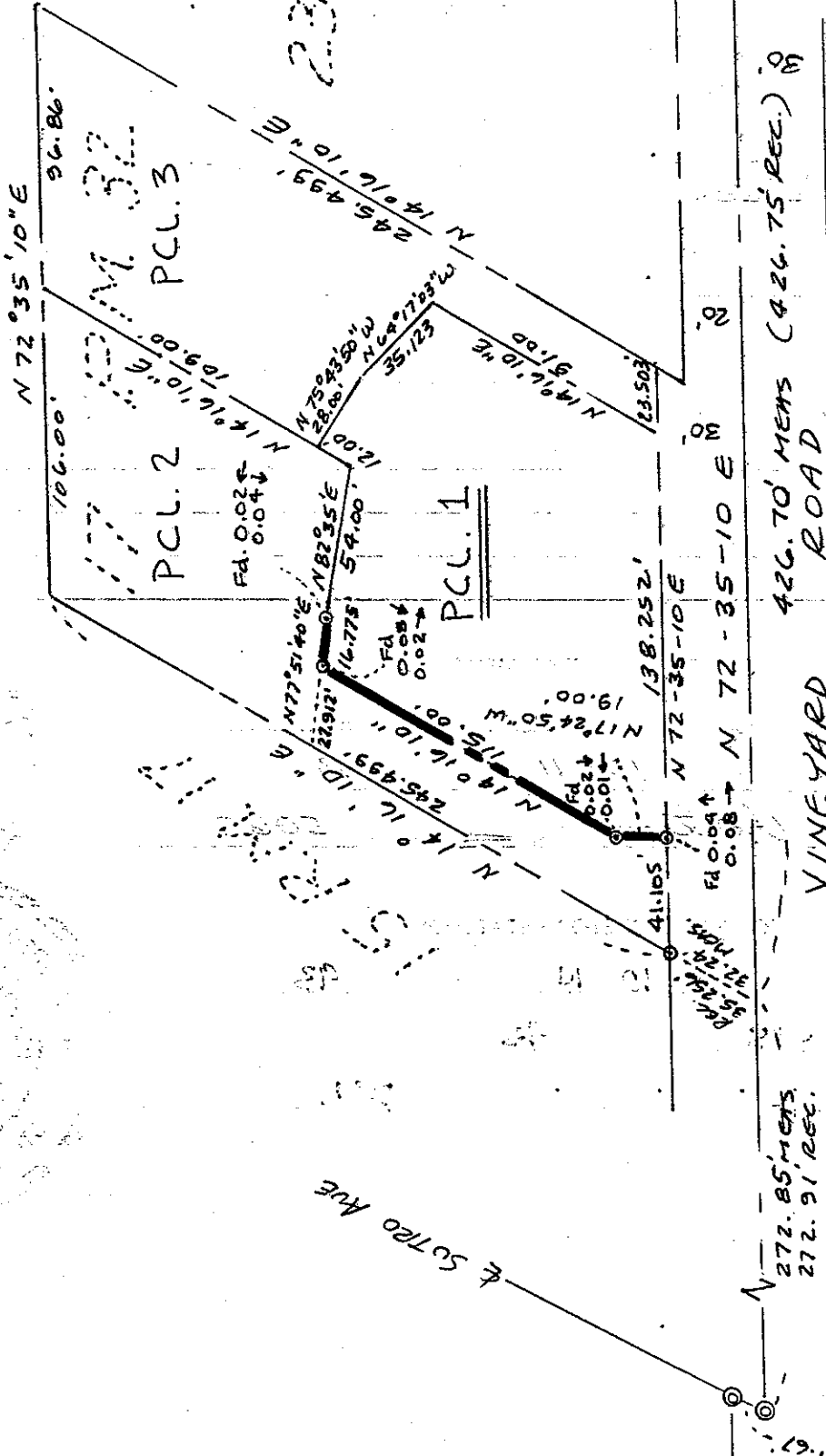


County Surveyor's Comment \_\_\_\_\_

14 RM. 30

23 RM. 32

23 RM. 42



⊙ = FD. CASED MONUMENT

⊙ = FD. 3/4" I.P. W/PLUG L.S. 3971

NOTE: SURVEYED ONLY THE BOLD LINE SHOWN ABOVE.