

CORNER RECORD

Assessor's Parcel No. 132-244-11

City of Novato County of Marin California

Brief Legal Description: Lot 94, 11 RM 84, Marin County Records.

CORNER TYPE

COORDINATES (Optional)

Lot in Existing Subdivision

None

Corners - Reestablished corners based on Christopher Court street monuments shown on 11 RM 84. One front corner found. Set remaining five corners.

Description of Monuments reset: One corner set as scribed "X" in concrete slab. Remaining monuments set are 3/4 inch iron pipes with tags - LS 4397.

SURVEYOR'S STATEMENT

This Corner Record was prepared by me or under my direction in conformance with the Land Surveyor's Act on July 28, 2010.

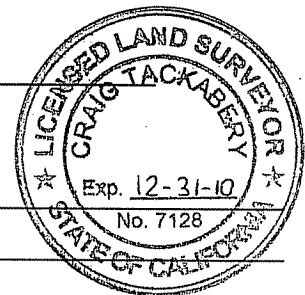


Signed Dale White LS 4397

COUNTY SURVEYOR'S STATEMENT

This Corner Record was received JULY 30, 2010, and examined and filed AUGUST 16, 2010.

Signed [Signature] Title COUNTY SURVEYOR

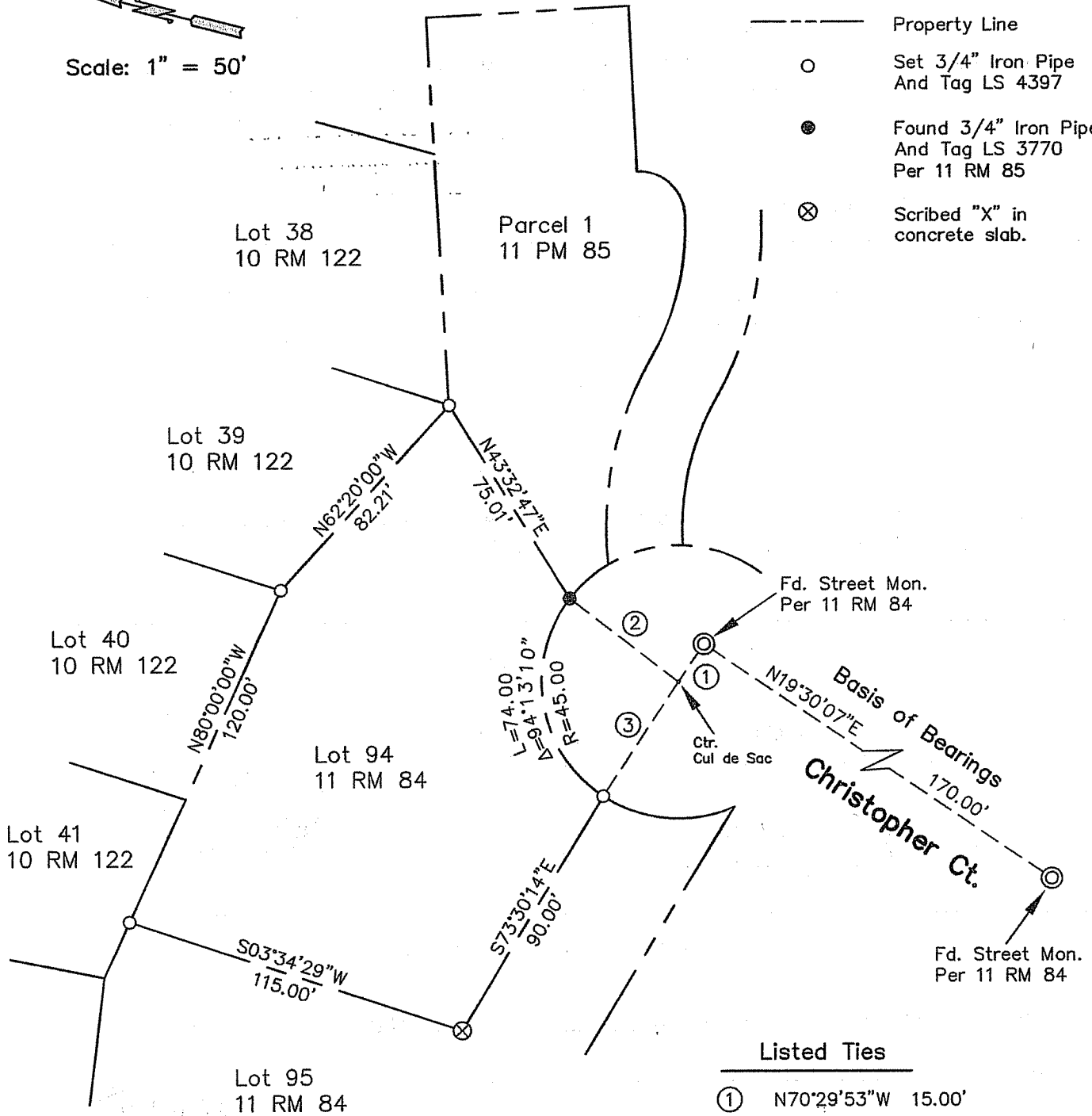


County Surveyor's Comments _____

Scale: 1" = 50'

Legend

- Property Line
- Set 3/4" Iron Pipe And Tag LS 4397
- Found 3/4" Iron Pipe And Tag LS 3770 Per 11 RM 85
- ⊗ Scribed "X" in concrete slab.



5 Christopher Court
Novato, CA
APN 132-244-11

Corner Record
Page 2 of 2

Property Corner Survey
Lot 94 11 RM 84
Marin County Records