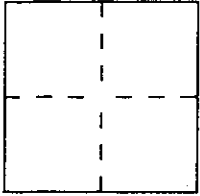


# CORNER RECORD

Document Number 132-223-62

City of NOVATO County of MARIN, California

Brief Legal Description PARCEL 2 PER PARCEL MAP RECORDED IN VOL. 14 AT PAGE 27.



### CORNER TYPE

Government Corner  Control   
Meander  Property   
Rancho  Other   
Date of Survey DECEMBER 1992.

### COORDINATES (Optional)

N. \_\_\_\_\_  
E. \_\_\_\_\_  
Zone \_\_\_\_\_ Datum \_\_\_\_\_  
Elev. \_\_\_\_\_

Corner — Left as found  Found and tagged  Established  Reestablished  Rebuilt

Identification and type of corner found: Evidence used to identify or procedure used to establish or reestablish the corner:

SEE SHEET 2

A description of the physical condition of the monument as found and as set or reset:

SEE SHEET 2

### SURVEYOR'S STATEMENT

This Corner Record was prepared by me or under my direction in conformance with the Land Surveyors' Act on JANUARY 6 1993.

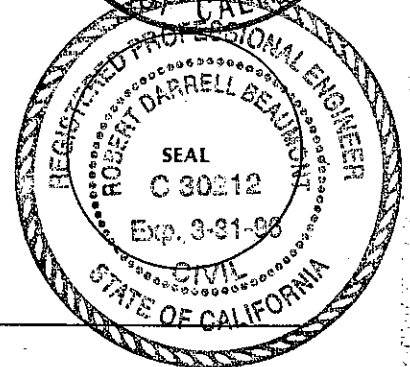
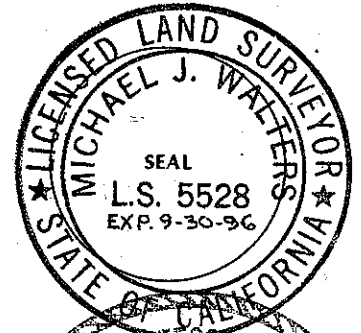
Signed Michael J. Walters L.S. or R.C.E. Number 5528  
(CHIEF OF SURVEY DIVISION)

### COUNTY SURVEYOR'S STATEMENT

This Corner Record was received 1-12 1993 and examined and filed 1-13 1993.

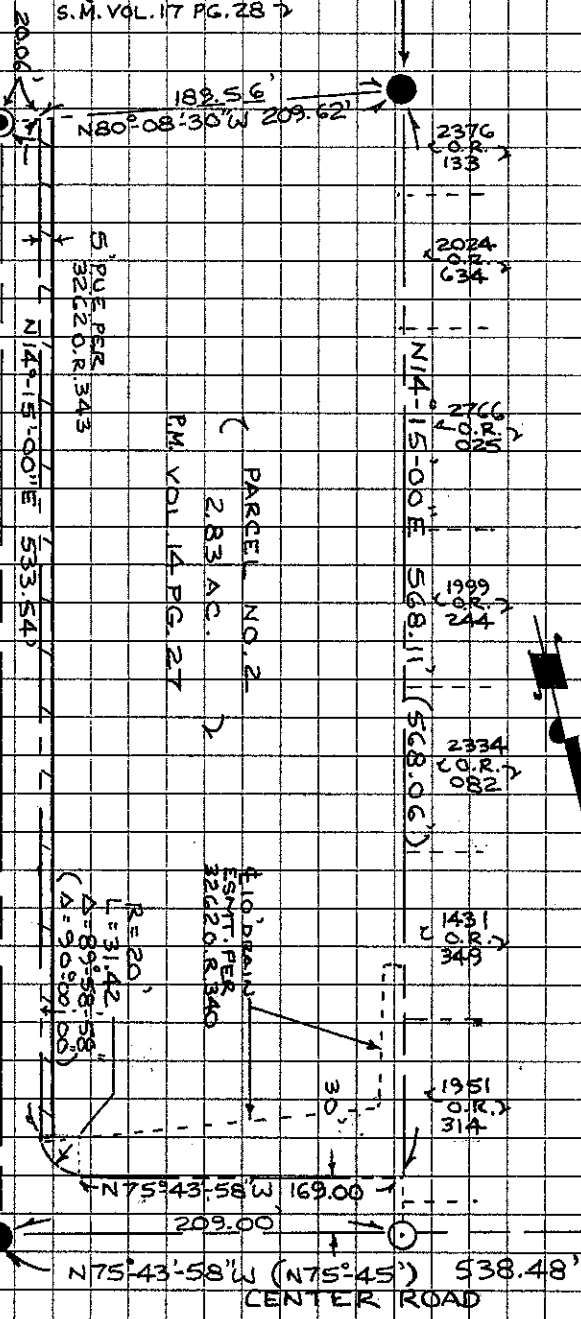
Signed [Signature] Title DCS

County Surveyor's Comment \_\_\_\_\_



FD 3/4" I.P. TAGGED  
RCE II, S4S PER  
PARCEL MAP VO  
14 AT PAGE 27

LOT 9  
S.M. VOL. 17 PG. 28



### LEGEND

- - FD BRASS CAP IN STREET WELL MON, STAMPED RCE II, S4S PER SUB MAP VOL 17 AT PAGE 28.
- - FOUND MONUMENT AS NOTED
- - SET I.P. TAGGED L.S. 5528

BASIS OF BEARINGS  
THE BASIS OF BEARINGS FOR THIS SURVEY IS IDENTICAL TO THAT AS SHOWN ALONG THE CENTERLINE OF KENDON LANE ON VOL. 14 PG. 27 OF PARCEL MAPS.

SCALE: 1"=100'