

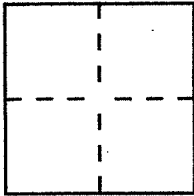
**CORNER RECORD**

Document Number APN 132-191-06

City of NOVATO

County of MARIN, California

Brief Legal Description LOT 6 OF "WALNUT PARK" RECORDED NOV. 12, 1952



**CORNER TYPE**

Government Corner  Control   
Meander  Property   
Rancho  Other   
Date of Survey APRIL 12, 2011

**COORDINATES**  
*(Optional)*

N. \_\_\_\_\_  
E. \_\_\_\_\_  
Zone \_\_\_\_\_ Datum \_\_\_\_\_  
Elev. \_\_\_\_\_

Corner — Left as found  Found and tagged  Established  Reestablished  Rebuilt

Identification and type of corner found: Evidence used to identify or procedure used to establish or reestablish the corner: FOUND MONUMENTS AS SHOWN ON "WALNUT PARK" RECORDED NOV. 12, 1952 IN VOL. 7 MAPS PG. 75

A description of the physical condition of the monument as found and as set or reset: SET 1/2" REBAR & CAP L.S. 7386

**SURVEYOR'S STATEMENT**

This Corner Record was prepared by me or under my direction in conformance with the Land Surveyors' Act on MAY 3, 2011 <sup>2011</sup>~~19~~

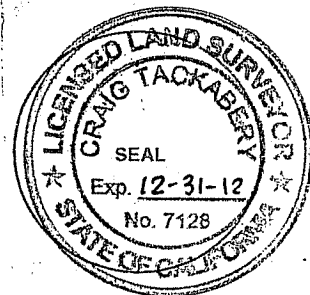
Signed *Gayle Wilson* (L.S.) or R.C.E. Number 7386



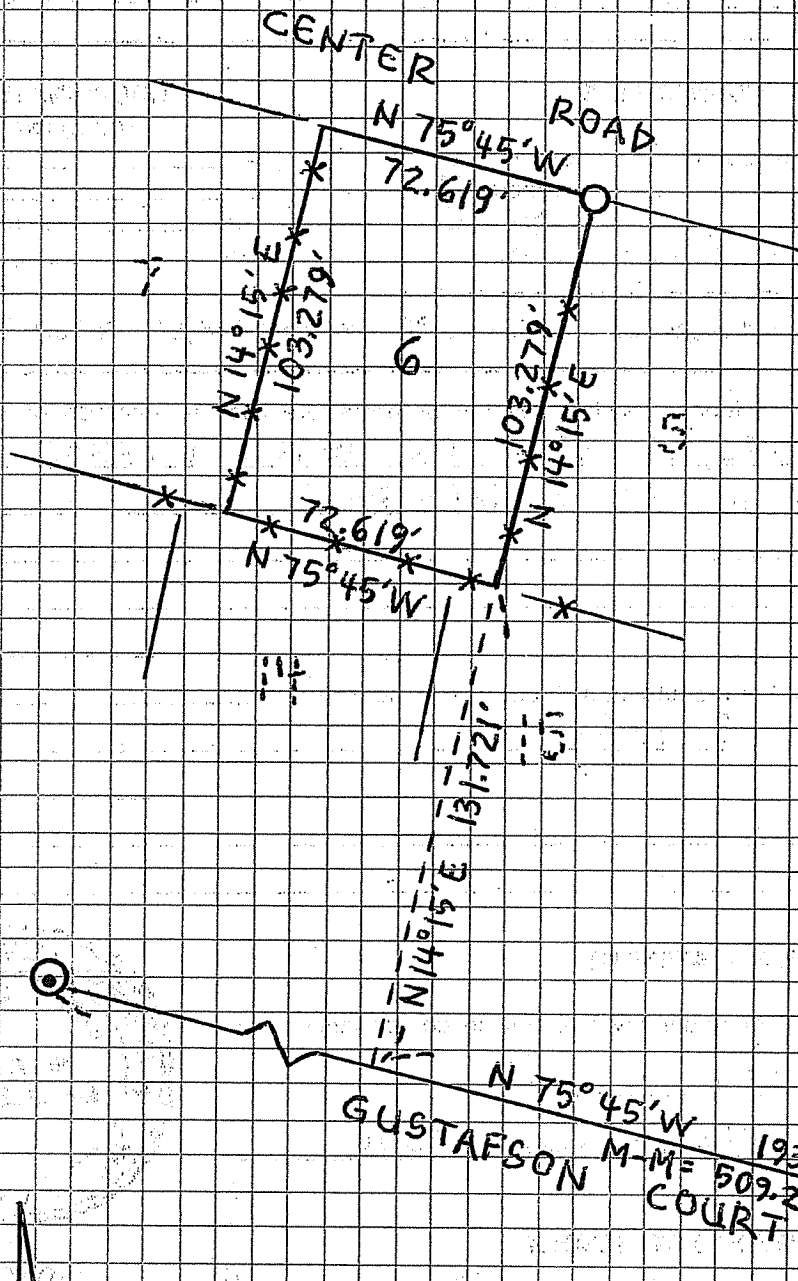
**COUNTY SURVEYOR'S STATEMENT**

This Corner Record was received JUNE 22, <sup>20</sup>~~19~~ and examined and filed JULY 13, <sup>20</sup>~~19~~

Signed \_\_\_\_\_ Title COUNTY SURVEYOR



County Surveyor's Comment \_\_\_\_\_



NOTE: THE W'LY, ELY,  
S'LY. FENCES OF  
LOT 6 ARE ON  
THE PROPERTY  
LINE(S).

NOTE: ALL BEARINGS  
USED ARE PER  
RECORD  
(VOL. 7 MAPS PG. 75)

N  
SCALE 1" = 50'

LEGEND

- ⊙ FND. EXISTING MON. PER RECORD
- SET 1/2" REBAR & CAP L.S. 7386
- x- EXISTING WOOD FENCE APPROX. 6' HIGH
- ( ) RECORD PER VOL. 7 MAPS PG. 75