

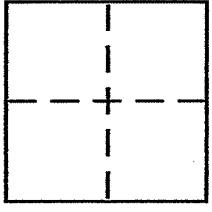
CORNER RECORD

Document Number 132.091.09

City of NOVATO

County of MARIN, California

Brief Legal Description Lot 9 MAP OF VINEYARD ESTATES 13 MAPS 34



CORNER TYPE

Government Corner Control
Meander Property
Rancho Other
Date of Survey 8/5/2010

COORDINATES (Optional)

N. _____
E. _____
Zone _____ NAD27 NAD83
NAD83 Epoch _____
Elev. _____
Vert. Datum: NGVD29 NAVD88
Meas. Units: Metric Imperial

Corner - Left as found Found and tagged Established Reestablished Rebuilt

Identification and type of corner found: Evidence used to identify or procedure used to establish or reestablish the corner:
Reestablish the westerly line of Lot 9, MAP OF VINEYARD estates, 13 MAPS 34 FROM EXISTING STREET monuments of record on Linda Court. See Reverse side for details. Points were set along said westerly line at random intervals.

A description of the physical condition of the monument as found and as set or reset: set 1/2" rebar with yellow plastic cap affixed to top of rebar & driven flush to surrounding grade. CAP IS stamped "Scranton, PL 5379". See Reverse side for specific locations.

SURVEYOR'S STATEMENT

This Corner Record was prepared by me or under my direction in conformance with the Land Surveyor's Act on AUGUST 9th 2010
Signed [Signature] P.L.S or R.C.E. No. PLS 5379



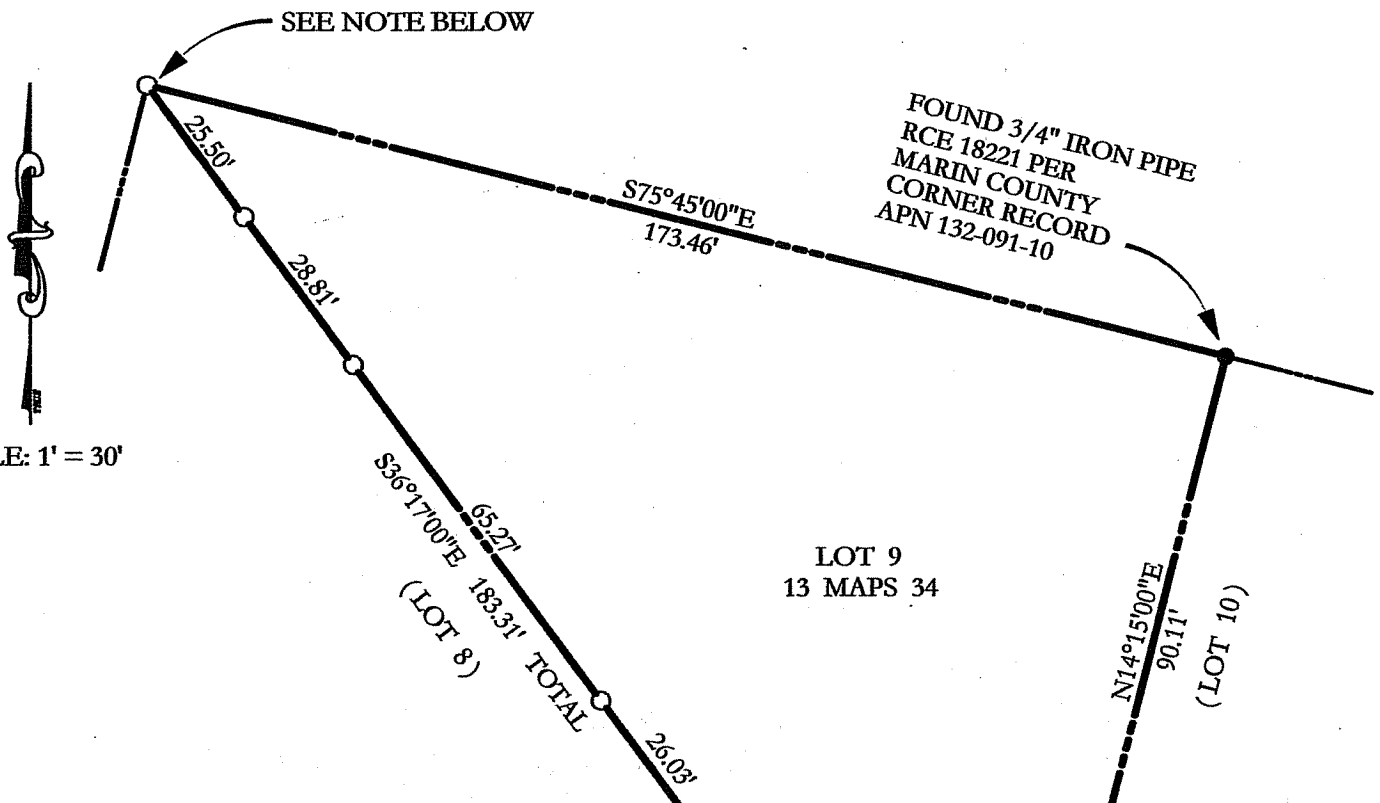
COUNTY SURVEYOR'S STATEMENT

This Corner Record was received AUGUST 11, 2010
and examined and filed SEPTEMBER 7, 2010
Signed [Signature] P.L.S or R.C.E. No. 7128
Title COUNTY SURVEYOR



County Surveyor's Comment _____

PREPARED BY: DJ SCRANTON SURVEYING PETALUMA, CA



FOUND 3/4" IRON PIPE
RCE 18221 PER
MARIN COUNTY
CORNER RECORD
APN 132-091-10

SCALE: 1' = 30'

NOTE:

FOUND ±4" OUTSIDE DIAMETER IRON PIPE WITH 2x2 HUB REMAINS INSIDE PIPE; SET 1/2" REBAR THROUGH HUB REMAINS TO PERPETUATE LOCATION. SEE R2, SHEET 2 OF 3, AS THE HUB LOCATION WAS ORIGINAL TO R1. THE CALCULATED POSITION OF THE POINT RESET IS S 22°00'50" W, 0.22' FROM THE CORNER POINT AS DETERMINED FROM THE MONUMENTS SHOWN HERON, BUT THIS MINOR DIFFERENCE IS NOT A MATERIAL DISCREPANCY IN THIS SURVEYOR'S OPINION.

LEGEND

- SET 1/2" REBAR/PLS CAP 5379
- STANDARD STREET MONUMENT PER R1
- R1 13 MAPS 34
- R2 16 MAPS 65

BASIS OF BEARINGS

TAKEN AS NORTH 22°22'00" EAST BETWEEN MONUMENTS AS SHOWN HEREON AND AS SAID MONUMENTS ARE SHOWN UPON R1

ALL DIMENSIONS GIVEN IN FEET AND DECIMALS THEREOF

NO EASEMENTS ARE SHOWN

