

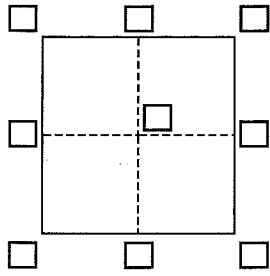
CORNER RECORD

APN 125-530-03
DPW# 18-017

Agency Index _____
Document Number 2014-27265

City of Unincorporated Marin County County of Marin, California

Brief Legal Description Lot 3 of Schlesinger Parcel Map, 26 PM 26



CORNER TYPE

- Government Corner Control
 Meander Property
 Rancho Other

Date of Survey January 10, 2018

COORDINATES (Optional)

- N. _____ E. _____
 Elevation _____
 Units Metric U.S. Survey Foot
 Horizontal Datum _____
 Zone _____ Epoch Date _____
 Vertical Datum _____
 Complies with Public Resources Code §§8801-8819
 Complies with Public Resources Code §§8890-8902

PLS Act Ref.: 8765(d) 8771 8773 Other:

Corner/Monument: Left as found Established Rebuilt Pre-Construction
 Found and tagged Reestablished Referenced Post-Construction

Narrative of corner identified and monument as found, set, reset, replaced, or removed:

See sheet #2 for description(s):

See sheet 2 for found and set monuments.

SURVEYOR'S STATEMENT

This Corner Record was prepared by me or under my direction in conformance with

the Professional Land Surveyors' Act on January 10, 2018

Signed Al Cornwell P.L.S. or R.C.E. No. 27577



COUNTY SURVEYOR'S STATEMENT

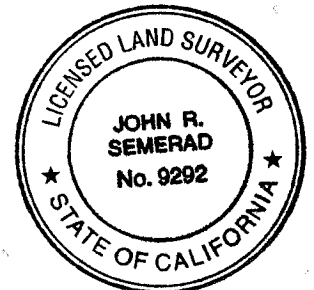
This Corner Record was received MARCH 27, 2018

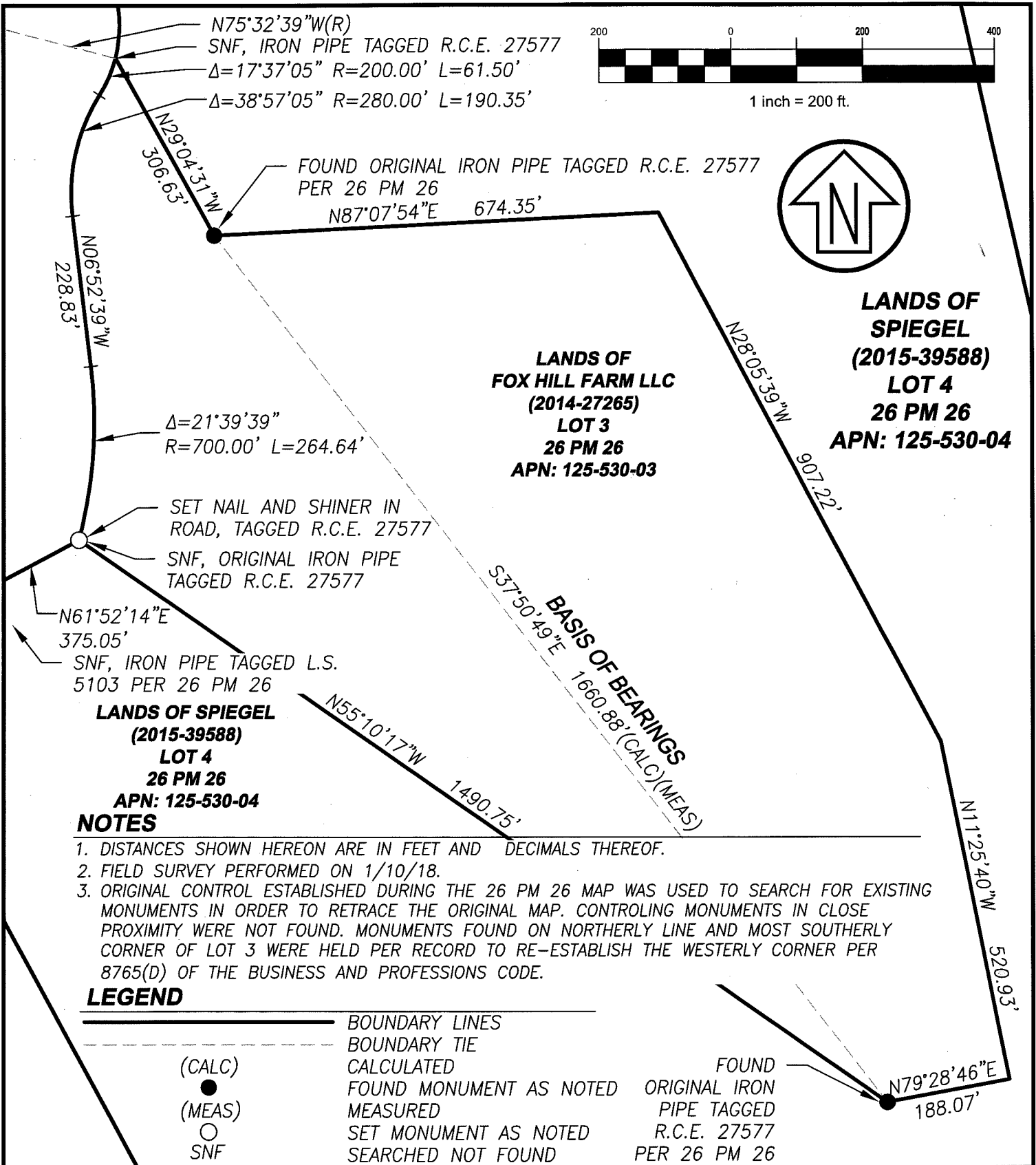
and examined and filed MAY 11, 2018

Signed John R. Semerad P.L.S. or R.C.E. No. 9292

Title DEPUTY C.S.

County Surveyor's Comment





NOTES

1. DISTANCES SHOWN HEREON ARE IN FEET AND DECIMALS THEREOF.
2. FIELD SURVEY PERFORMED ON 1/10/18.
3. ORIGINAL CONTROL ESTABLISHED DURING THE 26 PM 26 MAP WAS USED TO SEARCH FOR EXISTING MONUMENTS IN ORDER TO RETRACE THE ORIGINAL MAP. CONTROLLING MONUMENTS IN CLOSE PROXIMITY WERE NOT FOUND. MONUMENTS FOUND ON NORTHERLY LINE AND MOST SOUTHERLY CORNER OF LOT 3 WERE HELD PER RECORD TO RE-ESTABLISH THE WESTERLY CORNER PER 8765(D) OF THE BUSINESS AND PROFESSIONS CODE.

LEGEND

—————	BOUNDARY LINES
- - - - -	BOUNDARY TIE
(CALC)	CALCULATED
●	FOUND MONUMENT AS NOTED
(MEAS)	MEASURED
○	SET MONUMENT AS NOTED
SNF	SEARCHED NOT FOUND
●	FOUND ORIGINAL IRON PIPE TAGGED R.C.E. 27577 PER 26 PM 26

CSW ST2

CSW/Stuber-Stroeh Engineering Group, Inc.

Civil & Structural Engineers | Surveying & Mapping | Environmental Planning
Land Planning | Construction Management

45 Leveroni Court
Novato, CA 94949

tel: 415.883.9850
fax: 415.883.9835

http://www.cswst2.com

© 2013

Rev. -

Job No. 3182901

Date: 1/11/18

Scale: 1" = 200'

**LANDS OF FOX HILL FARM LLC
CORNER RECORD**

APN: 125-530-03

MARIN COUNTY

CALIFORNIA