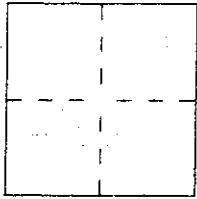


CORNER RECORD

Document Number 125-441-21City of NovatoCounty of Marin

California

Brief Legal Description Lot 31, Verissimo Valle Unit 2 (20 Maps 2), MCR

CORNER TYPE

Government Corner Control
 Meander Property
 Rancho Other
 Date of Survey July 13, 2000

COORDINATES (Optional)

N. _____
 E. _____
 Zone _____ Datum _____
 Elev. _____

Corner — Left as found Found and tagged Established Reestablished Rebuilt

Identification and type of corner found: Evidence used to identify or procedure used to establish or reestablish the corner:
Reestablish the Northeast corner of Lot 31, Verissimo Valle Unit 2, (20 Maps 2) from the existing standard street monuments of record on Oak Valley Drive that are depicted upon said referred map. See sketch on reverse side for further detail.

A description of the physical condition of the monument as found and as set or reset: _____
Set one half inch rebar with PLS cap affixed to top of rebar, cap embossed with "Scranton, PLS 5379". Top of rebar and cap driven flush with surrounding ground grade.

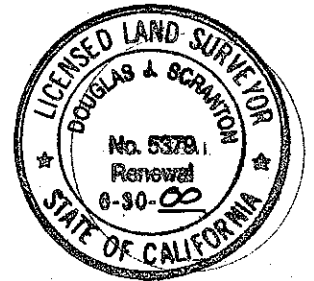
SURVEYOR'S STATEMENT

This Corner Record was prepared by me or under my direction in conformance with

the Land Surveyors' Act on July 14th ~~19~~ 2000

Signed [Signature] L.S. or R.C.E. Number PLS 5379

renewal 6/30/04



COUNTY SURVEYOR'S STATEMENT

This Corner Record was received July 17, 2000 ~~19~~ and examined

and filed July 19, 2000 ~~19~~

Signed [Signature] Title Deputy

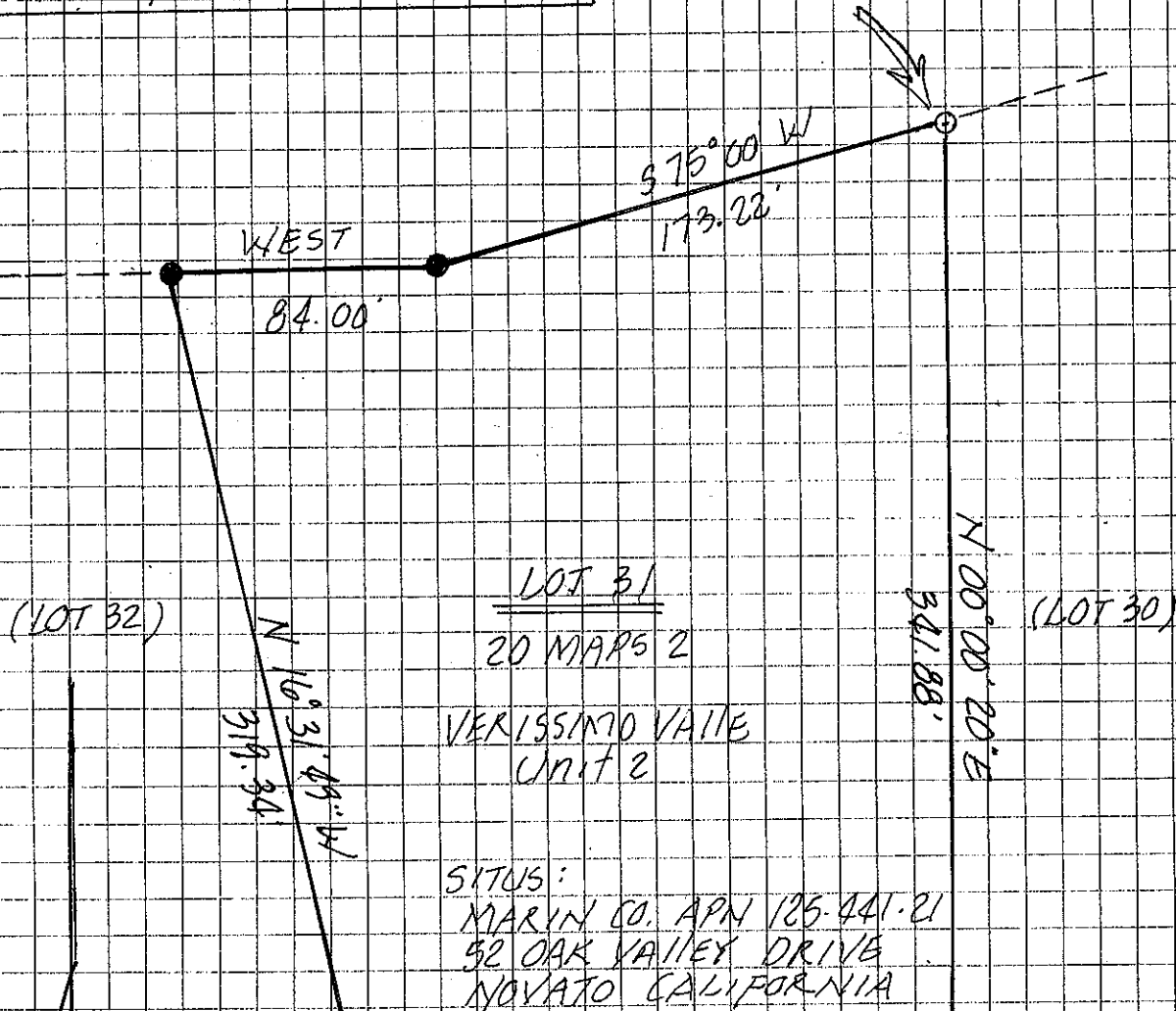


County Surveyor's Comment _____

PREPARED BY DJ SCRANTON SURVEYING 845 OLIVE AVE. SUITE 208 NOVATO, CA 94945 (415)897-2663

ALL DISTANCES SHOWN ARE
IN FEET & DECIMALS THEREOF.

NE CORNER LOT 31
THIS CORNER RECORDED



LOT 31
20 MAPS 2
VERISSIMO VALLE
UNIT 2

SITUS:
MARIN CO. APN 125-441-21
52 OAK VALLEY DRIVE
NOVATO CALIFORNIA

SCALE: 1" = 40'

LEGEND

- ⊙ STANDARD STREET MONUMENT
(BASIS OF BEARING) ~ N 79° 00' W
- EXISTING IRON PIPE
- SET 1/2 REBAR WITH PLS CAP 5379

