

CORNER RECORD

COUNTY OF Marin T. _____ R. _____ MERIDIAN _____ CALIFORNIA
 CORNER TYPE: GOVT. CORNER MEANDER RANCHO CONTROL OTHER A.P. 125-432-12
 CORNER IDENTIFICATION — DATE OF VISIT Sept. 24 1984



CORNER — LEFT AS FOUND FOUND AND TAGGED REESTABLISHED OBLITERATED CORNER REBUILT

PHYSICAL DESCRIPTION OF CORNER FOUND; EVIDENCE AND METHOD USED TO IDENTIFY OR REESTABLISH

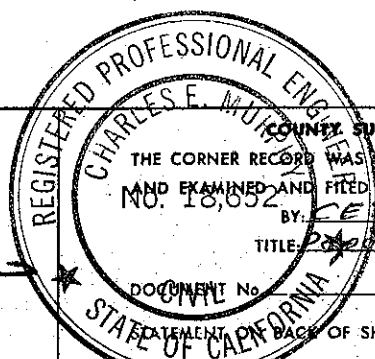
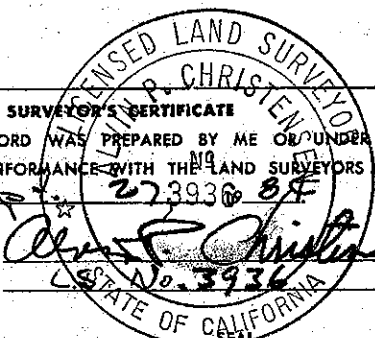
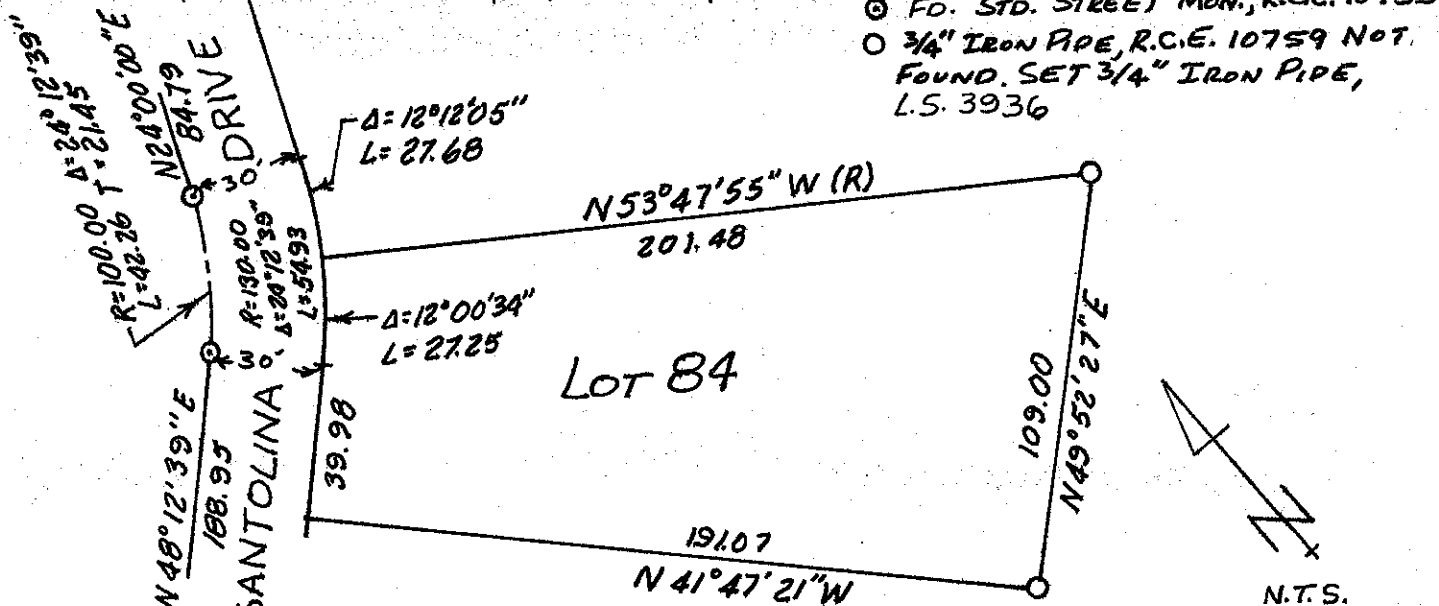
Original Record Map monuments not found at the southeasterly corners of Lot 84 as shown on that Record Map, San Marin East, filed in Book 18 of Record Maps at Page 20, Marin County Records. Bearings and distances of stated map were used to re-establish the positions of the obliterated corners.

PHYSICAL DESCRIPTION OF MONUMENTS, REBUILT OR PERPETUATED

Set 3/4" iron pipe, tag L.S. 3936 at the southeasterly corners of Lot 84 of said map above.

CALIFORNIA COORDINATE SYSTEM ORDER: FIRST SECOND THIRD
 STATIONS USED: NGS (USC & GS) STATE COUNTY OTHER STATION _____ STATION _____
 ZONE _____ ELEVATION _____ NORTHINGS (Y) _____ EASTINGS (X) _____

SKETCH: (Include reference tie or witness points, remarks and topo of area)



SURVEYOR'S CERTIFICATE
 THIS CORNER RECORD WAS PREPARED BY ME OR UNDER MY DIRECTION IN CONFORMANCE WITH THE LAND SURVEYORS ACT ON _____
 SIGNED: Christensen
 L.S. or R.C.E. No.: 3936

COUNTY SURVEYOR'S CERTIFICATE
 THE CORNER RECORD WAS RECEIVED 10-1 1984
 AND EXAMINED AND FILED 10-2 1984
 NO. 18,652 BY: CE Murphy
 TITLE: County Surveyor
 DOCUMENT No. _____
 STATEMENT ON BACK OF SHEET

YES NO