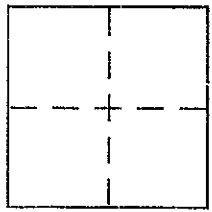


CORNER RECORD

Document Number 125-411-21

City of NOVATO County of MARIN, California

Brief Legal Description LOT 57 MAP OF SAN MARIN EAST (18M 20)



CORNER TYPE

Government Corner Control
Meander Property
Rancho Other
Date of Survey MAY 31, 2002

COORDINATES (Optional)

N. _____
E. _____
Zone _____ NAD27 NAD83
NAD83 Epoch _____
Elev. _____
Vert. Datum: NGVD29 NAVD88
Meas. Units: Metric Imperial

Corner -- Left as found Found and tagged Established Reestablished Rebuilt

Identification and type of corner found: Evidence used to identify or procedure used to establish or reestablish the corner:
REESTABLISH THE WESTERLY LOT LINE OF LOT 57
MAP OF SAN MARIN EAST (18 MAPS 20) FROM
EXISTING STANDARD STREET MONUMENTS OF SAID
RECORD MAP & AS SHOWN UPON SKETCH ON
REVERSE SIDE

A description of the physical condition of the monument as found and as set or reset: ALONG WESTERLY
LOT LINE SET AT RANDOM INTERVALS 1/2" REBAR WITH
15 CAP 5379 AFFIXED TO TOP & DRIVEN FLUSH TO
SURROUNDING GRADE. ALSO SET ON BOTH SIDE PROPERTY
LINE A LEAD PLUG & 15 TAG 5379 ON TOP OF THE CURB ON
THE PROLONGATION OF SAID SIDE LINES ONTO THE CURB LINE

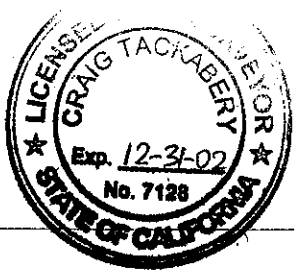
SURVEYOR'S STATEMENT

This Corner Record was prepared by me or under my direction in conformance with
the Land Surveyor's Act on July 2nd 2002
Signed [Signature] P.L.S or R.C.E. No. PS 5379
Renewal 6-30-04



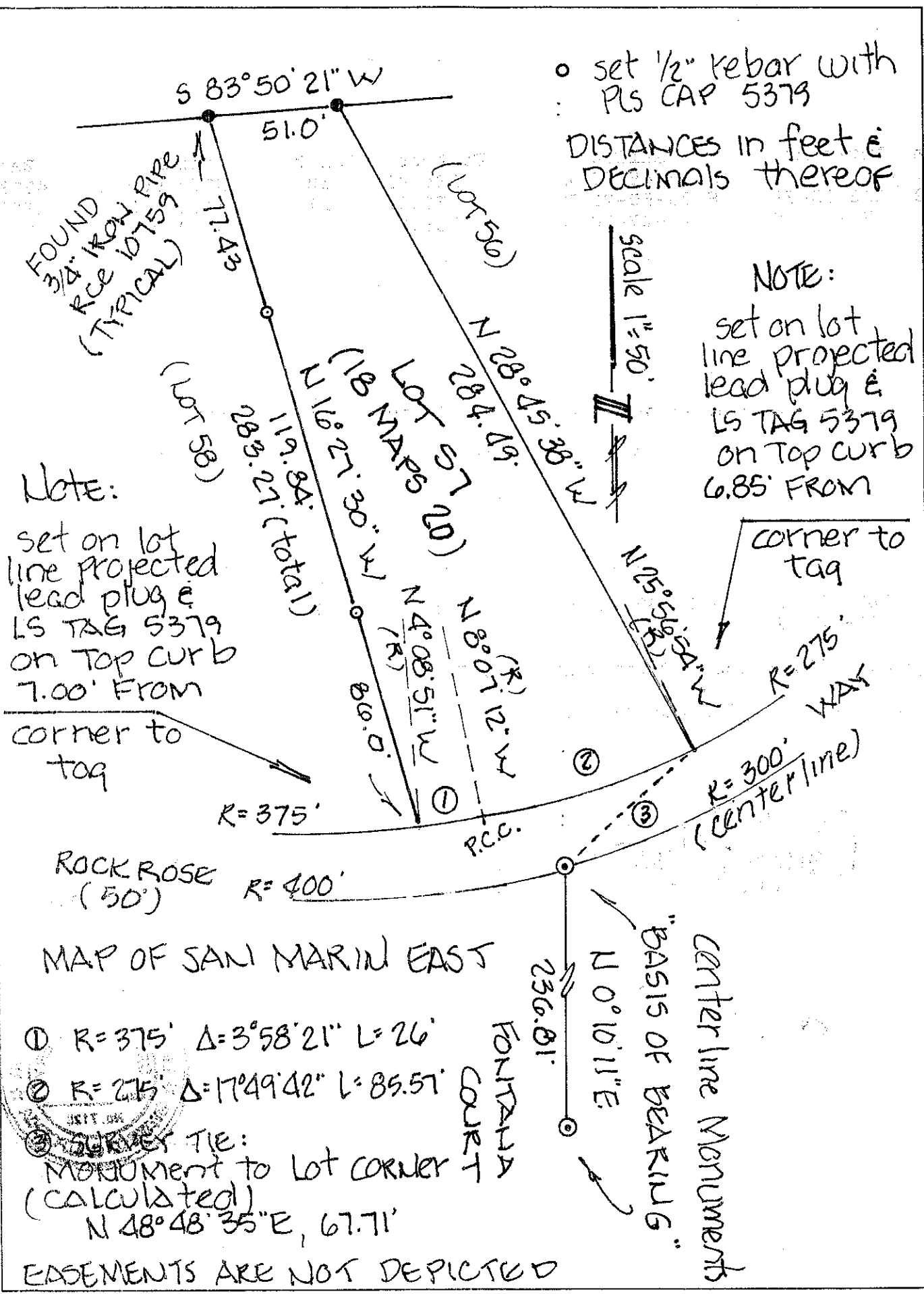
COUNTY SURVEYOR'S STATEMENT

This Corner Record was received JULY 8, 2002
and examined and filed JULY 16, 2002
Signed [Signature] P.L.S or R.C.E. No. 7128
Title DEPUTY



County Surveyor's Comment _____

Prepared by: DJ SCRANTON SURVEYING NOVATO, CALIFORNIA



○ set 1/2" rebar with
PLS CAP 5379
DISTANCES in feet &
DECIMALS thereof

NOTE:

set on lot
line projected
lead plug &
LS TAG 5379
on top curb
6.85' FROM

FOUND
3/4" IRON PIPE
RCE 10759
(TYPICAL)

Note:

set on lot
line projected
lead plug &
LS TAG 5379
on top curb
7.00' FROM

corner to
tag

corner to
tag

R=275'
WAX

R=300'
(centerline)

R=375'

ROCK ROSE
(50') R=400'

centerline monuments
"BASIS OF BEARING"
N 0°10'11"E
236.81'

MAP OF SAN MARIN EAST

① R=375' Δ=3°58'21" L=26'

② R=275' Δ=17°49'42" L=85.51'

③ SURVEY TIE:
MONUMENT to Lot CORNER
(CALCULATED)
N 48°48'35"E, 67.71'

EASEMENTS ARE NOT DEPICTED