

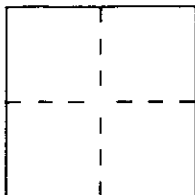
# CORNER RECORD

Document Number \_\_\_\_\_

City of VICINITY OF NOVATO

County of MARIN, California

Brief Legal Description LOT 25 PER 19 R.M.S



### CORNER TYPE

- Government Corner
- Meander
- Rancho
- Date of Survey 1-16-95
- Control
- Property
- Other

### COORDINATES (Optional)

N. \_\_\_\_\_  
 E. \_\_\_\_\_  
 Zone \_\_\_\_\_ Datum \_\_\_\_\_  
 Elev. \_\_\_\_\_

Corner — Left as found  Found and tagged  Established  Reestablished  Rebuilt

Identification and type of corner found: Evidence used to identify or procedure used to establish or reestablish the corner:

SEE OVER

A description of the physical condition of the monument as found and as set or reset:

SEE OVER

### SURVEYOR'S STATEMENT

This Corner Record was prepared by me or under my direction in conformance with the Land Surveyors' Act on FEBRUARY 3 1995

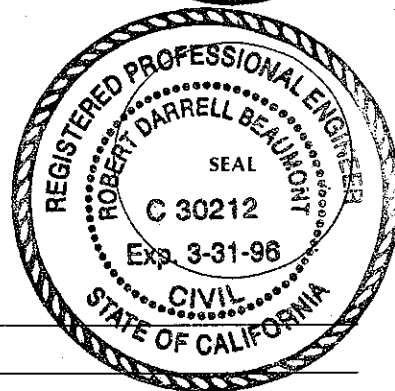
Signed David Contreras L.S. or R.C.E. Number 5065



### COUNTY SURVEYOR'S STATEMENT

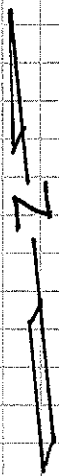
This Corner Record was received FEBRUARY 6 1995 and examined and filed 2-7 1995.

Signed [Signature] Title DES

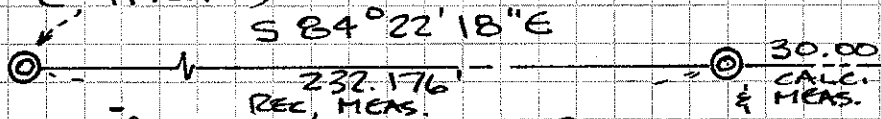


County Surveyor's Comment \_\_\_\_\_

SCALE  
1" = 30'



FD. STANDARD  
STREET MONUMENT  
(TYPICAL)



MAE COURT  
S 84° 22' 18" E  
83.635'

SET 3/4" IRON  
PIPE W/  
PLASTIC PLUG  
L.S. 5065

Fd. 3/4"  
IRON PIPE  
W/ TAG  
RCE 18221  
N 73° 50' E  
0.34'

LOT  
24

LOT  
25

LOT  
26

S 5° 37' 42" W  
104.698'

N 5° 37' 42" E  
104.698'

SET NAIL & TAG  
L.S. 5065  
IN 4" X 4"  
FENCE POST

S 84° 22' 18" E  
83.635'

S 70° 22' E  
0.23'

Fd. 3/4" IRON  
PIPE W/ TAG  
RCE 18221