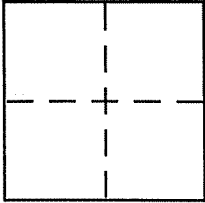


CORNER RECORD

Document Number APN 125-294-02
County of MARIN, California

VICINITY City of NOVATO

Brief Legal Description LOT 288 PER 13 R.M. 40



CORNER TYPE

Government Corner Control
Meander Property
Rancho Other
Date of Survey 7-25-07

COORDINATES (Optional)

N. _____
E. _____
Zone _____ NAD27 NAD83
NAD83 Epoch _____
Elev. _____
Vert. Datum: NGVD29 NAVD88
Meas. Units: Metric Imperial

Corner - Left as found Found and tagged Established Reestablished Rebuilt

Identification and type of corner found: Evidence used to identify or procedure used to establish or reestablish the corner:

= SEE OVER =

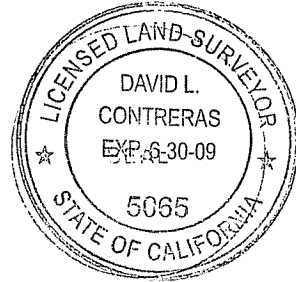
A description of the physical condition of the monument as found and as set or reset:

= SEE OVER =

SURVEYOR'S STATEMENT

This Corner Record was prepared by me or under my direction in conformance with the Land Surveyor's Act on 3-26 2008

Signed David Contreras P.L.S. or R.C.E. No. 5065



COUNTY SURVEYOR'S STATEMENT

This Corner Record was received MARCH 31, 2008

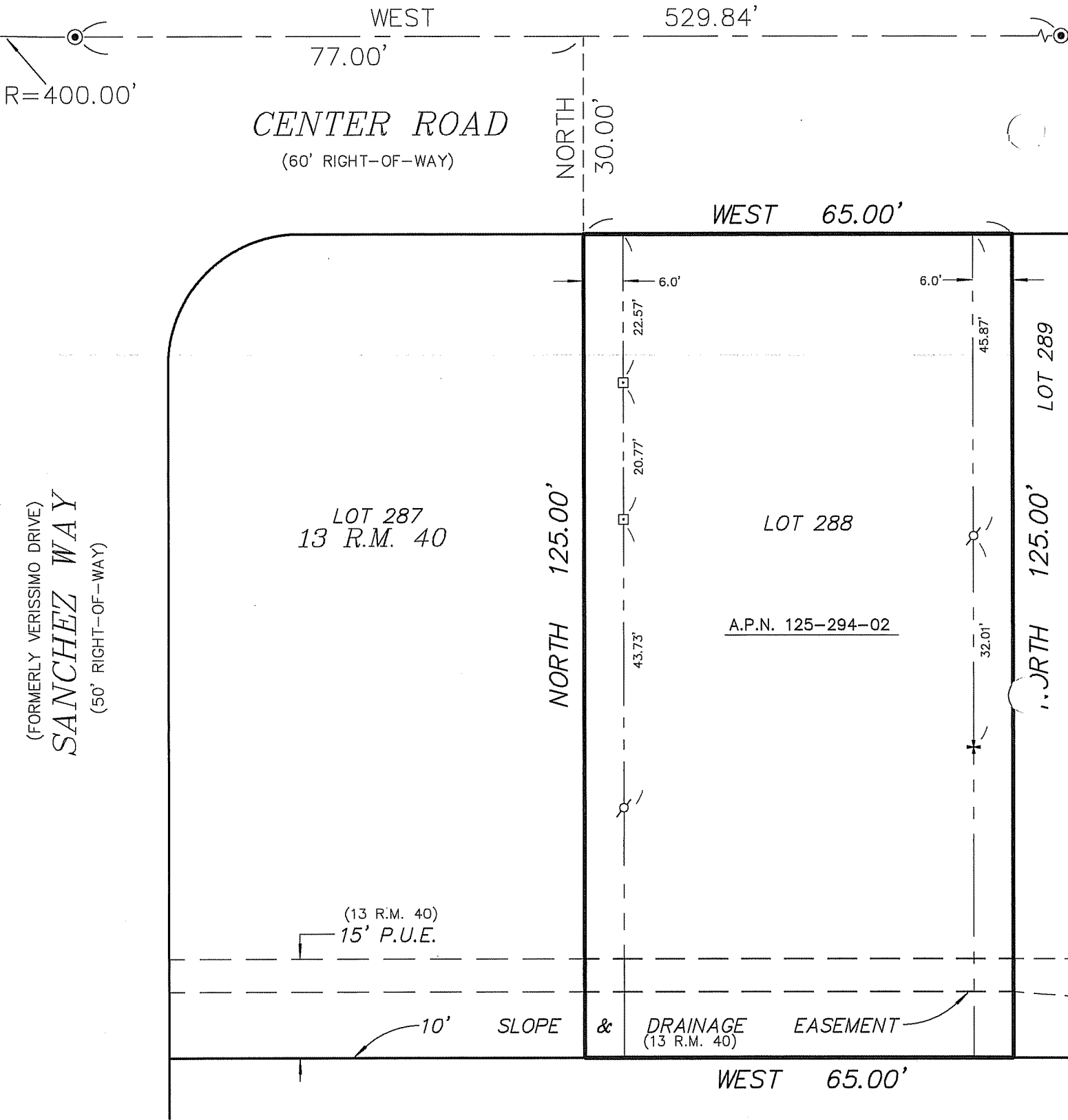
and examined and filed MAY 8, 2008

Signed _____ P.L.S. or R.C.E. No. 7128

Title COUNTY SURVEYOR



County Surveyor's Comment _____



NOTES

1) ONLY EASEMENTS AS SHOWN ON 13 R.M. 40 ARE SHOWN HEREON.

LEGEND

- P.U.E. = PUBLIC UTILITY EASEMENT
- ☐ = SET HUB AND TAG, LS 5065
- ⊗ = SET NAIL & TAG, LS 5065, ON WOODEN FENCE
- ⊙ = FOUND STANDARD STREET MONUMENT
- ⊕ = SET SCRIBED CROSS

