

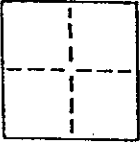
CORNER RECORD

1 of 2

COUNTY OF MARIN T. _____ R. _____ SEC. _____ M. D. B. 8 MERIDIAN CALIFORNIA

CORNER TYPE: GOV'T. CORNER MEANDER RANCHO CONTROL OTHER SUBDIVISION

CORNER IDENTIFICATION — DATE OF VISIT December 6, 1989



XP# 125-291-10

CORNER — LEFT AS FOUND FOUND AND TAGGED REESTABLISHED OBLITERATED CORNER REBUILT

PHYSICAL DESCRIPTION OF CORNER FOUND; EVIDENCE AND METHOD USED TO IDENTIFY OR REESTABLISH

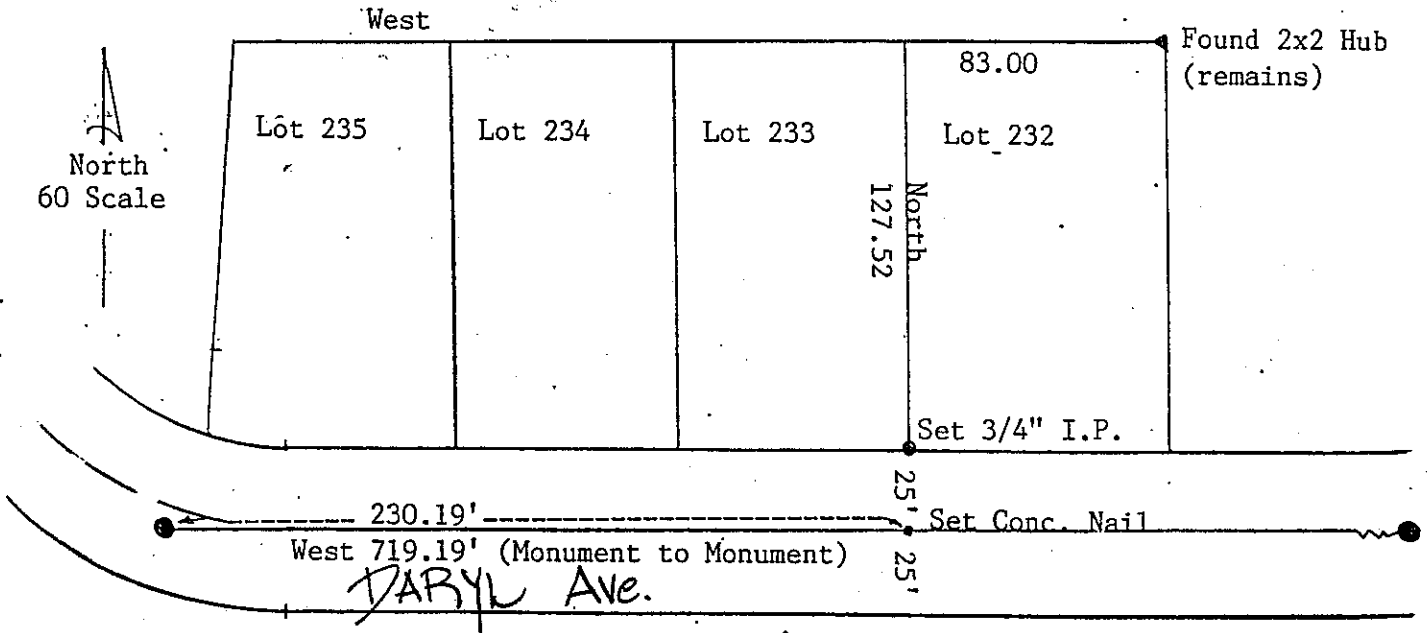
Used Street monuments on Daryl Avenue, Sheet 6 of 7, "Map of Pleasant Valley Unit 5", recorded Book 13 Page 40 of Maps, Marin, County, Ca.

PHYSICAL DESCRIPTION OF MONUMENTS REBUILT OR PERPETUATED

Set 3/4" Iron Pipe, tagged LS 5103

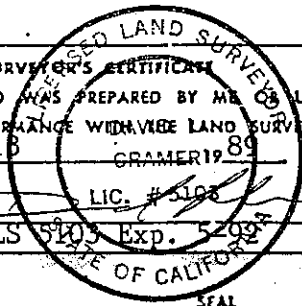
CALIFORNIA COORDINATE SYSTEM ORDER: FIRST SECOND THIRD
STATIONS USED: NGS (USC & GS) STATE COUNTY OTHER STATION _____ STATION _____
ZONE _____ ELEVATION _____ NORTHINGS (Y) _____ EASTINGS (X) _____

SKETCH: (Include reference tie or witness points, remarks and topo of area)



THIS CORNER RECORD WAS PREPARED BY ME UNDER MY DIRECTION IN CONFORMANCE WITH THE LAND SURVEYORS ACT ON December 18 1989

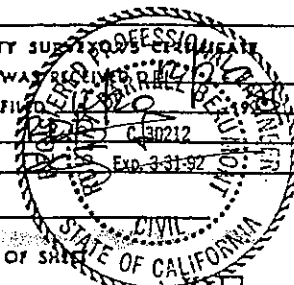
SIGNED: _____
L.S. or R.C.E. No. _____



COUNTY SURVEYOR'S CERTIFICATE
THE CORNER RECORD WAS RECEIVED, EXAMINED AND FILED IN THE PUBLIC RECORDS OFFICE OF MARIN COUNTY, CALIFORNIA, ON 12/18/89

BY: _____
TITLE: _____

DOCUMENT No. _____
STATEMENT ON BACK OF SHEET NO



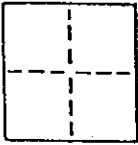
CORNER RECORD

2 of 2

COUNTY OF MARIN T. _____ R. _____ SEC. _____ M. D. B. 8 MERIDIAN CALIFORNIA

CORNER TYPE: GOV'T. CORNER MEANDER RANCHO CONTROL OTHER SUBDIVISION

CORNER IDENTIFICATION — DATE OF VISIT December 6, 19 89



CORNER — LEFT AS FOUND FOUND AND TAGGED REESTABLISHED OBLITERATED CORNER REBUILT

PHYSICAL DESCRIPTION OF CORNER FOUND; EVIDENCE AND METHOD USED TO IDENTIFY OR REESTABLISH

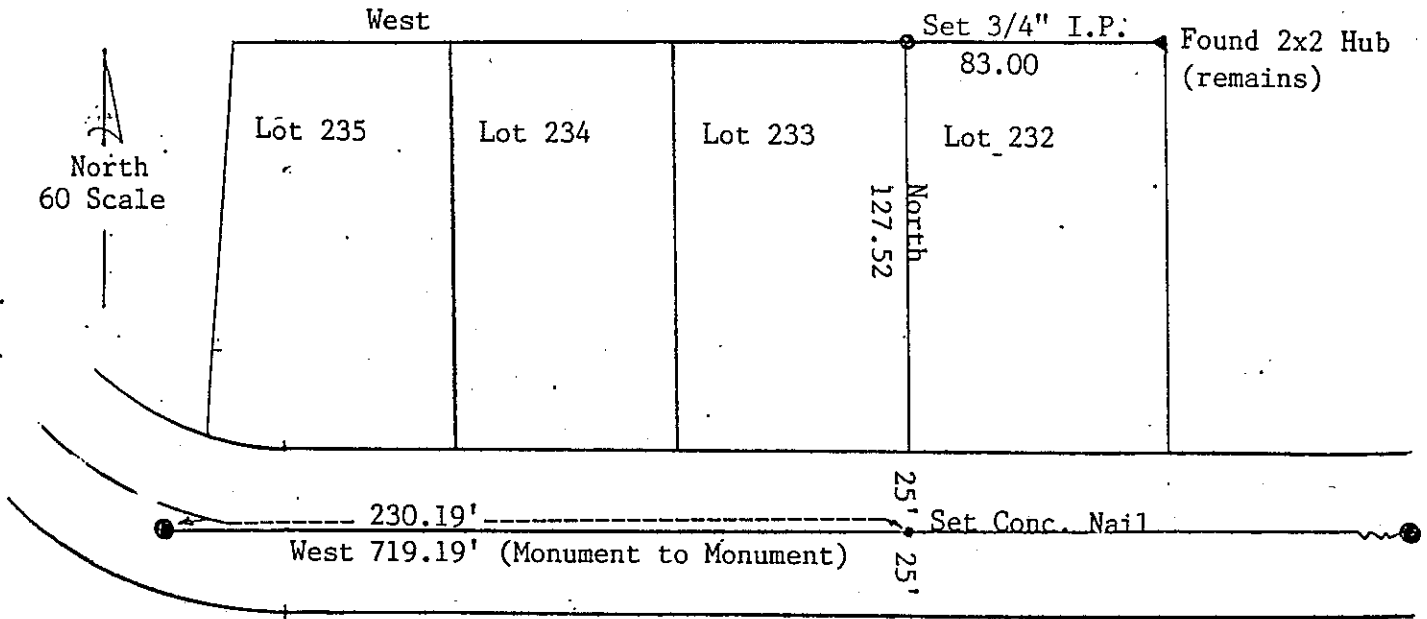
Used Street monuments on Daryl Avenue, Sheet 6 of 7, "Map of Pleasant Valley Unit 5", recorded Book 13 Page 40 of Maps, Marin, County, Ca.

PHYSICAL DESCRIPTION OF MONUMENTS REBUILT OR PERPETUATED

Set 3/4" Iron Pipe, tagged LS 5103

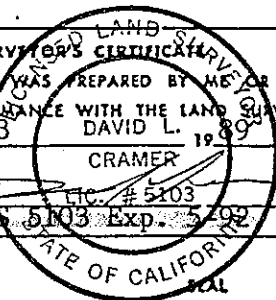
CALIFORNIA COORDINATE SYSTEM ORDER: FIRST SECOND THIRD
STATIONS USED: NGS (USC & GS) STATE COUNTY OTHER STATION _____ STATION _____
ZONE _____ ELEVATION _____ NORTHINGS (Y) _____ EASTINGS (X) _____

SKETCH: (Include reference tie or witness points, remarks and topo of area)



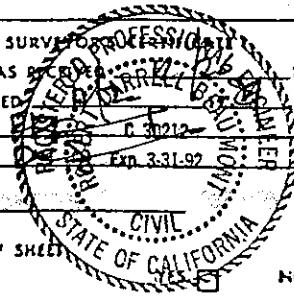
SURVEYOR'S CERTIFICATE
THIS CORNER RECORD WAS PREPARED BY ME OR UNDER MY DIRECTION IN CONFORMANCE WITH THE LAND SURVEYORS ACT ON December 3 19 89
DAVID L. CRAMER

SIGNED: _____
L.S. or R.C.E. No. _____



COUNTY SURVEYOR PROFESSIONAL
THE CORNER RECORD WAS RECEIVED AND EXAMINED AND FILED
BY: _____
TITLE: _____

DOCUMENT No. _____
STATEMENT ON BACK OF SHEET _____



NO