

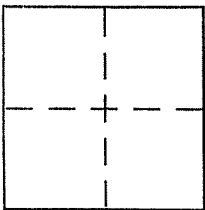
CORNER RECORD

Document Number 125.261.31

City of NOVATO

County of MARIN, California

Brief Legal Description LOT 93, 12 MAPS 38 & PORTION OF LOT 93 12 MAPS 38



CORNER TYPE

Government Corner Control
Meander Property
Rancho Other
Date of Survey 2/23/2005

COORDINATES (Optional)

N. _____
E. _____
Zone _____ NAD27 NAD83
NAD83 Epoch _____
Elev. _____
Vert. Datum: NGVD29 NAVD88
Meas. Units: Metric Imperial

Corner - Left as found Found and tagged Established Reestablished Rebuilt

Identification and type of corner found: Evidence used to identify or procedure used to establish or reestablish the corner:

REESTABLISH THE INTERSECTION OF THE TWO COURSES
N 47° 26' W, 171.17' & N 26° 23' 33" E, 76.33' AS DEPICTED
UPON 5 PM 9. REESTABLISH FROM EXISTING ORIGINAL
MONUMENTATION OF 5 PM 9, REFER TO SHEET 2 ON
REVERSE SIDE FOR DETAILS

A description of the physical condition of the monument as found and as set or reset: set lead plug

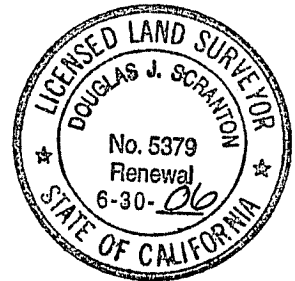
& tag LS 5379 IN CONCRETE DRIVEWAY. Note:
THIS POINT IS A REPLACEMENT OF A LEAD PLUG &
TAG LS 5379 SET ON OCTOBER 31, 2001 & REFERENCED
BY A NOVEMBER 2001 CORNER RECORD BY THIS OFFICE

SURVEYOR'S STATEMENT

This Corner Record was prepared by me or under my direction in conformance with

the Land Surveyor's Act on FEBRUARY 25 2005

Signed Douglas J. Scranton P.L.S. or R.C.E. No. PLS 5379



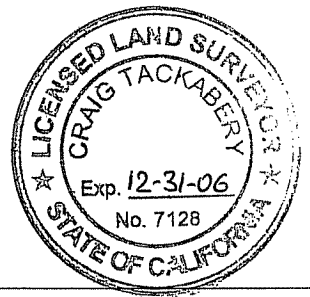
COUNTY SURVEYOR'S STATEMENT

This Corner Record was received MARCH 7, 2005

and examined and filed MARCH 15, 2005

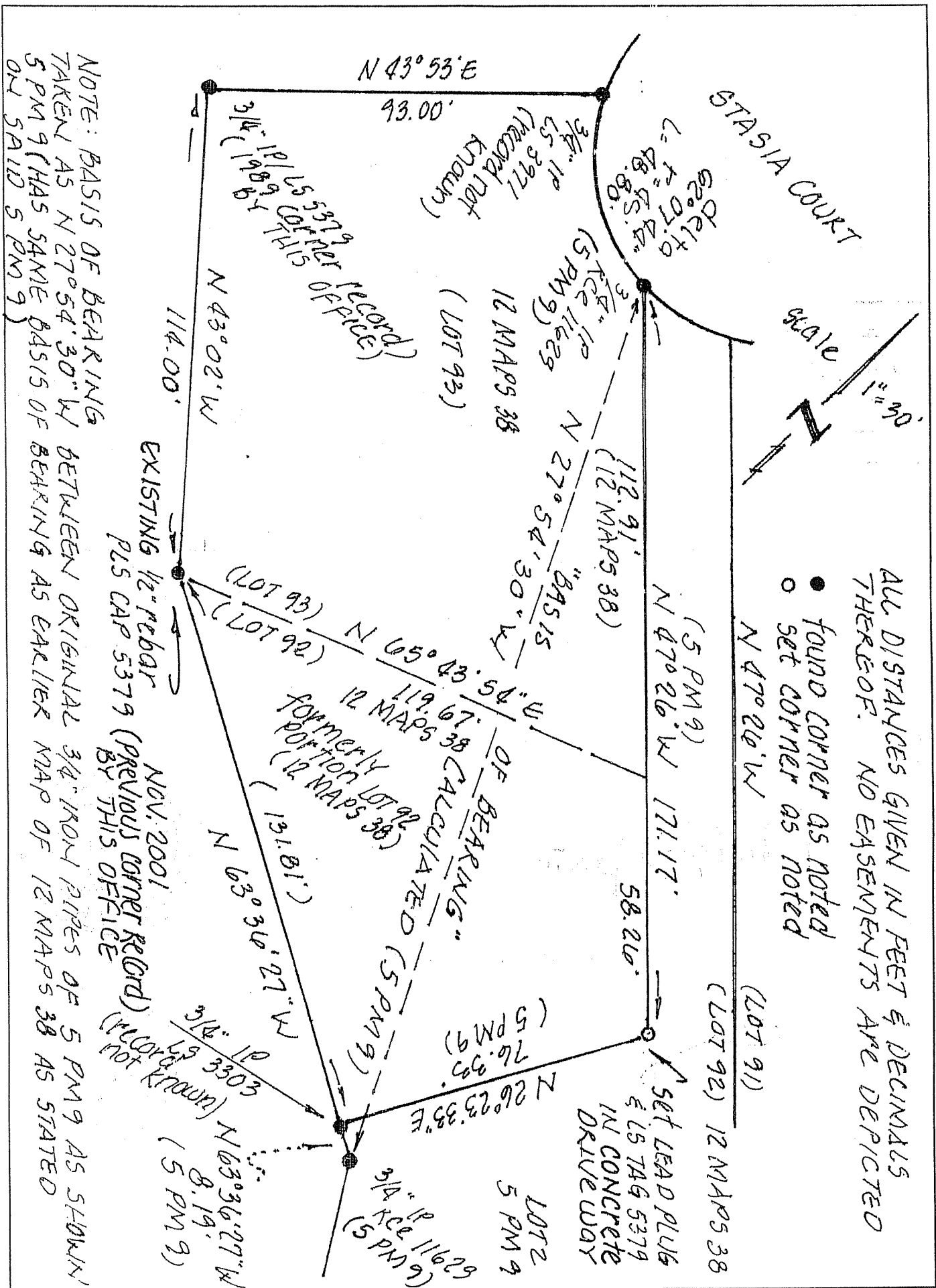
Signed _____ P.L.S. or R.C.E. No. 7128

Title COUNTY SURVEYOR



County Surveyor's Comment _____

Prepared by: DJ SCRANTON SURVEYING NOVATO, CA



NOTE: BASIS OF BEARING TAKEN AS $N 27^{\circ} 54' 30" W$ 5 PM 9 (HAS SAME BASIS OF BEARING AS EARLIER MAP OF 12 MAPS 38 AS STATED ON SAID 5 PM 9)

ALL DISTANCES GIVEN IN FEET & DECIMALS THEREOF. NO EASEMENTS ARE DEPICTED

- FOUND CORNER AS NOTED
- SET CORNER AS NOTED