

CORNER RECORD

1 of 2

COUNTY OF MAJIN T. \_\_\_\_\_ R. \_\_\_\_\_ MERIDIAN \_\_\_\_\_ CALIFORNIA

CORNER TYPE: GOVT. CORNER  MEANDER  RANCHO  CONTROL  OTHER

CORNER IDENTIFICATION — DATE OF VISIT \_\_\_\_\_ 19\_\_\_\_



N/A

CORNER — LEFT AS FOUND  FOUND AND TAGGED  REESTABLISHED OBLITERATED CORNER  REBUILT

PHYSICAL DESCRIPTION OF CORNER FOUND; EVIDENCE AND METHOD USED TO IDENTIFY OR REESTABLISH

N/A

PHYSICAL DESCRIPTION OF MONUMENTS, REBUILT OR PERPETUATED

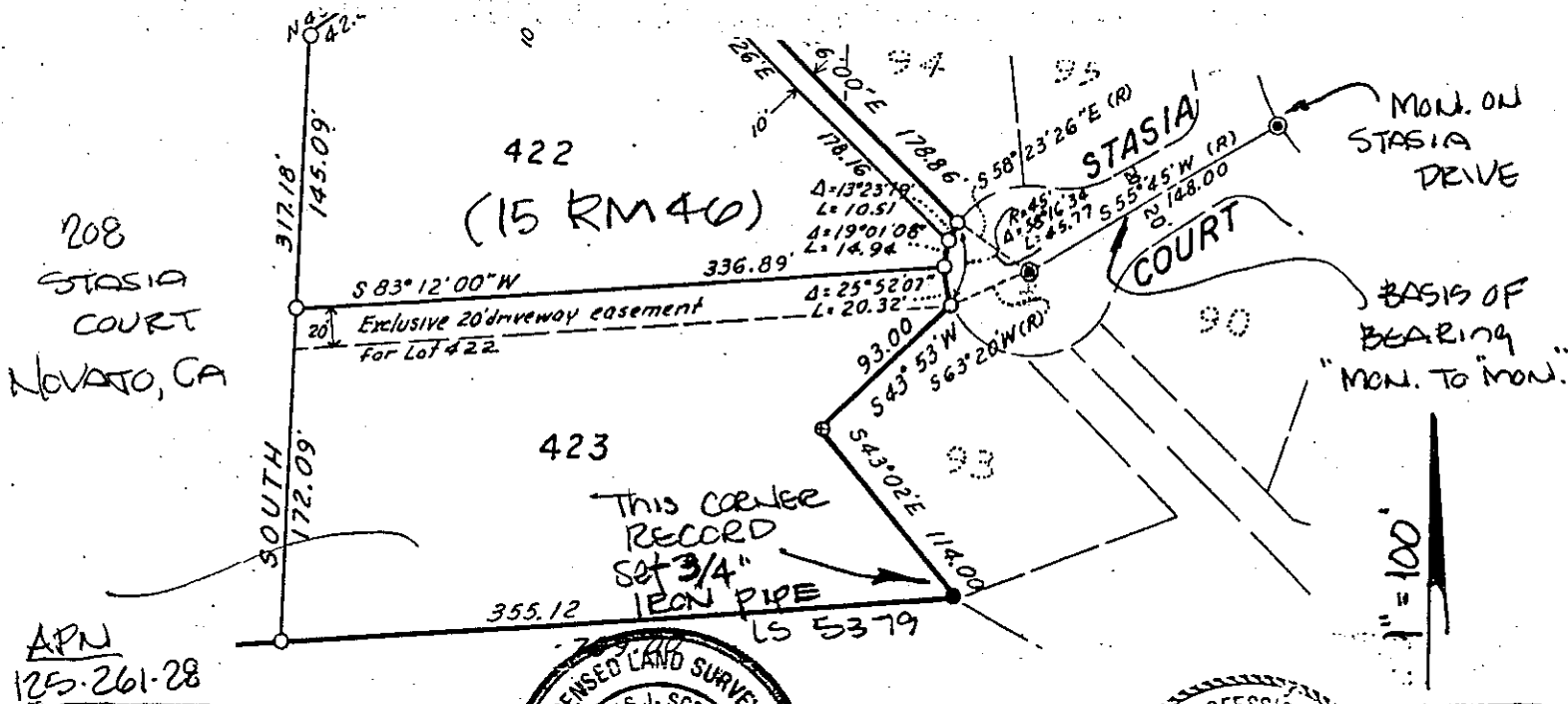
LOT 423 - MAP OF Pleasant Valley Unit 7 (15 RM 46)  
 SET PROPERTY CORNER OF RECORD AS SHOWN BELOW

CALIFORNIA COORDINATE SYSTEM ORDER: FIRST  N/A SECOND  THIRD

STATIONS USED: NGS (USC & GS)  STATE  COUNTY  OTHER  STATION \_\_\_\_\_ STATION \_\_\_\_\_

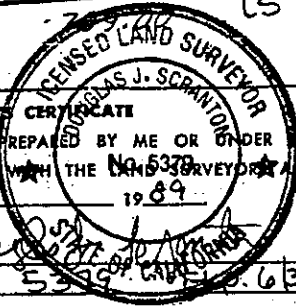
ZONE \_\_\_\_\_ ELEVATION \_\_\_\_\_ NORTHINGS (Y) \_\_\_\_\_ EASTINGS (X) \_\_\_\_\_

SKETCH: (Include reference tie or witness points, remarks and topo of area)



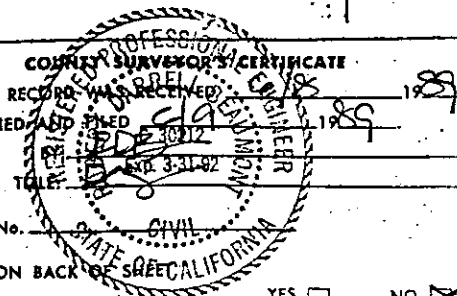
208  
 STASIA  
 COURT  
 NOVATO, CA

APN  
 125-261-28



SURVEYOR'S CERTIFICATE  
 THIS CORNER RECORD WAS PREPARED BY ME OR UNDER MY DIRECTION IN CONFORMANCE WITH THE LAND SURVEYOR ACT ON June 6 1989

SIGNED: Douglas J. Scranion  
 L.S. or R.C.E. No. LS 5378 DATE 6/30/92



COURT PROFESSIONAL ENGINEER'S CERTIFICATE  
 THE CORNER RECORD WAS RECEIVED AND EXAMINED AND FOUND TO BE CORRECT AND TRUE ON 6/18 1989

DOCUMENT NO. \_\_\_\_\_  
 STATEMENT ON BACK OF THIS RECORD YES  NO

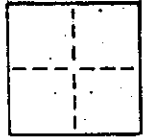
# CORNER RECORD

2 of 2

COUNTY OF MARIN T. \_\_\_\_\_ R. \_\_\_\_\_ MERIDIAN \_\_\_\_\_ CALIFORNIA

CORNER TYPE: GOVT. CORNER  MEANDER  RANCHO  CONTROL  OTHER

CORNER IDENTIFICATION — DATE OF VISIT \_\_\_\_\_ 19\_\_\_\_



N/A

CORNER — LEFT AS FOUND  FOUND AND TAGGED  REESTABLISHED OBLITERATED CORNER  REBUILT

PHYSICAL DESCRIPTION OF CORNER FOUND; EVIDENCE AND METHOD USED TO IDENTIFY OR REESTABLISH

N/A

PHYSICAL DESCRIPTION OF MONUMENTS, REBUILT OR PERPETUATED

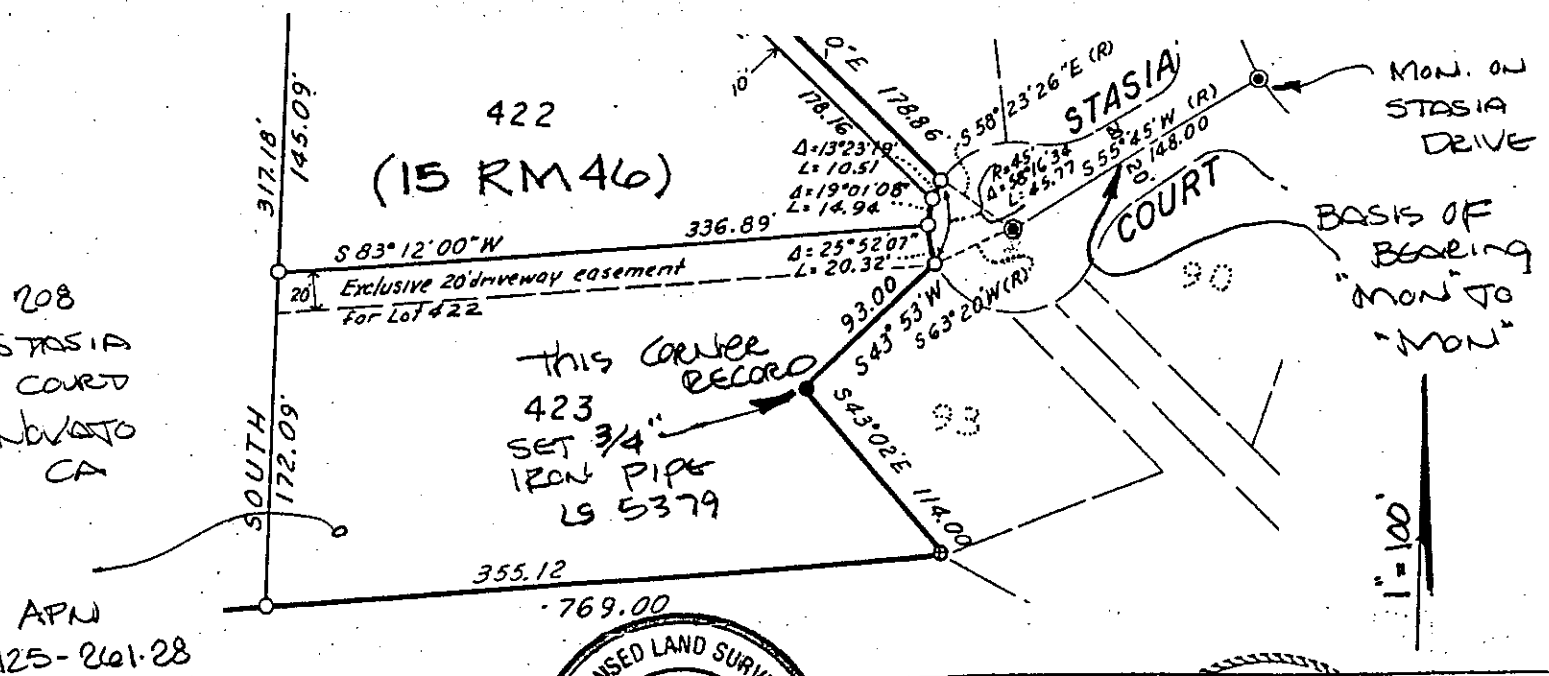
LOT 423 - MAP OF PLEASANT VALLEY UNIT 7 (15 RM 46)  
 SET PROPERTY CORNER OF RECORD AS SHOWN BELOW

CALIFORNIA COORDINATE SYSTEM ORDER: FIRST  N/A SECOND  THIRD

STATIONS USED: NGS (USC & GS)  STATE  COUNTY  OTHER  STATION \_\_\_\_\_ STATION \_\_\_\_\_

ZONE \_\_\_\_\_ ELEVATION \_\_\_\_\_ NORTHINGS (Y) \_\_\_\_\_ EASTINGS (X) \_\_\_\_\_

SKETCH: (Include reference tie or witness points, remarks and topo of area)



208  
 STASIA  
 COURT  
 NovATO  
 CA

APN  
 125-261-28

SEAL

LAND SURVEYOR

DAVID J. SCRANTON

NO. 8479

1989

E. CALIFORNIA

SURVEYOR'S CERTIFICATE

THIS CORNER RECORD WAS PREPARED BY ME OR UNDER MY DIRECTION IN CONFORMANCE WITH THE LAND SURVEYORS ACT ON June 6 1989

SIGNED: David J. Scranton

L.S. or R.C.E. No. LS 5379

COUNTY SURVEYOR'S CERTIFICATE

THE CORNER RECORD WAS RECEIVED AND EXAMINED AND FILED IN THE PUBLIC RECORDS ON June 28 1989

TITLE LOT 423

DOCUMENT No. \_\_\_\_\_

STATEMENT ON BACK OF SHEET YES  NO