

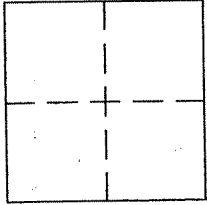
CORNER RECORD

Document Number APN 025-181-41

City of CORTE MADERA

County of MARIN, California

Brief Legal Description LINE BETWEEN APN 025-171-41 & 025-181-43 AS SHOWN ON 34 OS 8



CORNER TYPE

Government Corner Control
Meander Property
Rancho Other
Date of Survey 8-30-11

COORDINATES (Optional)

N. _____
E. _____
Zone _____ NAD27 NAD83
NAD83 Epoch _____
Elev. _____
Vert. Datum: NGVD29 NAVD88
Meas. Units: Metric Imperial

Corner - Left as found Found and tagged Established Reestablished Rebuilt

Identification and type of corner found: Evidence used to identify or procedure used to establish or reestablish the corner:

FOUND 3/4" IP'S TAGGED RCE 10057 AND PLS 5296 AS SHOWN ON 34 OS 8 AND ON THAT
CORNER RECORD FILED FOR APN 025-181-41 ON OCT. 25, 2007 AND ON THE REVERSE OF THIS SHEET

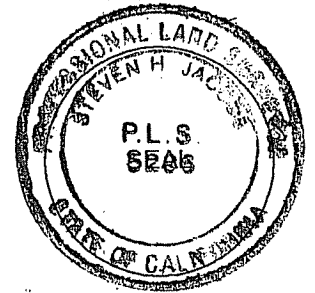
A description of the physical condition of the monument as found and as set or reset:

SET REBARS W/CAP, PLS 5296, AND HUB & TAG, LINE POINT, PLS 5296, AS SHOWN ON REVERSE

SURVEYOR'S STATEMENT

This Corner record was prepared by me or under my direction in conformance with
the Land Surveyor's Act on SEPTEMBER 21, 2011

Signed [Signature] P.L.S. or R.C.E. No. PLS 5296



COUNTY SURVEYOR'S STATEMENT

This Corner Record was received NOVEMBER 2, 2011

and examined and filed JANUARY 4, 2012

Signed [Signature] P.L.S. or R.C.E. No. 7128

Title COUNTY SURVEYOR



County Surveyor's Comment _____

SEE CORNER RECORD FOR
 APN 025-181-41, FILED
 OCT. 25, 2007



**LANDS OF
 CORNING**
 APN 025-181-41

LEGEND

- ⊙ FND. 3/4"IP, RCE 10057
- FND. 3/4"IP, PLS 5296 PER COR. REC.
- SET REBAR & CAP, PLS 5296
- SET HUB & TAG, PLS 5296

S32°40'06"W 0.45
 FROM CORNER
 PER 34 OS 8

S86°08'14"W
 49.98

S72°51'22"W 0.37
 FROM CORNER
 PER 34 OS 8

**LANDS OF
 SIMON**
 APN 025-181-43

SEE 34 OS 8

N76°00'W

S26°04'50"E
 110.13

N77°39'10"W
 50.12

EXIST.
 GARAGE

RETAINING
 WALL

OVR 10.4
 OVR 3.9

S26°48'E 51.00

S7°E 3.82' FROM FACE
 OF JOINT UTILITY POLE

20.00

S56°22'50"E

157.53

S56°18'00"E 120.73

171.96

107.68

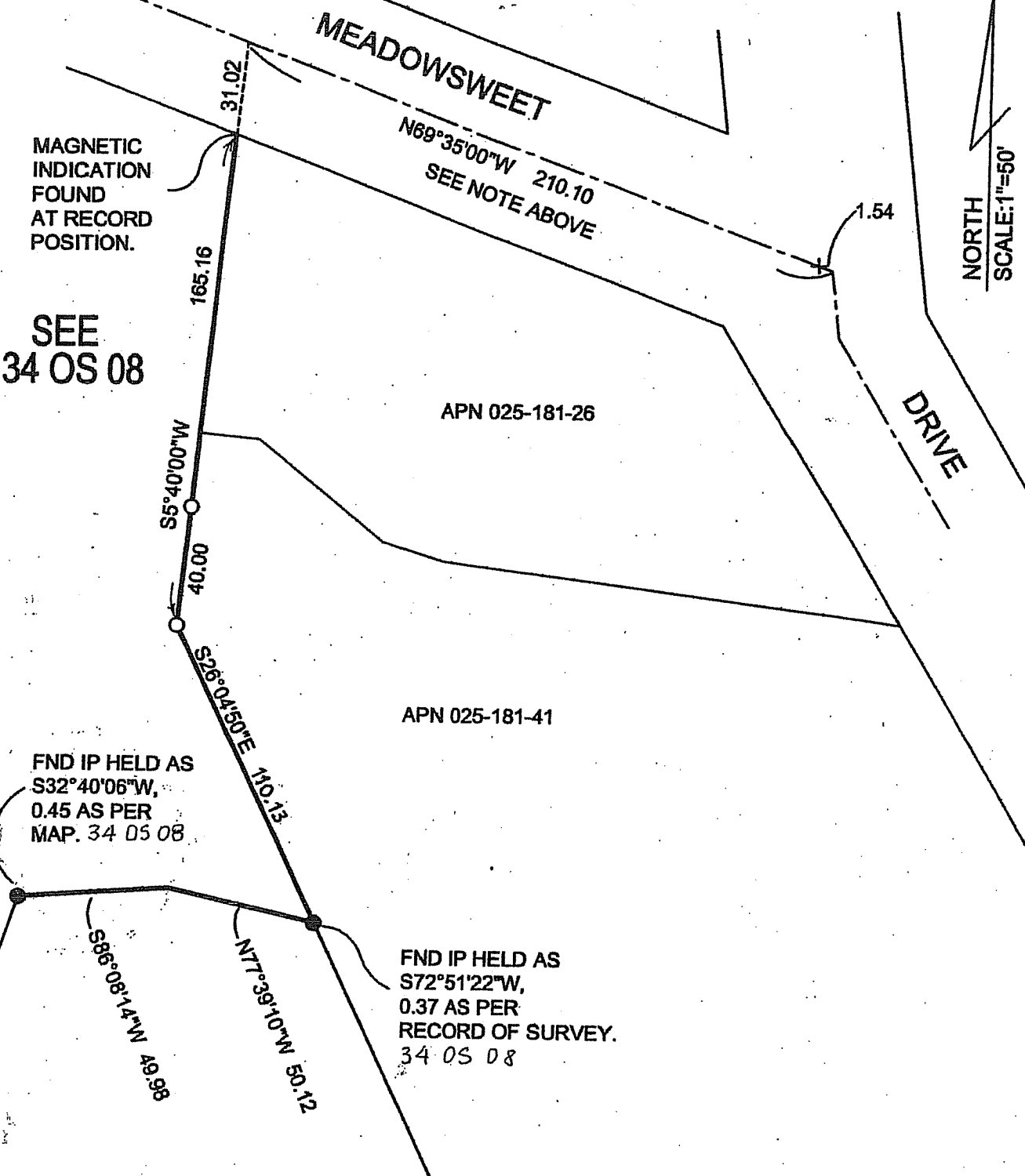
S33°42'00"W
 40.00

DEER
 RUN

PREPARED BY:
 JACOBS LAND SURVEYING
 P.O. BOX 7829
 COTATI, CA. 94931
 415-454-2235

NOTE

DISTANCE ALONG THE CENTERLINE OF MEADOWSWEET DRIVE IS MIS-DIMENSIONED ON THE RECORD OF SURVEY.



NORTH
SCALE: 1"=50'

SEE
34 OS 08

APN 025-181-26

APN 025-181-41

FND IP HELD AS
 $S32^{\circ}40'06''W$,
0.45 AS PER
MAP. 34 OS 08

FND IP HELD AS
 $S72^{\circ}51'22''W$,
0.37 AS PER
RECORD OF SURVEY.
34 OS 08

LEGEND

- + FND '+' IN MH RIM PER R/S
- O SET 3/4" IP
- FND 3/4" IP RCE 10057
PER 34 OS 08