

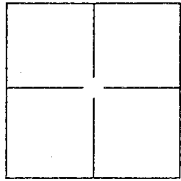
CORNER RECORD

Document Number APN 125-120-24 AND 32

City of Novato

County of Marin, California

Brief Legal Description Portion of Lot 1 - 9 PM 43 and Portion of Document Number 2012-062104, Marin County Records



CORNER TYPE

Government Corner Control
 Meander Property
 Rancho Other

Date of Survey August 14, 2014

COORDINATES(Optional)

N. _____
 E. _____
 Zone _____ NAD27 NAD83
 NAD83 Epoch _____
 Elev. _____
 Vert. Datum: NGVD29 NADV88
 Meas. Units: Metric Imperial

Corner - Left as found Found and tagged Established Reestablished Rebuilt

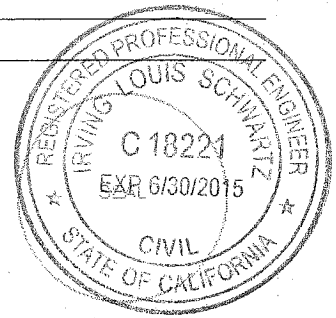
Identification and type of corner found: Evidence used to identify or procedure used to establish or reestablish the corner:
Found (2) 1/2" Iron Pipes with Brass Nail and Tag, stamped "LS 2798", as shown on 17 OS 64. Measured distance between of 722.32', calculated same as record. Held as Basis of Bearings for survey taken as S 65°12'00" W.

A description of the physical condition of the monument as found and as set or reset: _____
Found record monuments(15) at corners per 17 OS 64 as shown on Exhibit A, Page 2 of 2. Set 3/4" iron pipes(5) with yellow cap stamped with "RCE 18221" on property lines as shown on Exhibit A, Page 2 of 2.

SURVEYOR'S STATEMENT

This Corner Record was prepared by me or under my direction in conformance with the Land Surveyors Act on October 31, 2014

Signed [Signature] P.L.S. or R.C.E. No.: 18221



COUNTY SURVEYOR'S STATEMENT

This Corner Record was received NOVEMBER 10, 2014 and examined and filed NOVEMBER 13, 2014

Signed [Signature] P.L.S. or R.C.E. No.: 7821

Title DEPUTY

County Surveyor's Comment _____





ILS ASSOCIATES, INC.®
 Civil Engineering & Land Surveying
 79 Galli Drive, Suite A
 Novato, Ca 94949-5717
 (415)883-9200 FAX (415)883-2763

DRAWN: GG	JOB NO: 1432B
DATE: 10/31/2014	PAGE NO. 2 OF 2

EXHIBIT A

LEGEND

- SET 3/4" IRON PIPE WITH YELLOW CAP STAMPED "RCE 18221"
- FOUND 1/2" IRON PIPE WITH BRASS NAIL AND TAG, STAMPED "LS 2798" (1)
- ⊗ FOUND 1/2" IRON PIPE WITH WOOD PLUG, NO TAG
- (A) BASIS OF BEARINGS: S65°12'00"W, 722.32'(C) (1), BETWEEN POINTS "A" AND "B"
- (C) CALCULATED
- FND. FOUND
- () RECORD INFORMATION
- (PTN) PORTION
- DN DOCUMENT NUMBER
- (T) TOTAL
- (A) = SILVEIRA DN 2012-062104

LINE TABLE

NO.	BEARING	DISTANCE
L1	S30°21'08"W	10.00'
L2	S30°19'54"W	10.00'
L3	S64°40'51"W	63.41'
L4	S64°40'51"W	40.28'(C) (1)
L5	(N60°39'12"E)	(43.48') (1)
L6	(S64°40'51"W)	(161.24')(C) (1)
L7	(S64°40'51"W)	(61.22') (1)
L8	(S64°40'51"W)	(43.52')(C) (1)

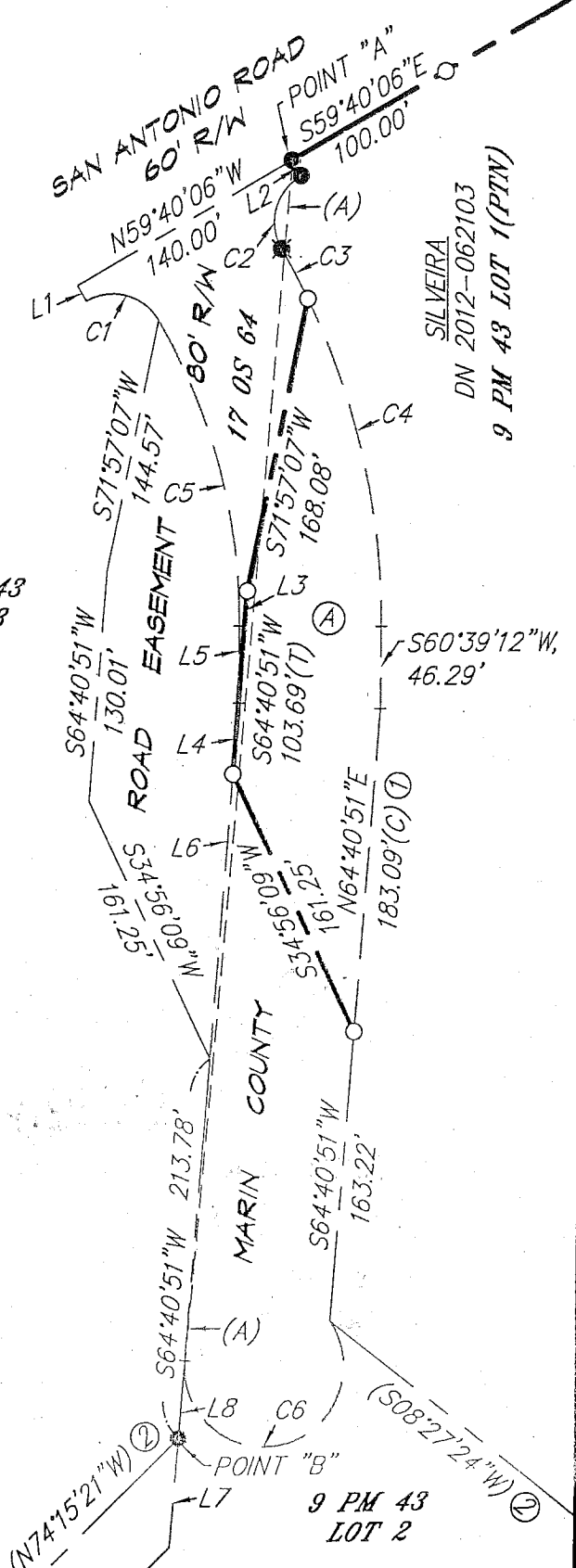
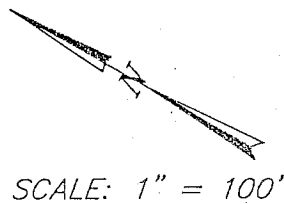
CURVE DATA

NO.	RADIUS	DELTA	LENGTH
C1	30'	90°	47.12'
C2	30'	90°	47.12'
C3	421.15'	04°19'27"	31.79' (1)
C4	421.15'	25°59'51"	191.09' (1)
C5	341.15'	30°19'18"	180.54' (1)
C6	45'	218°56'33"	171.96' (2)

REFERENCES

- (1) RECORD OF SURVEY, LOT LINE ADJUSTMENT BOOK 17 OS PAGE 64
- (2) PARCEL MAP BOOK 9 P.M. PAGE 43

APN 125-130-24 and 32



N:\OLD\1432B\dwg\1432BCR.dwg, P8.5x11TCR-100SC, 10/31/2014 2:04:07 PM, Letter (8.5" x 11"), ILS Associates, Inc. -, G.G.