

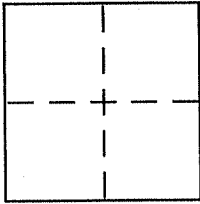
CORNER RECORD

Document Number APN 124-332-23

City of NOVATO

County of Marin, California

Brief Legal Description LOT 511 PER 12 MAPS 21



CORNER TYPE

Government Corner Control
Meander Property
Rancho Other
Date of Survey 09-28-10

COORDINATES (Optional)

N. _____
E. _____
Zone _____ NAD27 NAD83
NAD83 Epoch _____
Elev. _____
Vert. Datum: NGVD29 NAVD88
Meas. Units: Metric Imperial

Corner - Left as found Found and tagged Established Reestablished Rebuilt

Identification and type of corner found: Evidence used to identify or procedure used to establish or reestablish the corner:

See page 2 of 2

A description of the physical condition of the monument as found and as set or reset:

See page 2 of 2

SURVEYOR'S STATEMENT

This Corner Record was prepared by me or under my direction in conformance with the Land Surveyor's Act on 1/17/2011

Signed [Signature] P.L.S. or R.C.E. No. 6784



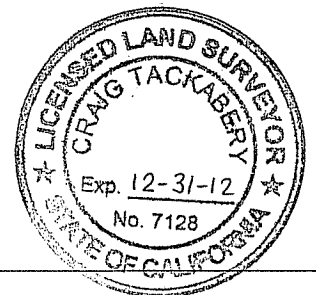
COUNTY SURVEYOR'S STATEMENT

This Corner Record was received FEBRUARY 16, 2011

and examined and filed MARCH 8, 2011

Signed [Signature] P.L.S. or R.C.E. No. 7128

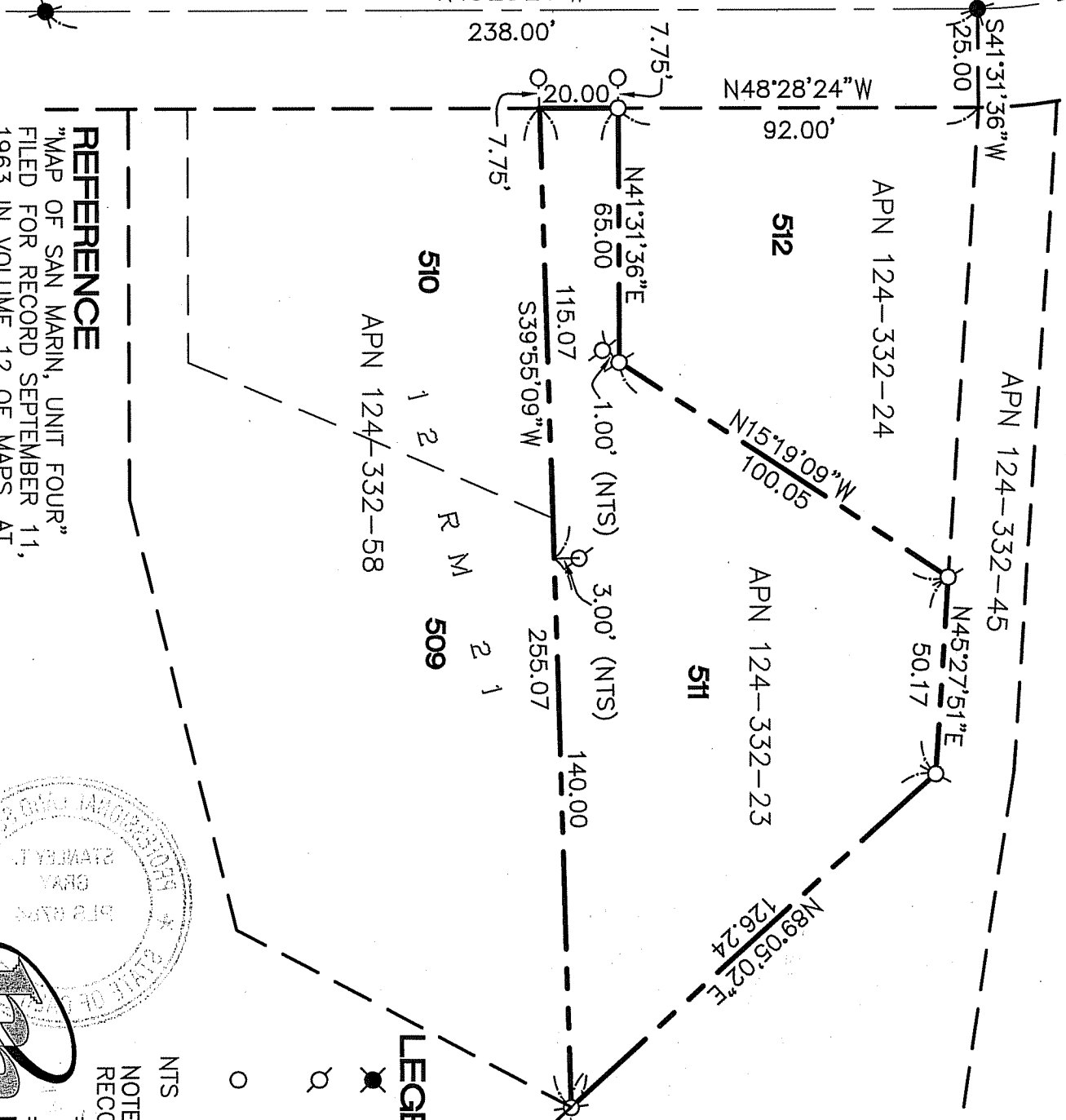
Title COUNTY SURVEYOR



County Surveyor's Comment _____

ANDREAS COURT
(50' WIDE)

BASIS OF BEARING
N48°28'24"W



REFERENCE

"MAP OF SAN MARIN, UNIT FOUR"
FILED FOR RECORD SEPTEMBER 11,
1963 IN VOLUME 12 OF MAPS, AT
PAGE 21, MARIN COUNTY RECORDS.

LEGEND

- FOUND STANDARD STREET MONUMENT PER I2 M21
- SET 5/8" REBAR WITH CAP, PLS 6784, EXCEPT WHERE NOTED.
- SET LEAD PLUG, BRASS NAIL AND TAG, PLS 6784
- NTS NOT TO SCALE

NOTE
RECORD=MEASURED

CORNER RECORD

MERIDIAN SURVEYING, INC.

