

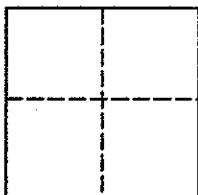
Lands of Alfale Inc.
Job #: 01-586

CORNER RECORD

Document Number 124-282-18

City of Novato , County of Marin , California

Brief Legal Description: Lot 1, 1 PM 20



CORNER TYPE

COORDINATES (Optional)

Government Corner Control
Meander Property
Rancho Other

N _____
E _____
Zone _____ NAD27 NAD83
NAD 83 Epoch
Elev. _____
Vert. Datum: NGVD29 NAVD88
Meas. Units: Metric Imperial

Date of Survey December 2001

Corner - Left as found Found and tagged Established Reestablished Rebuilt

Identification and type of corner found: Evidence used to identify or procedure used to establish or reestablish the corner:
See page 2 of 2

A description of the physical condition of the monument as found and as set or reset:
See page 2 of 2

SURVEYOR'S STATEMENT

This Corner Record was prepared by me or under my direction in conformance with

The Land Surveyor's Act on December 11, 2001.

Signed [Signature] P.L.S 6649



COUNTY SURVEYOR'S STATEMENT

This Corner Record was received January 7, 2002

and examined and filed January 8, 2002

Signed [Signature] P.L.S. or R.C.E. No. 7128

Title DEPUTY

County Surveyors' Comment _____

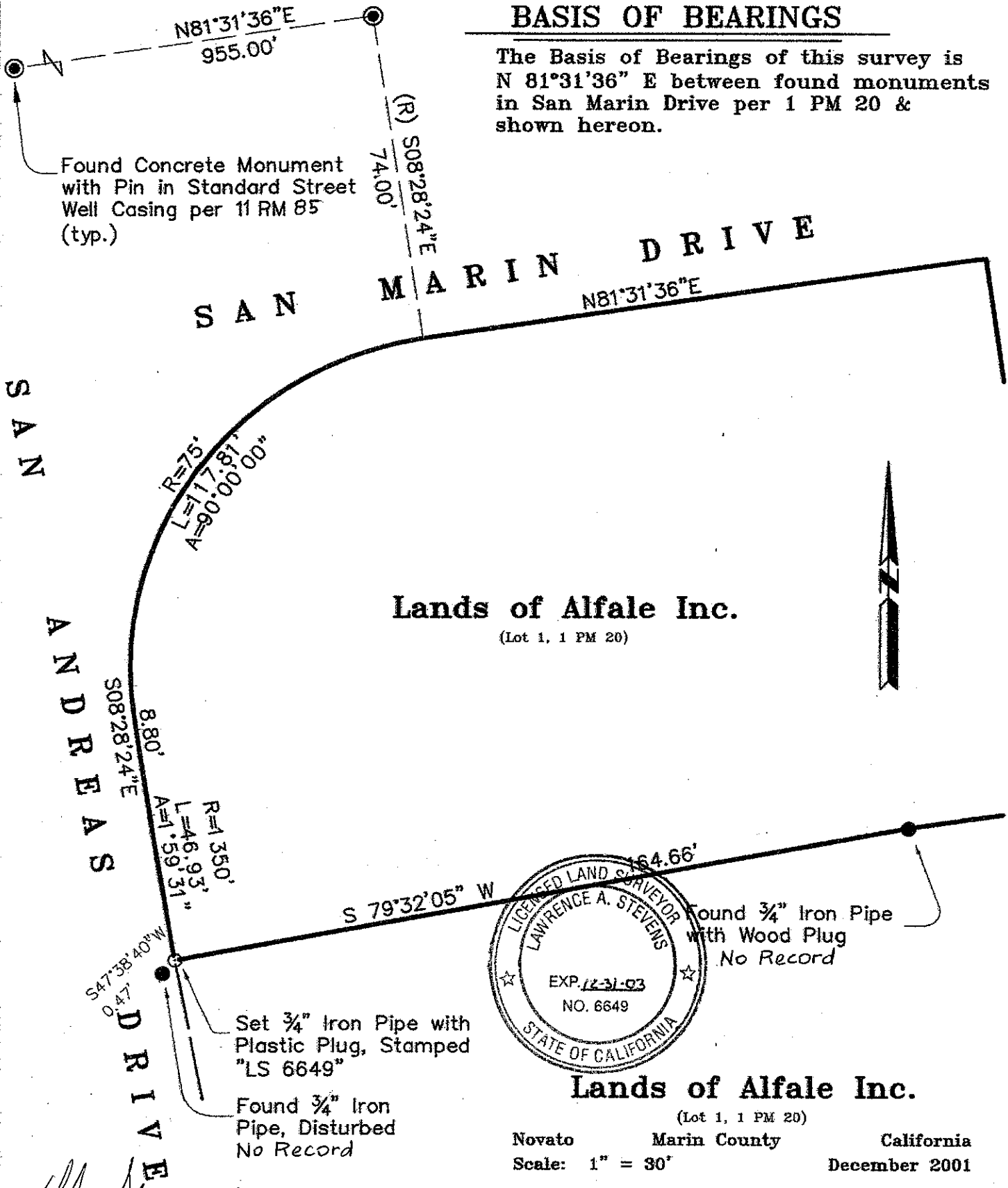


All distances shown are in feet and decimals thereof

BASIS OF BEARINGS

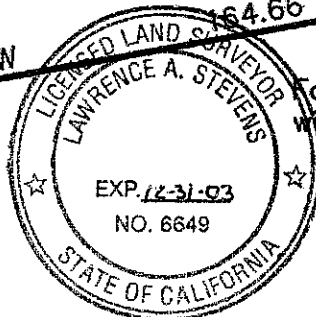
The Basis of Bearings of this survey is N 81°31'36" E between found monuments in San Marin Drive per 1 PM 20 & shown hereon.

Found Concrete Monument with Pin in Standard Street Well Casing per 11 RM 85 (typ.)



Lands of Alfafe Inc.

(Lot 1, 1 PM 20)



Found 3/4" Iron Pipe with Wood Plug No Record

Set 3/4" Iron Pipe with Plastic Plug, Stamped "LS 6649"

Found 3/4" Iron Pipe, Disturbed No Record

Lands of Alfafe Inc.

(Lot 1, 1 PM 20)

Novato Marin County California
Scale: 1" = 30' December 2001

L.A. Stevens & Associates, Inc.

Professional Land Surveyors * (415) 382-8321
1132 Bel Marin Keys Blvd. * Novato, CA 94949

Lawrence A. Stevens, PLS 6649
my license expires 12/31/03

Job # LD586COR

Page 2 Of 2