

CORNER RECORD

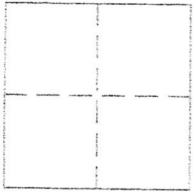
Agency Index 21-028

Document Number APN 124-252-21

City of NOVATO County of MARIN, California
Brief Legal Description LOT 404, 11 RM 88, SAN MARIN UNIT 3

CORNER TYPE

COORDINATES (Optional)



- Government Corner
- Meander
- Rancho
- Control
- Property
- Other

Date of Survey 10-20-20

N. _____ E. _____

Elevation _____

Units: Metric U.S. Survey Foot

Horizontal Datum: _____

Zone _____ Epoch Date _____

Vert. Datum: _____

Complies with Public Resources Code §§8801-8819

Complies with Public Resources Code §§8890-8902

PLS Act Ref.: 8765(d) 8771 8773 Other

Corner/Monument: Left as found Established Rebuilt Pre-Construction
 Found and tagged Reestablished Referenced Post-Construction

Narrative of Corner identified and monument as found, reset, replaced, or removed.

See sheet #2 for description(s):

RECOVERED STANDARD STREET MONUMENTS 2 AS SHOWN ON 11 RM 88 AND ON REVERSE.

SET 1/2" REBARS AND TAG PLS 5296, SET TACK AND TAG IN FENCE AND SET PK & TAG PLS 5296 IN CURB AS SHOWN ON REVERSE.

SURVEYOR'S STATEMENT

This Corner record was prepared by me or under my direction in conformance with the Land Surveyor's Act on DECEMBER 27, 2020

Signed [Signature] P.L.S. or R.C.E. No. PLS 5296



COUNTY SURVEYOR'S STATEMENT

This Corner Record was received 3-9-21

and examined and filed 5-12-21

Signed [Signature] P.L.S. or R.C.E. No. 9292

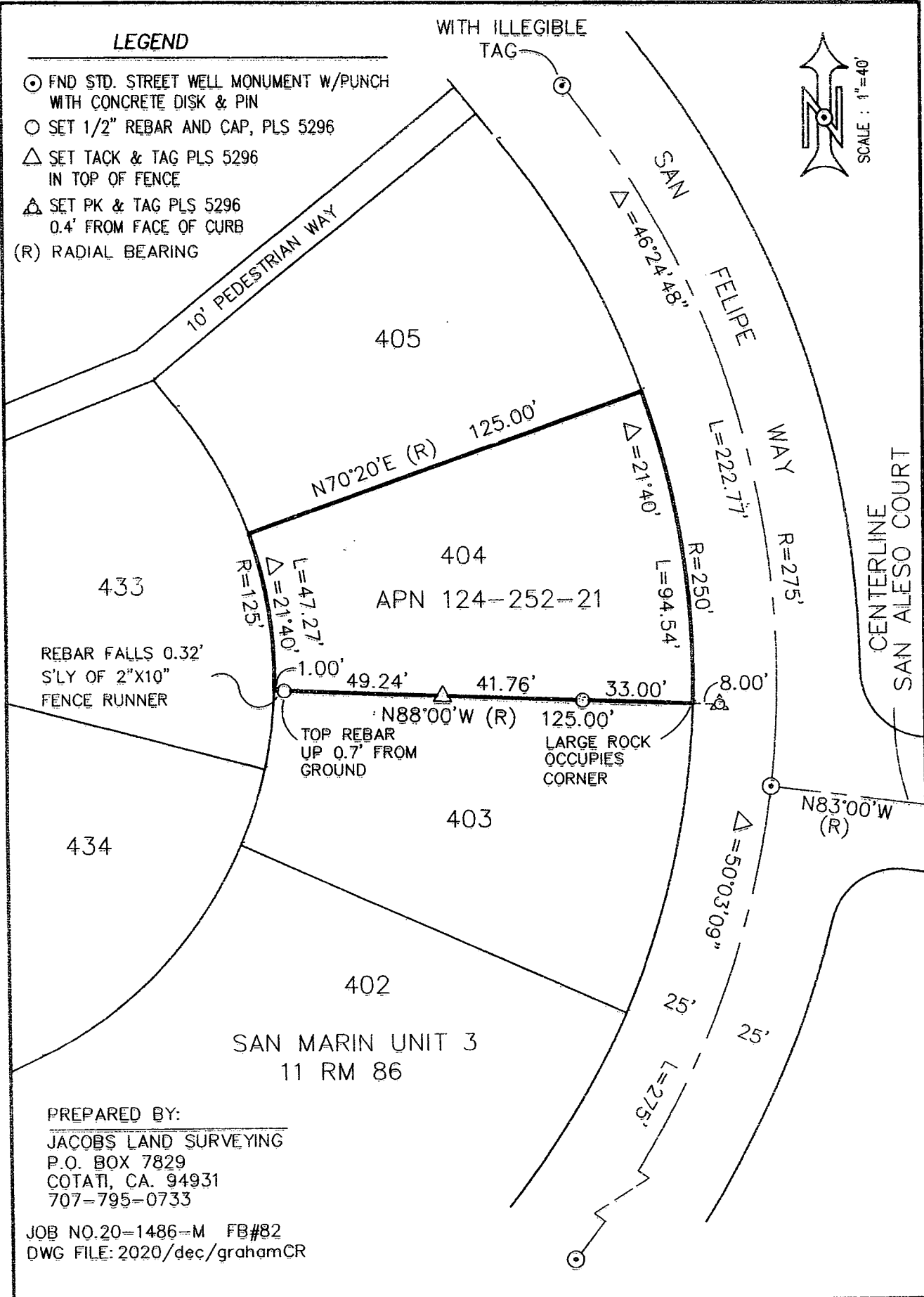
Title DEPUTY

County Surveyor's Comment



LEGEND

- ⊙ FND STD. STREET WELL MONUMENT W/PUNCH WITH CONCRETE DISK & PIN
- SET 1/2" REBAR AND CAP, PLS 5296
- △ SET TACK & TAG PLS 5296 IN TOP OF FENCE
- ⊠ SET PK & TAG PLS 5296 0.4' FROM FACE OF CURB
- (R) RADIAL BEARING



PREPARED BY:
 JACOBS LAND SURVEYING
 P.O. BOX 7829
 COTATI, CA. 94931
 707-795-0733

JOB NO. 20-1486-M FB#82
 DWG FILE: 2020/dec/grahamCR