

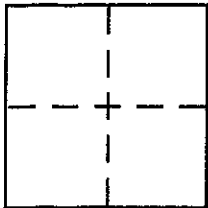
**CORNER RECORD**

Document Number APN 124-094-15

City of NOVATO

County of MARIN, California

Brief Legal Description LOT 1007 13 RM 49, APN 124-094-15, 2183 FELIZAR.



**CORNER TYPE**

Government Corner  Control   
Meander  Property   
Rancho  Other   
Date of Survey \_\_\_\_\_

**COORDINATES (Optional)**

N. \_\_\_\_\_  
E. \_\_\_\_\_  
Zone \_\_\_\_\_ NAD27  NAD83   
NAD83 Epoch \_\_\_\_\_  
Elev. \_\_\_\_\_  
Vert. Datum: NGVD29  NAVD88   
Meas. Units: Metric  Imperial

Corner - Left as found  Found and tagged  Established  Reestablished  Rebuilt

Identification and type of corner found: Evidence used to identify or procedure used to establish or reestablish the corner:

See Sketch on Back

A description of the physical condition of the monument as found and as set or reset:

See Sketch on Back

**SURVEYOR'S STATEMENT**

This Corner Record was prepared by me or under my direction in conformance with

the Land Surveyor's Act on July 8 2002

Signed Michael A. Brogan P.L.S. or R.C.E. No. LS 5767



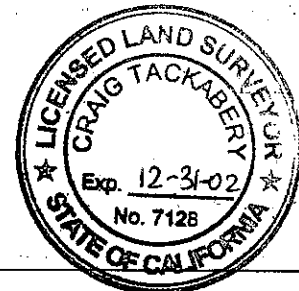
**COUNTY SURVEYOR'S STATEMENT**

This Corner Record was received JULY 10, 2002

and examined and filed JULY 16, 2002

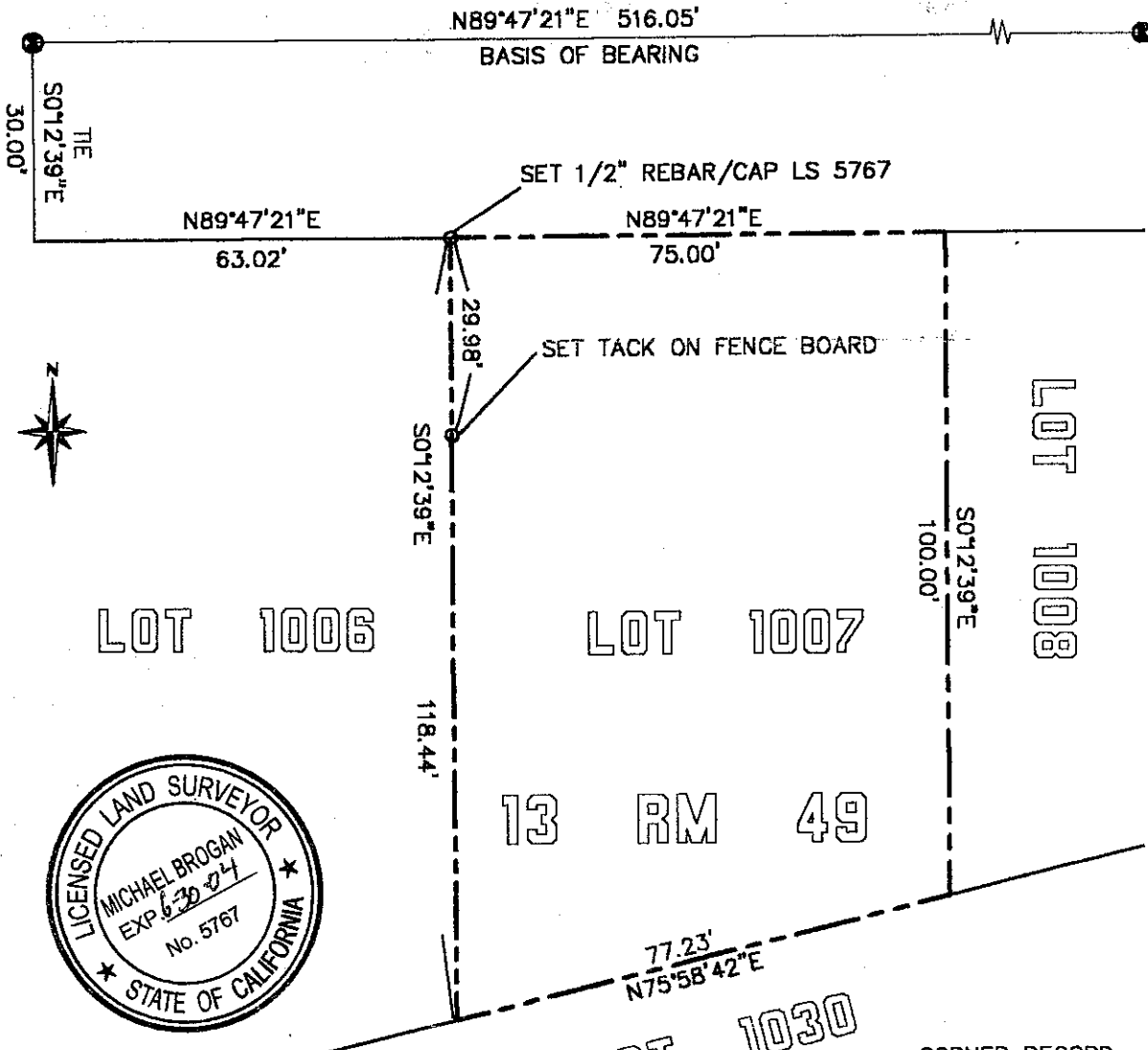
Signed \_\_\_\_\_ P.L.S. or R.C.E. No. 7128

Title DEPUTY



County Surveyor's Comment \_\_\_\_\_

FELIZ DRIVE (60')



● = FOUND SUBDIVISION MONUMENT  
 ALL DIMENSIONS IN FEET AND DECIMALS THEREOF



APN 124-094-15

CORNER RECORD  
 LOT 1007 13 RM 49  
 2183 FELIZE DRIVE  
 NOVATO MARIN COUNTY CALIFORNIA

M. BROGAN AND ASSOCIATES, INC.  
 319 MILLER AVENUE SUITE 4  
 MILL VALLEY CA 94941  
 JOB NO. 5523 OCTOBER 2001  
 NOT TO SCALE