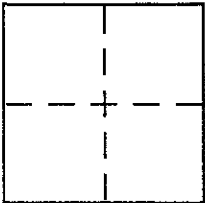


**CORNER RECORD**

Document Number 124-045-02

City of NOVATO County of MARIN, California

Brief Legal Description LOT 711 MAP OF SAN MARIN, Unit 6 12RM 54



**CORNER TYPE**

Government Corner  Control   
Meander  Property   
Rancho  Other   
Date of Survey 4/23/02

**COORDINATES (Optional)**

N. \_\_\_\_\_  
E. \_\_\_\_\_  
Zone \_\_\_\_\_ NAD27  NAD83   
NAD83 Epoch \_\_\_\_\_  
Elev. \_\_\_\_\_  
Vert. Datum: NGVD29  NAVD88   
Meas. Units: Metric  Imperial

Corner - Left as found  Found and tagged  Established  Reestablished  Rebuilt

Identification and type of corner found: Evidence used to identify or procedure used to establish or reestablish the corner:

REESTABLISH THE REAR LOT CORNERS FOR LOT 711, 12 RM 54. SEE SKETCH ON REVERSE SIDE - SET CORNERS FROM EXISTING STREET MONUMENTS OF RECORD ON SAN LUIS WAY

A description of the physical condition of the monument as found and as set or reset:

NIW CORNER - set 1/2" rebar with PLS CAP 5379 & driven flush with grade  
SW CORNER - falls ON SANITARY SEWER MANHOLE COVER (TIED BELTS ON MANHOLE AS REFERENCE)

**SURVEYOR'S STATEMENT**

This Corner Record was prepared by me or under my direction in conformance with the Land Surveyor's Act on April 29 2002

Signed Douglas J. Scranton P.L.S. or R.C.E. No. PLS 5379



**COUNTY SURVEYOR'S STATEMENT**

This Corner Record was received MAY 3, 2002

and examined and filed MAY 7, 2002

Signed \_\_\_\_\_ P.L.S. or R.C.E. No. 7128

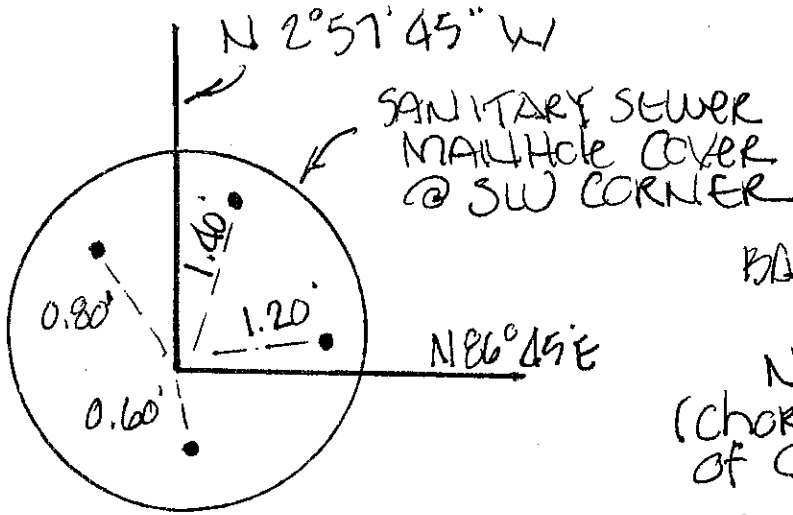
Title DEPUTY



County Surveyor's Comment \_\_\_\_\_

JN10221

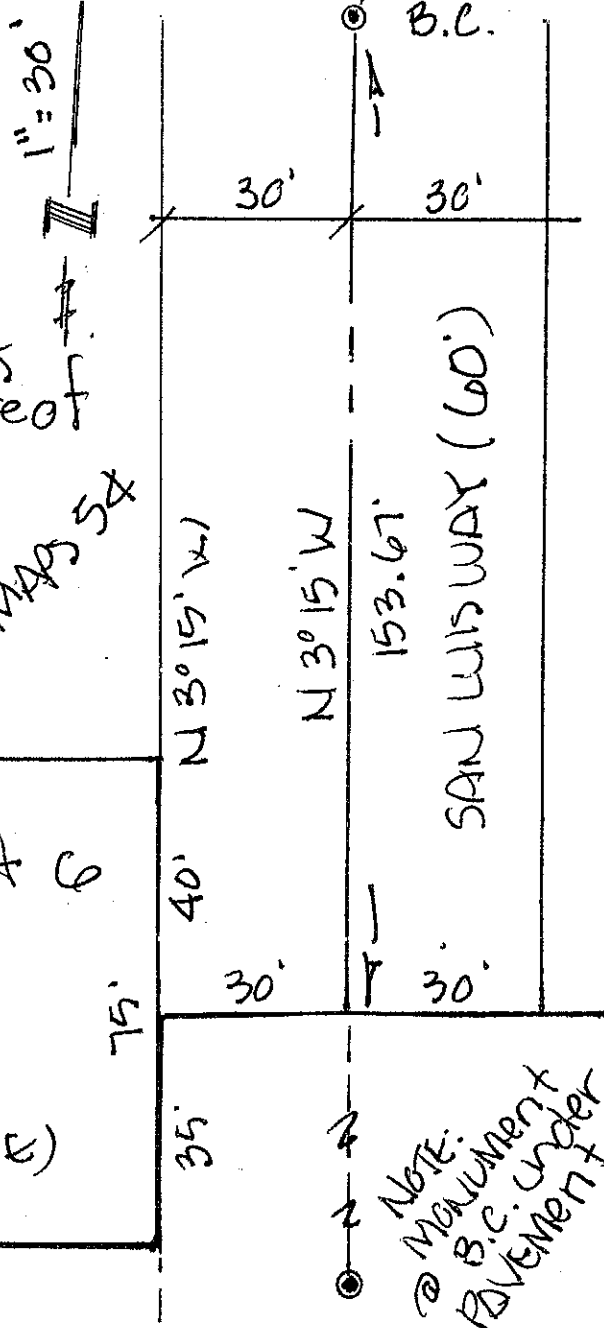
Prepared by Douglas J. Scranton Surveying  
D.J. SCRANTON SURVEYING  
845 CLIVE AVE NOVATO, CA



MONUMENT @  
ROMERO COURT E.  
SAN LUIS WAY

BEGINNING OF  
BEARING  
N 19° 15' E  
(CHORD BEARING  
OF CURVE)  
110.98

SANITARY SEWER MANHOLE  
DETAIL: NO SCALE  
TIES SHOWN ARE FROM  
EXISTING LOCKING BOLTS  
ON MANHOLE TO ACTUAL  
CORNER POINT SHOWN  
DISTANCES IN FEET & DECIMALS  
thereof



set 1/2" rebar  
PS CAP 5379  
LOT 710  
12 MAPS 54  
117.26'  
N 86° 45' E  
SAN MARINO Unit 6  
LOT 711  
75'  
SEWER MANHOLE  
(SEE DETAIL ABOVE)  
117.64'  
N 86° 45' E  
(12 MAPS 45)