

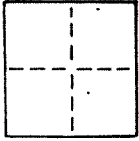
CORNER RECORD

1 of 1

COUNTY OF MARIN T. \_\_\_\_\_ R. \_\_\_\_\_ MERIDIAN \_\_\_\_\_ CALIFORNIA

CORNER TYPE: GOVT. CORNER  MEANDER  RANCHO  CONTROL  OTHER

CORNER IDENTIFICATION — DATE OF VISIT \_\_\_\_\_ 19\_\_\_\_



N/A

CORNER — LEFT AS FOUND  FOUND AND TAGGED  REESTABLISHED OBLITERATED CORNER  REBUILT

PHYSICAL DESCRIPTION OF CORNER FOUND; EVIDENCE AND METHOD USED TO IDENTIFY OR REESTABLISH

N/A

PHYSICAL DESCRIPTION OF MONUMENTS REBUILT OR PERPETUATED

SET 3/4" IRON PIPE / LS TAG 5379 @ THE SOUTHWEST CORNER OF LOT 768 OF THE MAP OF SAN MARIN, UNIT 6, 12 RM 54 BEING AP# 124-042-01

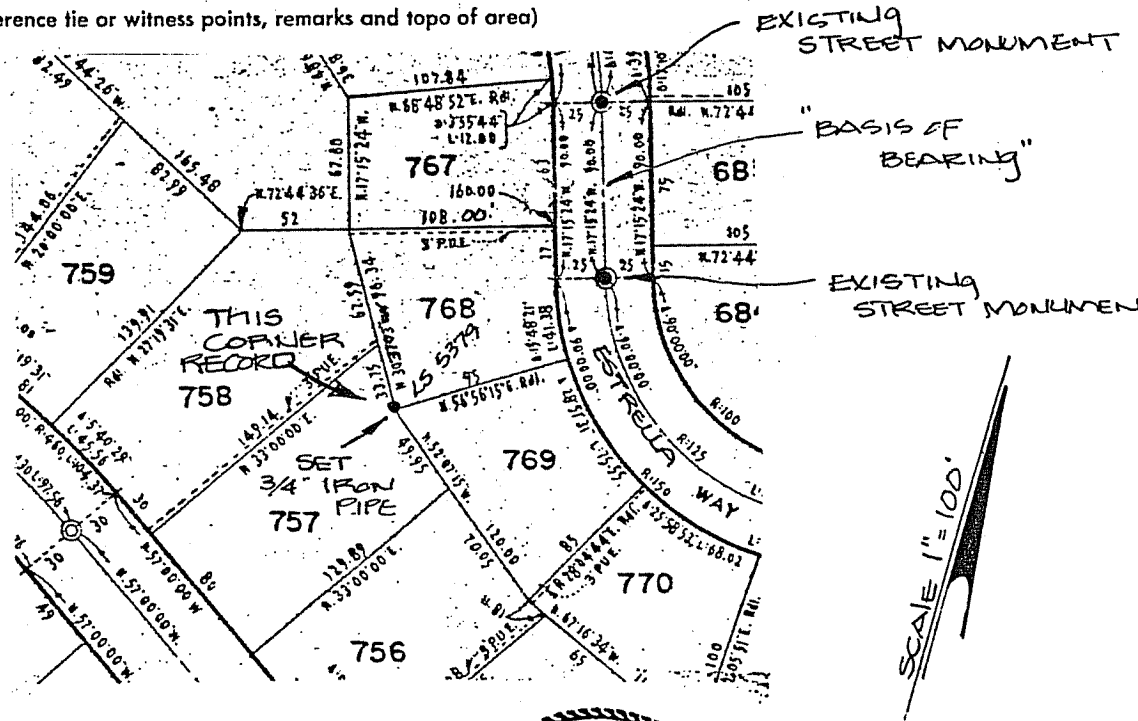
CALIFORNIA COORDINATE SYSTEM ORDER: FIRST  N/A SECOND  THIRD

STATIONS USED: NGS (USC & GS)  STATE  COUNTY  OTHER  STATION \_\_\_\_\_ STATION \_\_\_\_\_

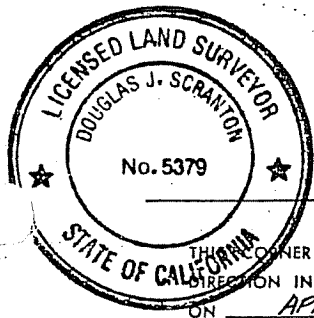
ZONE \_\_\_\_\_ ELEVATION \_\_\_\_\_ NORTHINGS (Y) \_\_\_\_\_ EASTINGS (X) \_\_\_\_\_

SKETCH: (Include reference tie or witness points, remarks and topo of area)

LOT 768  
 MAP OF  
 SAN MARIN  
 UNIT 6  
 ( 12 RM 54 )  
 78 ESTRELLA  
 WAY  
 NOVATO, CA

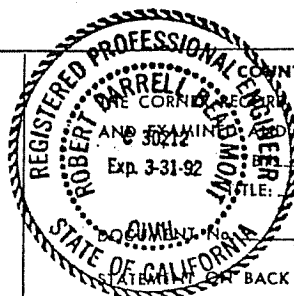


SCALE 1" = 100'



SURVEYOR'S CERTIFICATE  
 THIS CORNER RECORD WAS PREPARED BY ME OR UNDER MY DIRECTION IN CONFORMANCE WITH THE LAND SURVEYORS ACT ON APRIL 14<sup>th</sup> 1989

SIGNED: Douglas J. Scranton  
 L.S. or R.C.E. No.: LS 5379 EXP. 6/30/92



COUNTY SURVEYOR'S CERTIFICATE  
 THIS CORNER RECORD WAS RECEIVED 4/24 1989  
 AND EXAMINED AND FILED 4/24 1989  
 Exp. 3-31-92  
 FILE: RDB  
DES