

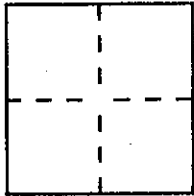
CORNER RECORD

Document Number A.P. #124-042-01

City of Novato

County of Marin, California

Brief Legal Description Lot 768, Volume 12 of Maps, at Page 54, Marin County Records



CORNER TYPE

Government Corner Control
Meander Property
Rancho Other
Date of Survey 6-27-01

COORDINATES (Optional)

N. _____
E. _____
Zone _____ Datum _____
Elev. _____

Corner — Left as found Found and tagged Established Reestablished Rebuilt

Identification and type of corner found: Evidence used to identify or procedure used to establish or reestablish the corner:

Lot 768, as shown upon that certain Map entitled "Map of San Marin Unit Six
in the County of Marin, California," filed for record December 24, 1963
in Volume 12 of Maps, at Page 54, Marin County Records.

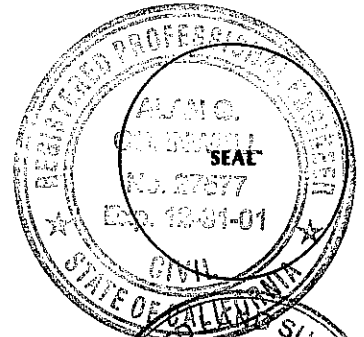
A description of the physical condition of the monument as found and as set or reset: _____

Set 3/4" iron pipe, tagged RCE #27577, exp. 12-31-01

SURVEYOR'S STATEMENT

This Corner Record was prepared by me or under my direction in conformance with
the Land Surveyors' Act on June 27, 2001

Signed [Signature] R.C.E. Number RCE 27577



COUNTY SURVEYOR'S STATEMENT

This Corner Record was received July 18, 2001 and examined
and filed July 20, 2001

Signed [Signature] Title DEPUTY

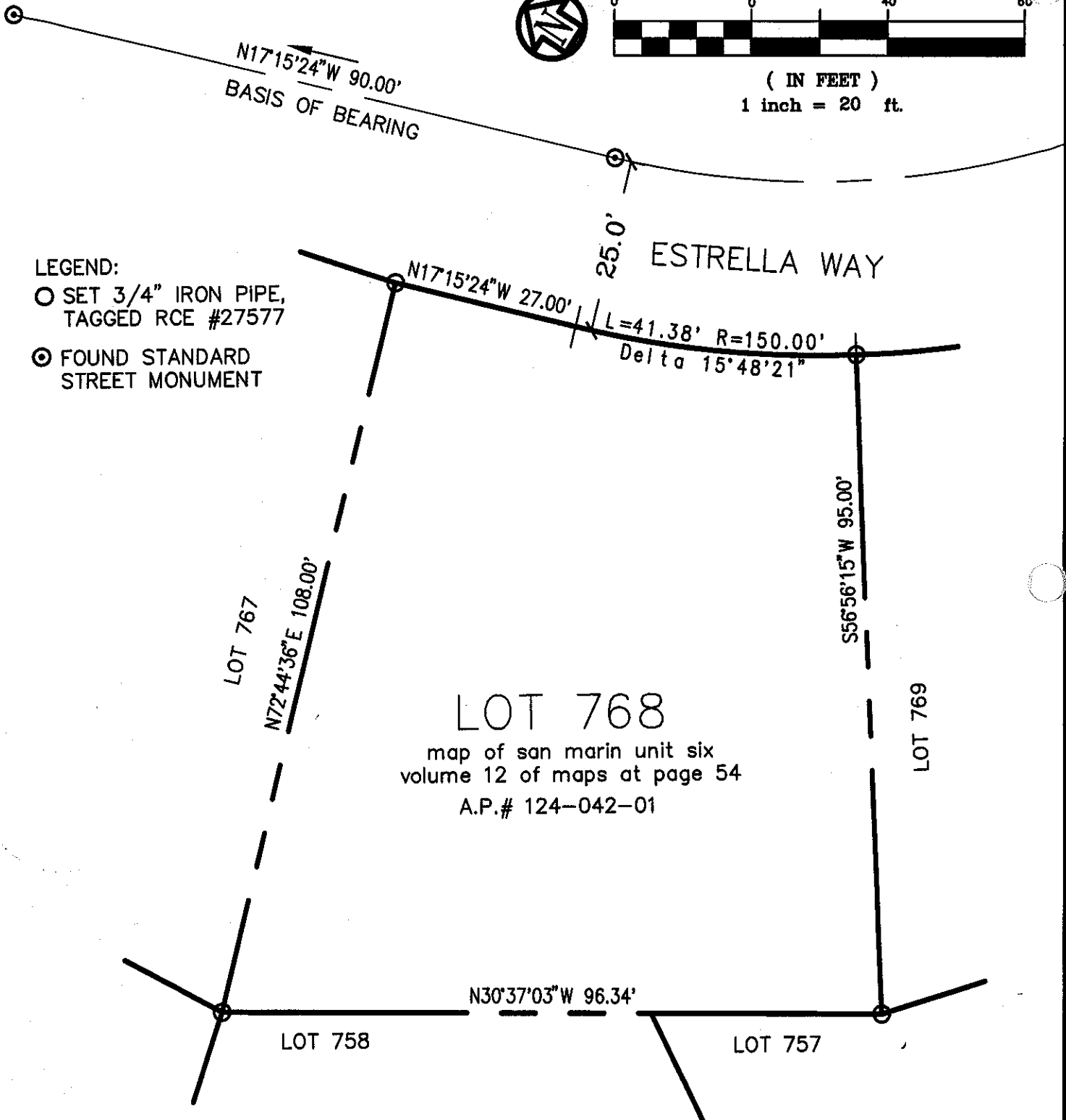


County Surveyor's Comment _____

GRAPHIC SCALE



(IN FEET)
1 inch = 20 ft.



LEGEND:

- SET 3/4" IRON PIPE, TAGGED RCE #27577
- ⊙ FOUND STANDARD STREET MONUMENT

LOT 768

map of san marin unit six
volume 12 of maps at page 54
A.P.# 124-042-01

CSW

[St]²

CSW/STUBER-STROEH
ENGINEERING GROUP, INC.
CONSULTING ENGINEERS

790 DeLong Ave., Novato, CA. 94945-3246
(415) 892-4763 FAX (415) 892-4502

© 2001

SCALE: 1:20
07/11/01

JOB# 8-410-070-C

ROB WAINWRIGHT
78 ESTRELLA WAY
NOVATO, CA

NOVATO

MARIN

CA

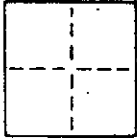
CORNER RECORD

1 of 1

COUNTY OF MARIN T. _____ R. _____ MERIDIAN _____ CALIFORNIA

CORNER TYPE: GOVT. CORNER MEANDER RANCHO CONTROL OTHER

CORNER IDENTIFICATION — DATE OF VISIT _____ 19__



N/A

CORNER — LEFT AS FOUND FOUND AND TAGGED REESTABLISHED OBLITERATED CORNER REBUILT

PHYSICAL DESCRIPTION OF CORNER FOUND; EVIDENCE AND METHOD USED TO IDENTIFY OR REESTABLISH

N/A

PHYSICAL DESCRIPTION OF MONUMENTS REBUILT OR PERPETUATED

SET 3/4" IRON PIPE / LS TAG 5379 @ THE SOUTHWEST CORNER OF LOT 768 OF THE MAP OF SAN MARIN, UNIT 6, 12 RM 54 BEING AP# 124-042-01

CALIFORNIA COORDINATE SYSTEM ORDER: FIRST N/A SECOND THIRD

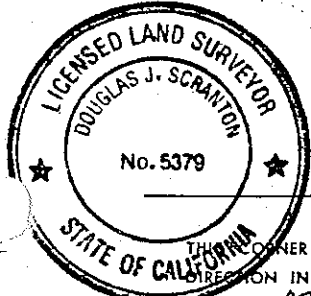
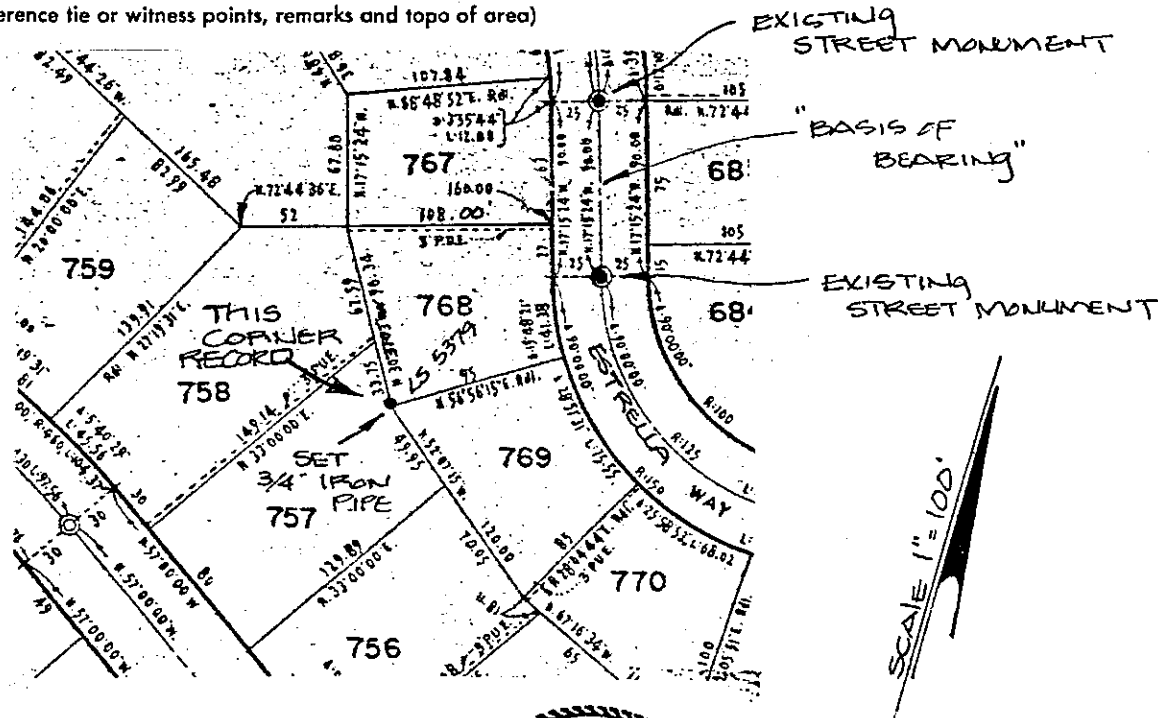
STATIONS USED: NGS (USC & GS) STATE COUNTY OTHER STATION _____ STATION _____

ZONE _____ ELEVATION _____ NORTHINGS (Y) _____ EASTINGS (X) _____

SKETCH: (Include reference tie or witness points, remarks and topo of area)

LOT 768
MAP OF
SAN MARIN
UNIT 6
(12 RM 54)

78 ESTRELLA
WAY
NOVATO, CA



SURVEYOR'S CERTIFICATE
 THIS CORNER RECORD WAS PREPARED BY ME OR UNDER MY DIRECTION IN CONFORMANCE WITH THE LAND SURVEYORS ACT ON APRIL 14th 19 89
 SIGNED: Douglas J. Scranton
 L.S. or R.C.E. No.: LS 5379 EXP. 6/30/92

REGISTERED PROFESSIONAL ENGINEER
 COUNTY SURVEYOR'S CERTIFICATE
 THIS CORNER RECORD WAS RECEIVED 4/24 19 89
 AND EXAMINED AND FILED 4/24 19 89
 Exp. 3-31-92
 TITLE: DES

STATE OF CALIFORNIA
 DOUGLASS COUNTY
 OFFICE OF THE COUNTY ENGINEER
 ROBERT BARRELL
 REGISTERED PROFESSIONAL ENGINEER
 No. 50212
 Exp. 3-31-92

