

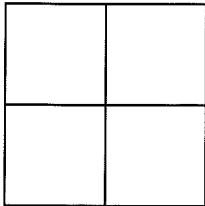
CORNER RECORD

Document Number Near APN 124-020-04

City of NOVATO

County of MARIN, California

Brief Legal Description Pre-construction reference of a brass disk stamped "CALTRANS GPS 35" Found at NWLY corner of Novato Blvd and San Marin Drive as described on 2000 Maps 236 M.C.R.



CORNER TYPE

Government Corner Control
Meander Property
Rancho Other
Date of Survey JUNE 26, 2015

COORDINATES (Optional)

N. _____
E. _____
Zone _____ NAD27 NAD83
NAD83 Epoch _____
Elev. _____
Vert. Datum: NGVD29 NAVD88
Meas. Units: Metric Imperial

Corner - Left as found Found and tagged Established Reestablished Rebuilt

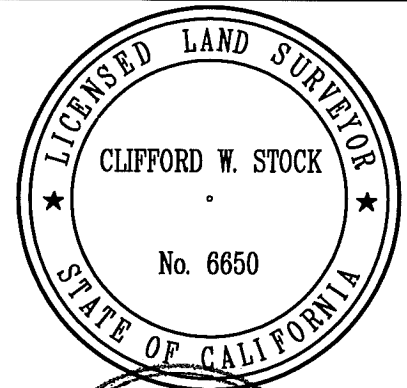
Identification and type of corner found: Evidence used to identify or procedure used to establish or reestablish the corner:
Mag nails were set in the San Marin High School parking lot and used to reference a found 1" brass disk stamped "CALTRANS GPS 35" that was located in the top of a concrete curb. See sheet 2 of 2

A description and the physical condition of the monument as found and as set or reset:
The 1" in diameter brass disk stamped "CALTRANS GPS 35" was found in good condition.

SURVEYOR'S STATEMENT

This Corner Record was prepared by me or under my direction in conformance with the Land Surveyor's Act on DECEMBER 10, 2015

Signed Clifford W. Stock P.L.S. No. 6650



COUNTY SURVEYOR'S STATEMENT

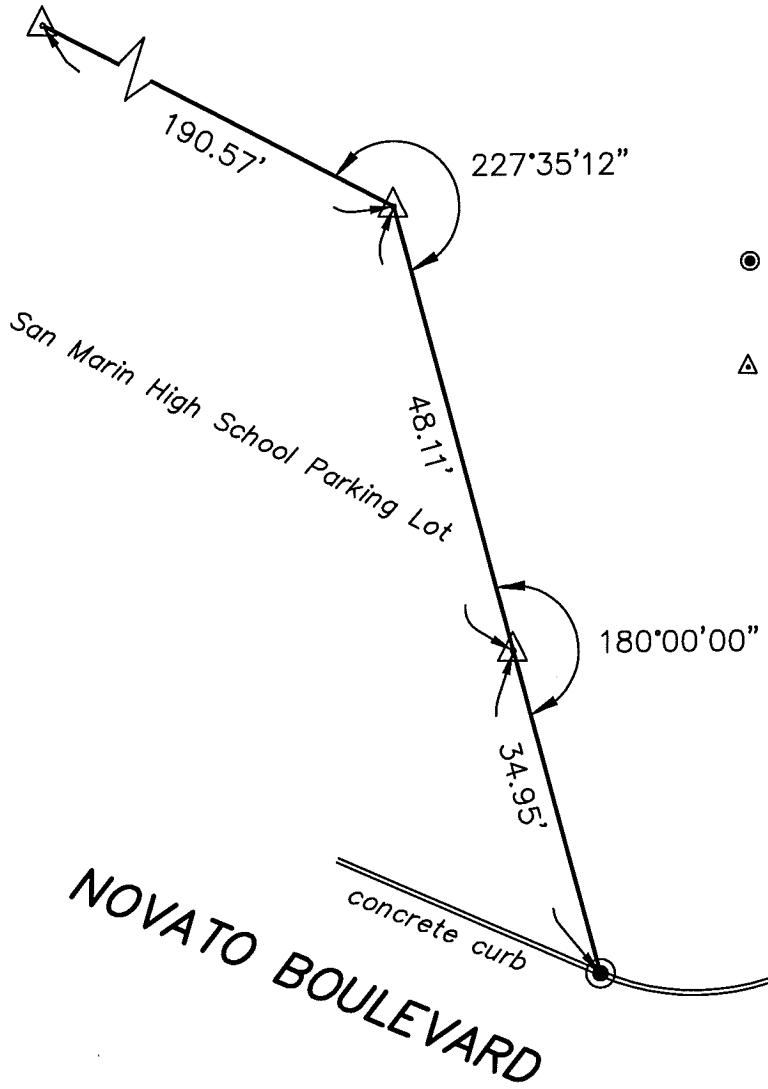
This Corner Record was received DECEMBER 16, 2015 and examined and filed FEBRUARY 9, 2016

Signed Richard G. Simonitch P.L.S. of R.C.E. No. 7821

Title County Surveyor

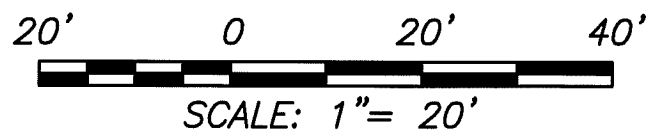


County Surveyor's Comment _____



LEGEND

- Found 1' Brass Disk Stamped "CALTRANS GPS 35" set in the top of of a concrete curb.
- △ Set mag nail in AC Parking Lot



**OBERKAMPER & ASSOCIATES
CIVIL ENGINEERS INC.**
7200 REDWOOD BLVD SUITE 308
NOVATO CA 94945