

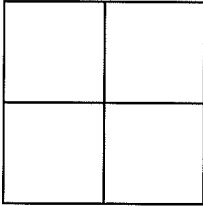
CORNER RECORD

Document Number Near APN 124-020-04

City of NOVATO

County of MARIN, California

Brief Legal Description Re-establishment of a brass disk stamped "CALTRANS GPS 35" found at NWLY corner of Novato Blvd and San Marin Drive as described on 2000 Maps 236 M.C.R.



CORNER TYPE

Government Corner Control
Meander Property
Rancho Other
Date of Survey OCTOBER 2015

COORDINATES (Optional)

N. _____
E. _____
Zone _____ NAD27 NAD83
NAD83Epoch _____
Elev. _____
Vert. Datum: NGVD29 NAVD88
Meas. Units: Metric Imperial

Corner - Left as found Found and tagged Established Reestablished Rebuilt

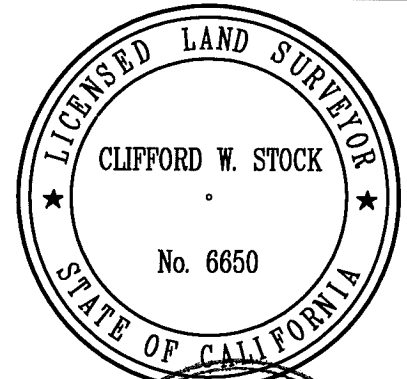
Identification and type of corner found: Evidence used to identify or procedure used to establish or reestablish the corner:
Mag nails that were set to reference the found brass disk prior to it's removal during a construction project were used to re-establish the location of the original CALTRANS disk. A 2" brass disk stamped "CALTRANS GPS 35 RESET LS6650" was set at the same horizontal location as the original disk. The reset disk is 0.20 feet lower than the original 1" disk. See sheet 2 of 2

A description and the physical condition of the monument as found and as set or reset:
The mag nails that were set to reference the 1" CALTRANS disk were recovered in their original condition.
The replacement 2" brass disk was set in the top of a recently constructed concrete curb.

SURVEYOR'S STATEMENT

This Corner Record was prepared by me or under my direction in conformance with the Land Surveyor's Act on DECEMBER 10, 2015

Signed Clifford W. Stock P.L.S. No. 6650



COUNTY SURVEYOR'S STATEMENT

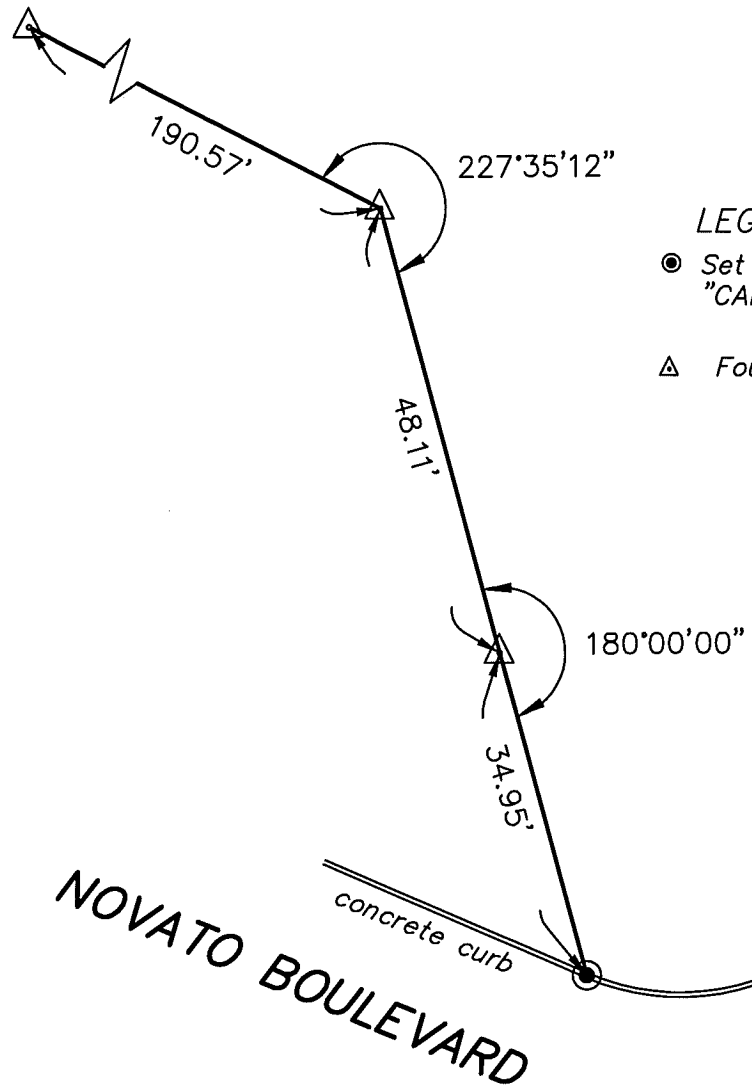
This Corner Record was received DECEMBER 16, 2015 and examined and filed FEBRUARY 9, 2016

Signed Richard G. Simonitch P.L.S. of R.C.E. No. 7821

Title County Surveyor

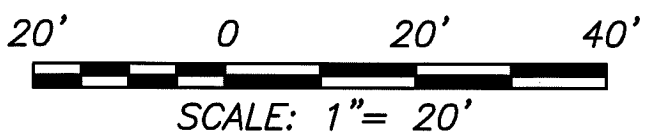


County Surveyor's Comment _____



LEGEND

- Set 2' Brass Disk Stamped "CALTRANS GPS 35 RESET LS6650"
- △ Found mag nail set in AC Parking Lot



SAN MARIN DRIVE

NOVATO BOULEVARD

concrete curb

**OBERKAMPER & ASSOCIATES
CIVIL ENGINEERS INC.**

7200 REDWOOD BLVD SUITE 308
NOVATO CA 94945