

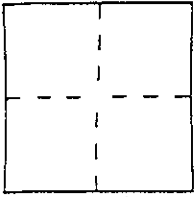
CORNER RECORD

Document Number A.P. 121-300-07

City of NOVATO

County of MARIN, California

Brief Legal Description LOT 7 19RM51



CORNER TYPE

Government Corner Control
Meander Property
Rancho Other
Date of Survey _____

COORDINATES
(Optional)

N. _____
E. _____
Zone _____ Datum _____
Elev. _____

Corner — Left as found Found and tagged Established Reestablished Rebuilt

Identification and type of corner found: Evidence used to identify or procedure used to establish or reestablish the corner:

ESTABLISHED FROM SUBDIVISION STREET
MONUMENTS ON VINEYARD ROAD

A description of the physical condition of the monument as found and as set or reset:

SET 3/4" PIPES AND PLUGS STAMPED P.L.S. 4694

SURVEYOR'S STATEMENT

This Corner Record was prepared by me or under my direction in conformance with the Land Surveyors' Act on OCTOBER 30 2000.

Signed Lawrence P. Doyle L.S. or R.C.E. Number P.L.S. 4694



COUNTY SURVEYOR'S STATEMENT

This Corner Record was received NOVEMBER 3, 2000 and examined and filed NOVEMBER 7 2000.

Signed John M. Woolley Title DEPUTY

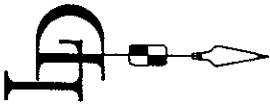
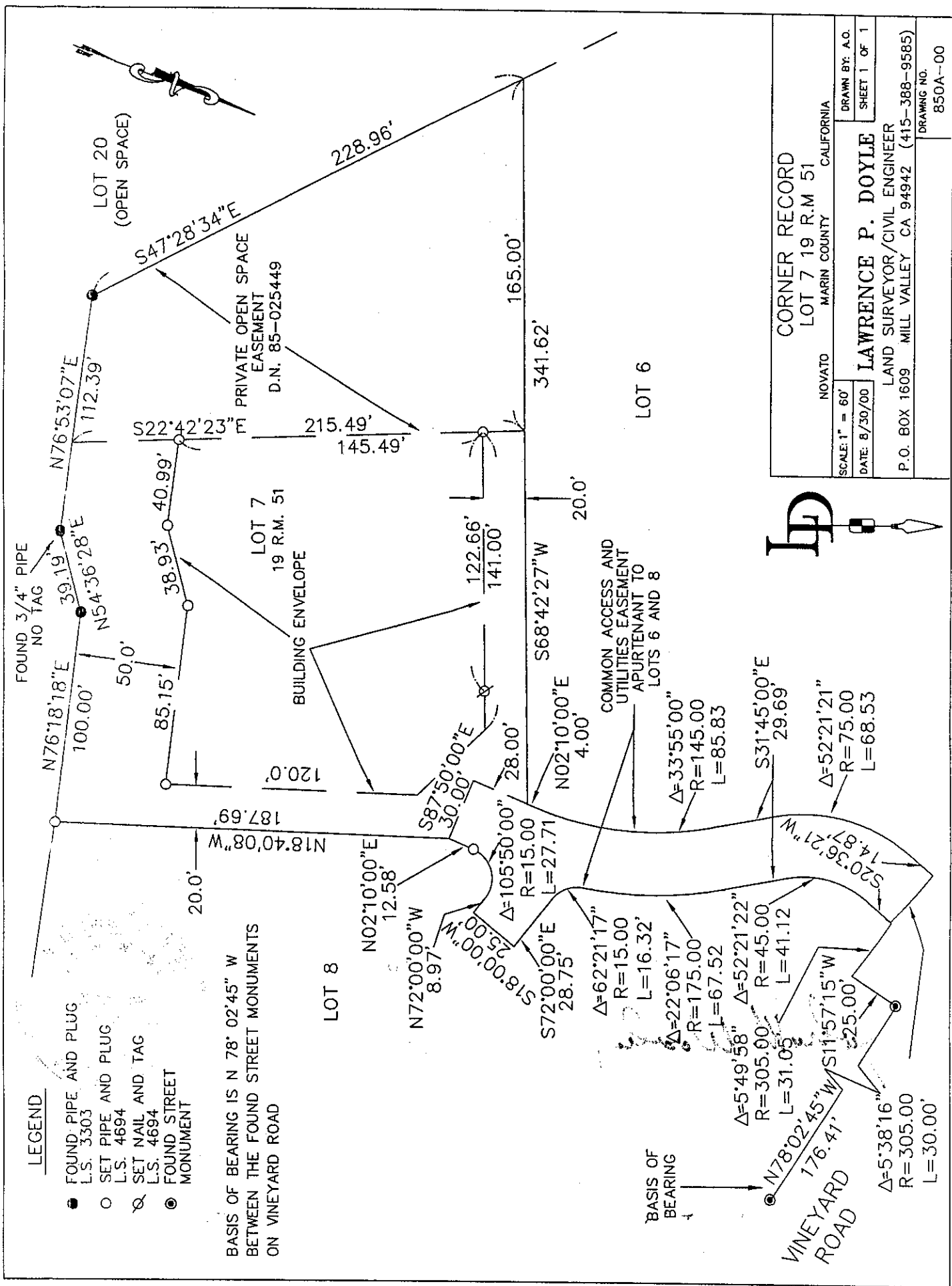


County Surveyor's Comment _____

LEGEND

- FOUND PIPE AND PLUG
L.S. 3303
- SET PIPE AND PLUG
L.S. 4694
- ⊗ SET NAIL AND TAG
L.S. 4694
- ⊙ FOUND STREET
MONUMENT

BASIS OF BEARING IS N 78° 02' 45" W
BETWEEN THE FOUND STREET MONUMENTS
ON VINEYARD ROAD



CORNER RECORD		DRAWN BY: A.O.	
LOT 7 19 R.M 51		SHEET 1 OF 1	
NOVATO	MARIN COUNTY	CALIFORNIA	
LAWRENCE P. DOYLE LAND SURVEYOR/CIVIL ENGINEER P.O. BOX 1609 MILL VALLEY CA 94942 (415-388-9585)			
SCALE: 1" = 60'	DATE: 8/30/00	DRAWING NO. 850A-00	