



JERRICO ASSOCIATES

SUITE 27
77 MARK DRIVE
SAN RAFAEL, CA 94903

7549

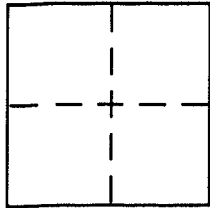
CORNER RECORD

Document Number 121-270-40

City of Nicasio

County of Marin, California

Brief Legal Description Parcel 2, 25 PM 41



CORNER TYPE

Government Corner Control
 Meander Property
 Rancho Other
 Date of Survey April 27, 2005

COORDINATES (Optional)

N. _____
 E. _____
 Zone _____ NAD27 NAD83
 NAD83 Epoch _____
 Elev. _____
 Vert. Datum: NGVD29 NAVD88
 Meas. Units: Metric Imperial

Corner - Left as found Found and tagged Established Reestablished Rebuilt

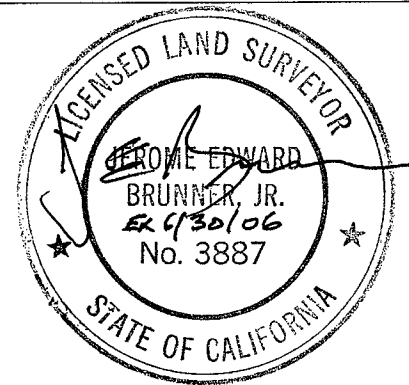
Identification and type of corner found: Evidence used to identify or procedure used to establish or reestablish the corner:
(A) (B) Found rebar and cap LS 3887 as in 25 PM 41

A description of the physical condition of the monument as found and as set or reset:
(C) (D) Set rebar and cap LS 3887

SURVEYOR'S STATEMENT

This Corner Record was prepared by me or under my direction in conformance with the Land Surveyor's Act on April 27, 2005

Signed [Signature] P.L.S or R.C.E. No. LS 3887



COUNTY SURVEYOR'S STATEMENT

This Corner Record was received JULY 7, 2005

and examined and filed AUGUST 9, 2005

Signed [Signature] P.L.S or R.C.E. No. 7128

Title COUNTY SURVEYOR

County Surveyor's Comment _____



NICASIO LAKE

MARIN MUNICIPAL WATER DIST.
FD. REBAR & CAP LS 3887

N 45° 34' 22" E

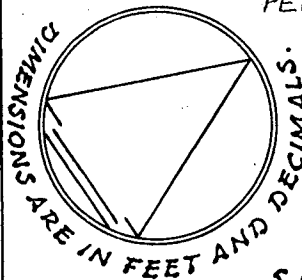
1218.91

N 25° 43' 15" E 710.39

FD. REBAR & CAP LS 3887

S 75° 47' 17" E
490.00

60' ROADWAY & UTILITIES EASEMENT
PER 25 PH 41



SURVEY
PORTION OF
A.P. 121-270-40
2 LAUREL CANYON ROAD
NICASIO, CALIFORNIA.

PARCEL 2
25 PM 41

- LEGEND:-**
SYMBOLS FOR POINTS ALONG P/L.
- oSS = SET COTTON-GIN SPIKE.
 - oFR5 = FOUND #5 REBAR.
 - oSR/c = SET #5 REBAR & CAP.
 - oSR4 = SET #4 REBAR.
 - oSN = SET NAIL ON ASPHALT CURB.
 - oSR5 = SET #5 REBAR.
 - BSBH = SET BEVELED HUB & TACK.
 - BSH = SET HUB & TACK.

15' PRIVATE WATERLINE
& UTILITY EASEMENT.
PER 25 PH 41

WIRE FENCE

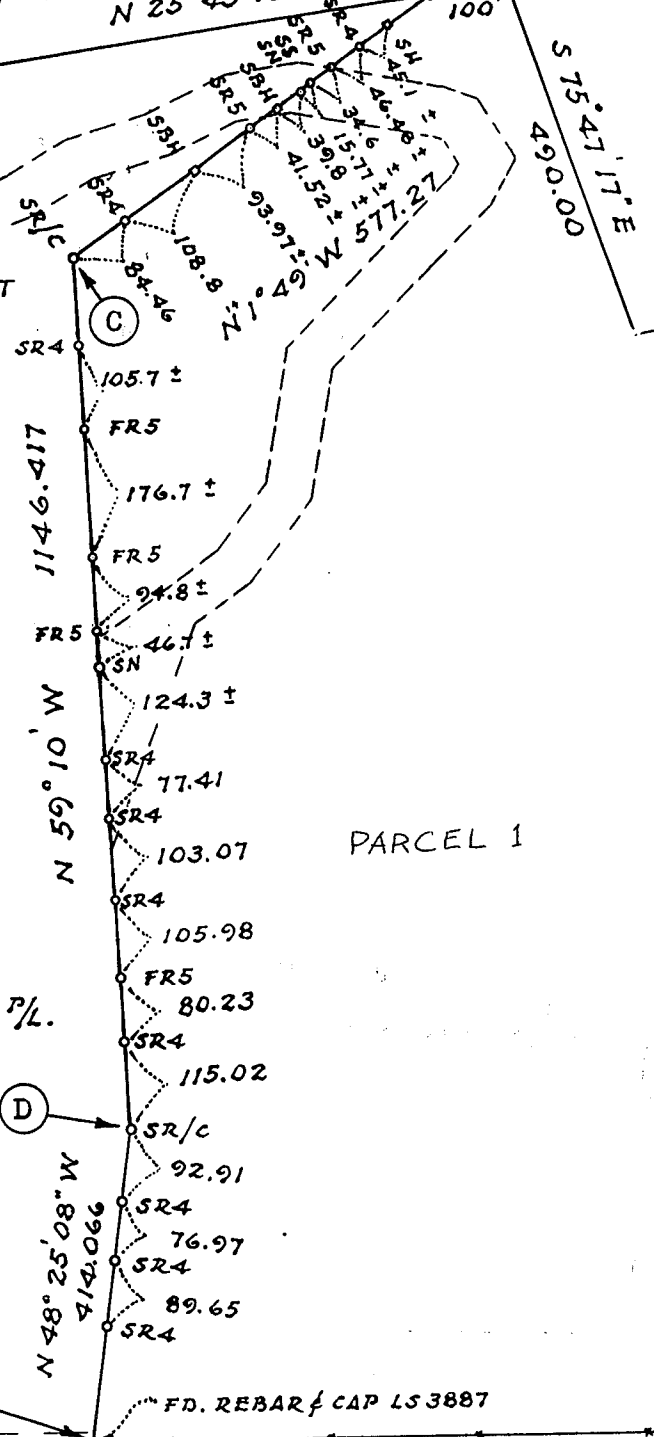
N 33° 56' E

APRIL 2005

JERRICO ASSOCIATES 77 MARK DR., SAN RAFAEL, CA.

CR 7084

S-7549



PARCEL 1