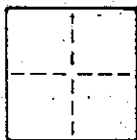


CORNER RECORD

COUNTY OF MARIN T. _____ R. _____ MERIDIAN _____ CALIFORNIA

CORNER TYPE: GOVT. CORNER MEANDER RANCHO CONTROL OTHER

CORNER IDENTIFICATION — DATE OF VISIT _____ 19____



CORNER — LEFT AS FOUND FOUND AND TAGGED REESTABLISHED OBLITERATED CORNER REBUILT

PHYSICAL DESCRIPTION OF CORNER FOUND; EVIDENCE AND METHOD USED TO IDENTIFY OR REESTABLISH

FOUND 1/2" I.P., L.S. 2798 TAG LYING ON SIDE, (PULLED OUT OF GROUND) REESTABLISHED CORNER FROM FOUND L.S. 2798 I.P.'S AT N.E. COR. AND S.W. COR. PARCEL "A", I.O.P.M. 1. A.P. 121-260-35

PHYSICAL DESCRIPTION OF MONUMENTS, REBUILT OR PERPETUATED

SET 1/2" REBAR WITH L.S. 2771 CAP

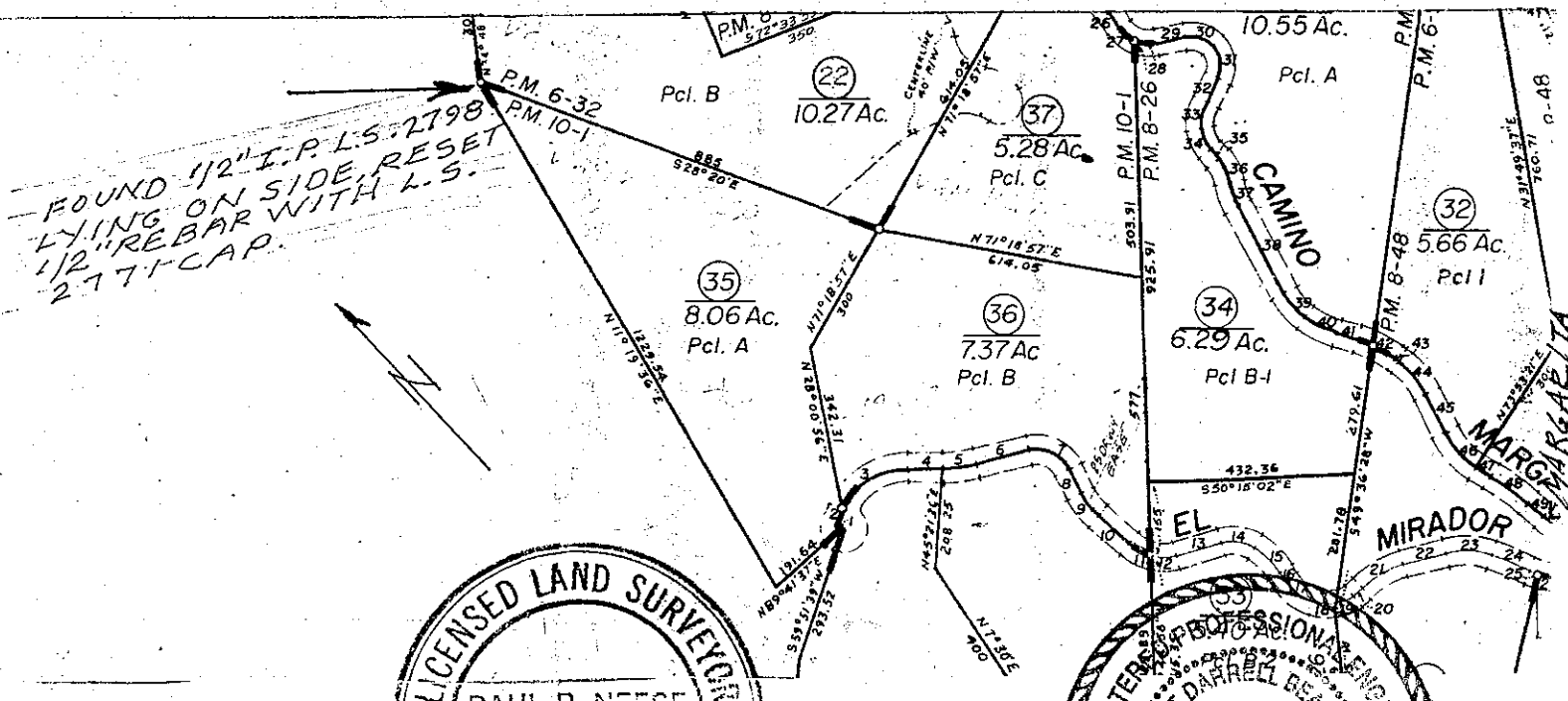
LUCAS VALLEY

CALIFORNIA COORDINATE SYSTEM ORDER: FIRST SECOND THIRD

STATIONS USED: NGS (USC & GS) STATE COUNTY OTHER STATION _____ STATION _____

ZONE _____ ELEVATION _____ NORTHINGS (Y) _____ EASTINGS (X) _____

SKETCH: (Include reference tie or witness points, remarks and topo of area)



LICENSED LAND SURVEYOR
 PAUL B. NEESE
 SURVEYOR'S CERTIFICATE
 NO. 2717

THIS CORNER RECORD WAS PREPARED BY ME OR UNDER MY DIRECTION IN CONFORMANCE WITH THE LAND SURVEYORS ACT ON MAY 29 1992

SIGNED: Paul B. Neese
 L.S. or R.C.E. No.: L.S. 2771

SEAL

REGISTERED PROFESSIONAL ENGINEER
 DARRELL BECKWITH
 COUNTY SURVEYOR'S CERTIFICATE
 STATE OF CALIFORNIA

THE CORNER RECORD WAS RECEIVED AND EXAMINED AND FILED ON SEP 19 1992

BY: Darrell Beckwith
 COUNTY SURVEYOR

DOCUMENT No. _____

STATEMENT ON BACK OF SHEET YES NO