

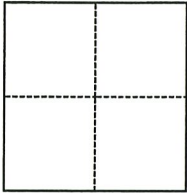
CORNER RECORD

Agency Index DPW # 19-033
 Document Number ADJ 121-240-22

City of NICASIO County of MARIN, California
 Brief Legal Description IRON PIPE SHOWN ON MAP 7 OS 14.

CORNER TYPE

COORDINATES (Optional)



- Government Corner Control
 Meander Property
 Rancho Other

Date of Survey MARCH 15, 2019

N. _____ E. _____

Elevation _____

Units Metric U.S. Survey Foot

Horizontal Datum _____

Zone _____ Epoch Date _____

Vertical Datum _____

Complies with Public Resources Code §§8801-8819

Complies with Public Resources Code §§8890-8902

PLS Act Ref.: 8765(d) 8771 8773 Other:

Corner/Monument: Left as found Established Rebuilt Pre-Construction

Found and tagged Reestablished Referenced Post-Construction

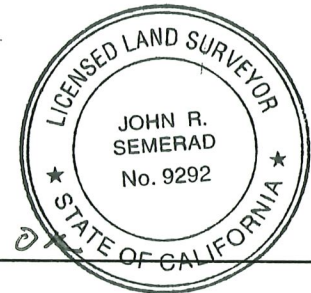
Narrative of corner identified and monument as found, set, reset, replaced, or removed:

See sheet #2 for description(s):

FOUND IRON PIPE SHOWN ON MAP 7 OS 14 NEAR LOT 2 AS SHOWN ON MAP 2 PM 57. SET FOUR REFERENCE TIES; RE-ESTABLISHED WITH COUNTY OF MARIN WELL MONUMENT PER UCS DWG #300. (SEE ATTACHED SKETCH) NO DETERMINATION WAS MADE AS TO THE VALIDITY OF THE MONUMENT SHOWN HEREON OR ITS RELATION TO PROPERTY LINES IN THE AREA.

SURVEYOR'S STATEMENT

This Corner Record was prepared by me or under my direction in conformance with the Professional Land Surveyors' Act on 06/20/22
 Signed [Signature] P.L.S. or R.C.E. No. 9292



COUNTY SURVEYOR'S STATEMENT

This Corner Record was received MAY 9, 2019
 and examined and filed 6/20/22
 Signed T.W. Park P.L.S. or R.C.E. No. 8176
 Title County Surveyor



County Surveyor's Comment

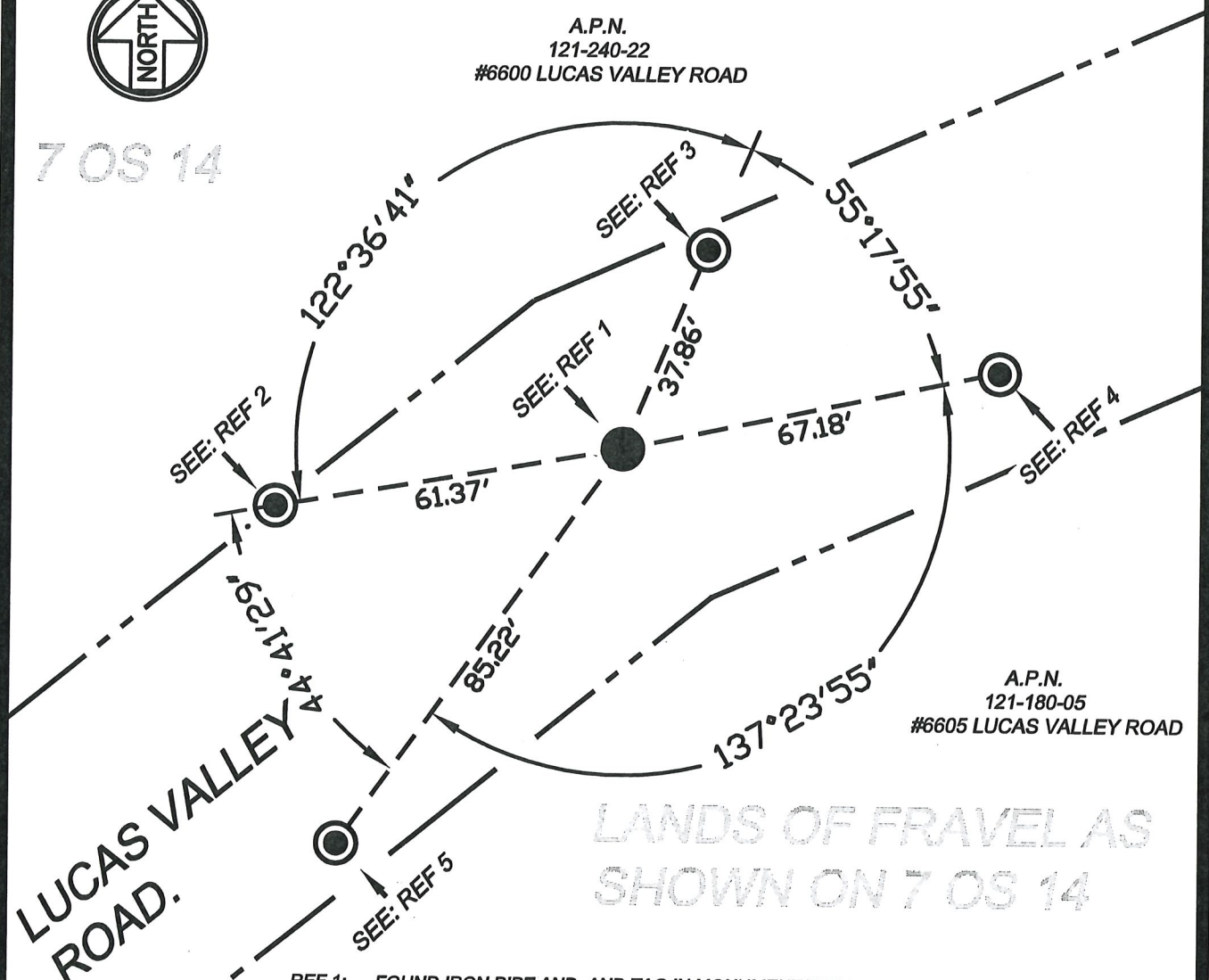
LOT 2
2 PM 57

LANDS OF SOARES AS
SHOWN ON 7 OS 14



A.P.N.
121-240-22
#6600 LUCAS VALLEY ROAD

7 OS 14



LANDS OF FRAVEL AS
SHOWN ON 7 OS 14

REF 1: FOUND IRON PIPE AND TAG IN MONUMENT WELL STAMPED R.E. NO.8424 PER 7 OS 14 REPLACED WITH STANDARD COUNTY MONUMENT PER UNIFORM CONSTRUCTION STANDARDS DRAWING #300.

REF 2: SET NAIL AND WASHER STAMPED "MARIN COUNTY SURVEYOR" IN TREE STUMP.

REF 3: SET NAIL AND WASHER STAMPED "MARIN COUNTY SURVEYOR" IN TREE STUMP.

REF 4: SET NAIL AND WASHER STAMPED "MARIN COUNTY SURVEYOR" IN UTILITY POLE.

REF 5: SET HUB AND WASHER STAMPED "MARIN COUNTY SURVEYOR" ON SHOULDER OF ROAD.

COUNTY OF MARIN
DEPARTMENT OF PUBLIC WORKS
SURVEY SECTION

SCALE: 1"=30'

JOB No. 2018-026
CORNER RECORD